



# KT-WPLED100-M2-8XX-VDIM

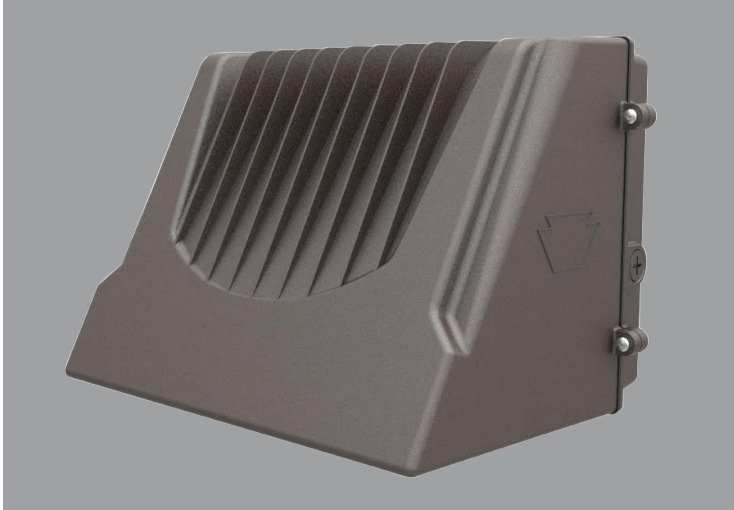
## ARCHITECTURAL 100W FULL-CUTOFF LED WALL PACK

**DESCRIPTION**

Architectural 100W Full-Cutoff LED Wall Pack | 120–277V Input | 4000–5000K | Medium-Size Bronze Housing | Wide Optic Lens

**APPLICATION**

Building Mount for exterior illumination (perimeters, pathways, loading docks, and other general security lighting requirements)



**PRODUCT FEATURES**

- Architectural full-cutoff design improves the appearance of building exteriors and optimizes functional light distribution
- Heavy-duty, die-cast aluminum housing features modern aesthetics while retaining (5) available 1/2" threaded conduit hubs: (1) on back and (1) on all four sides
- Powered by Keystone 0–10V dimming LED drivers
- Dark Sky friendly performance, eliminates undesirable sky glow and glare
- Features one translucent 3/4" threaded plug with anti-yellowing agent for use with photocell accessory KT-WPLED-PS-UV-KO
- Precision-crafted optical lens provides wide distribution pattern ideal for increased fixture spacing and uniformity
- Covers footprint of mid-size HID wallpacks
- Ambient operating temperature: –20°C/–4°F to 45°C/113°F
- UL listed for wet locations, IP65
- 0–10V dimming, 10% min
- Power Factor: >0.95
- THD: <20%
- LED chip lifetime: L70 >100,000 hrs @ 25°C/77°F ambient fixture temp
- Meets FCC Part 15, Part B, Class A standards for conducted and radiated emissions

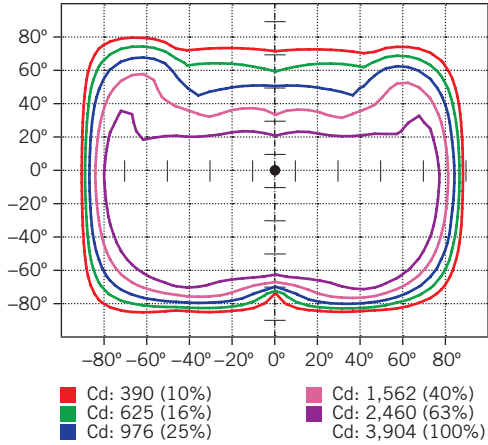
**ELECTRICAL SPECIFICATIONS**

Catalog Number	Wattage	Lumens	Lumens Below 90°	Dimming	CCT	Efficacy	CRI	Housing Color	Input Voltage	Rated Life	Legacy Equivalent
KT-WPLED100-M2-840-VDIM	100W	12500 lm	12410 lm	0–10V	4000K	125 lm/W	>80	Bronze	120–277V	50,000 hrs	400W MH
KT-WPLED100-M2-850-VDIM		13000 lm	12900 lm		5000K	130 lm/W					

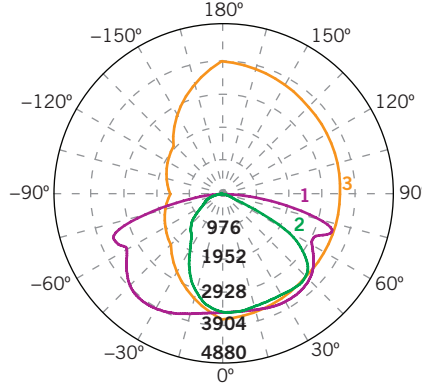
**KT-WPLED100-M2-8XX-VDIM**  
ARCHITECTURAL 100W FULL-CUTOFF LED WALL PACK

**PHOTOMETRIC SPECIFICATIONS**

**ISOCANDELA PLOT**



**LUMINOUS INTENSITY DISTRIBUTION**



Average diffuse angle (50%): **124.7°**  
**1 Violet** C0-C180  
**2 Green** C90-C270  
**3 Orange** G36  
 Unit: cd

**FLUX DISTRIBUTION**

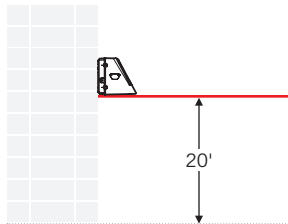
Zone	Lumens	% Luminaire
<b>Forward Light</b>	8,446 lm	64.1%
0°-30°	1,534 lm	11.6%
30°-60°	4,104 lm	31.1%
60°-80°	2,553 lm	19.4%
80°-90°	255 lm	1.9%
<b>Back Light</b>	4,633 lm	35.1%
0°-30°	1,263 lm	9.6%
30°-60°	2,156 lm	16.4%
60°-80°	1,094 lm	8.3%
80°-90°	119 lm	0.9%
<b>Up Light</b>	102 lm	0.8%
90°-100°	13 lm	0.1%
100°-180°	89 lm	0.7%

BUG* Rating	
<b>Asymmetrical Luminaire Types</b>	
Type I, II, III, IV	B3 U5 G3
<b>Quadrilateral Symmetrical Luminaire Types</b>	
Type V, Area Light	B3 U5 G2

\* Backlight, Uplight, Glare

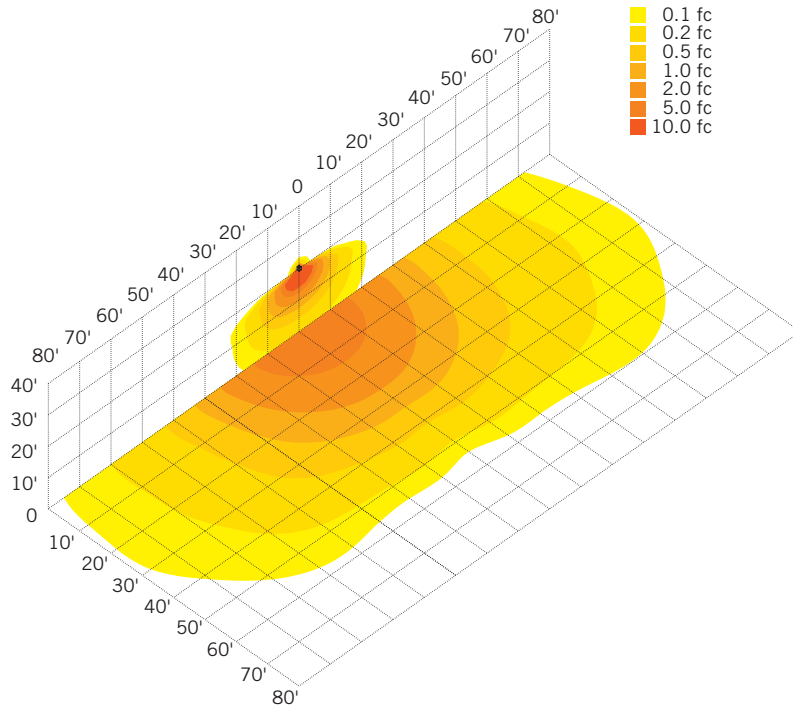
**MOUNTING**

Side view



**LIGHT DISTRIBUTION PATTERN**

Isometric view from above; Luminaire mounted at 20'

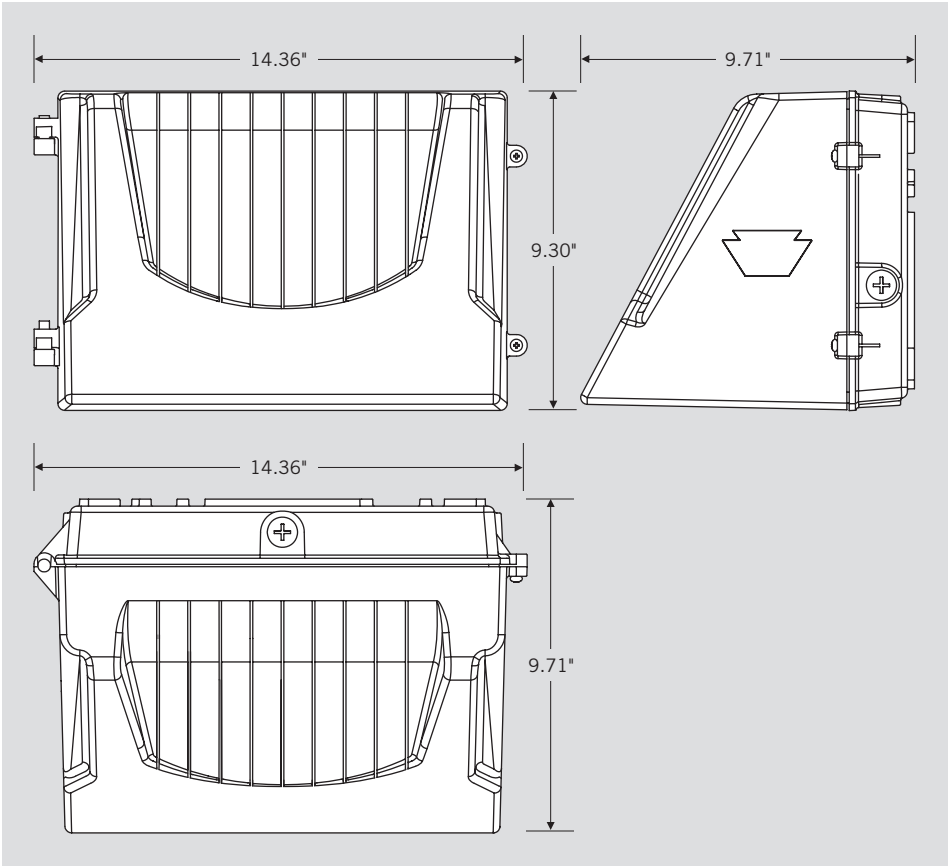




# KT-WPLED100-M2-8XX-VDIM

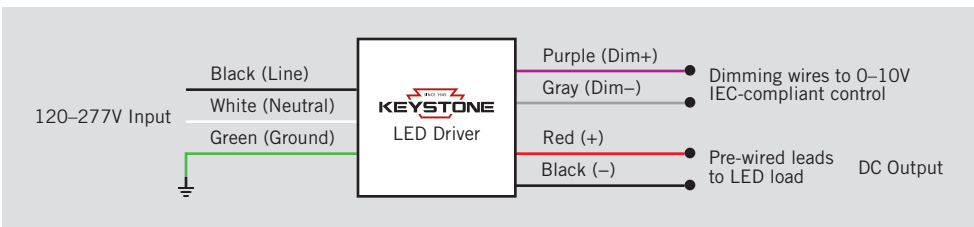
## ARCHITECTURAL 100W FULL-CUTOFF LED WALL PACK

### PHYSICAL SPECIFICATIONS



### GENERAL SETUP INSTRUCTIONS

#### GENERAL WIRING DIAGRAM



**Caution:** Before installing, make certain that AC power to the fixture is off.

**Caution:** The electrical rating of this product is 120-277V. Installer must confirm that there is 120-277V at the fixture before installation.



# KT-WPLED100-M2-8XX-VDIM

## ARCHITECTURAL 100W FULL-CUTOFF LED WALL PACK

**ACCESSORIES (SOLD SEPARATELY)**

Catalog Number	Description
KTSP-10KV-C	Wallpack 10kV Surge Protector, Compact Design
KT-WPLED-PS-UV-KO	Keystone Wall Pack Button Photocell

**ORDERING INFORMATION**

CATALOG NUMBER	PACK QTY.	EASY CODE	UPC
KT-WPLED100-M2-840-VDIM	1	JFC-71	843654129099
KT-WPLED100-M2-850-VDIM	1	EXV-37	843654129105

**CATALOG NUMBER BREAKDOWN**

# KT-WPLED100-M2-8XX-VDIM /XXX

- 1
- 2
- 3
- 4
- 5
- 6
- 7
- 8
- 9
- 10

- 1 Keystone Technologies
- 2 Fixture Type
- 3 LED Lamp
- 4 Max Wattage
- 5 Size
- 6 Style
- 7 CRI
- 8 Color
- 9 Dimming
- 10 Sensor Options

**2 Fixture Type**

F	Flood
WP	Wallpack

**5 Size**

S	Small
M	Medium
L	Large

**6 Style**

1	Non-Cutoff
2	Full-Cutoff

**7 CRI**

8	>80
9	>90

**8 Color**

40	4000K
50	5000K

**9 Dimming**

VDIM	0-10V
------	-------

**10 Sensor Options**

/XXX	No option
/PIR	Occupancy sensor included



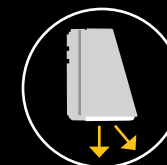
# XFIT

## FULL CUT OFF WALL PACK FIXTURES

Optimize light distribution and improve the appearance of building exteriors.

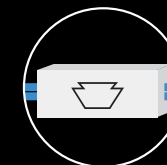


**IMPROVED APPEARANCE WITH ARCHITECTURAL FULL CUTOFF DESIGN**



**OPTIMIZE LIGHT DISTRIBUTION**

MORE LIGHT DIRECTED DOWNWARD AND OUTWARD WHERE IT'S NEEDED



**BUILT-IN 120-277V KEYSTONE LED DRIVER**

PROVIDES 0-10V DIMMING & AMPLE SURGE PROTECTION FOR INCREASED VERSATILITY AND RELIABILITY



100,000 HOUR  
LED LIFETIME

IP65  
RATED

5 YEAR  
WARRANTY



# XFIT FULL CUTOFF WALL PACKS

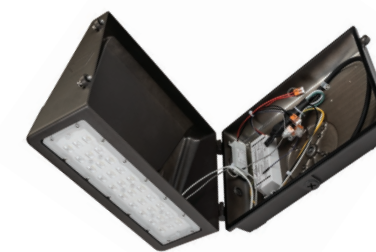
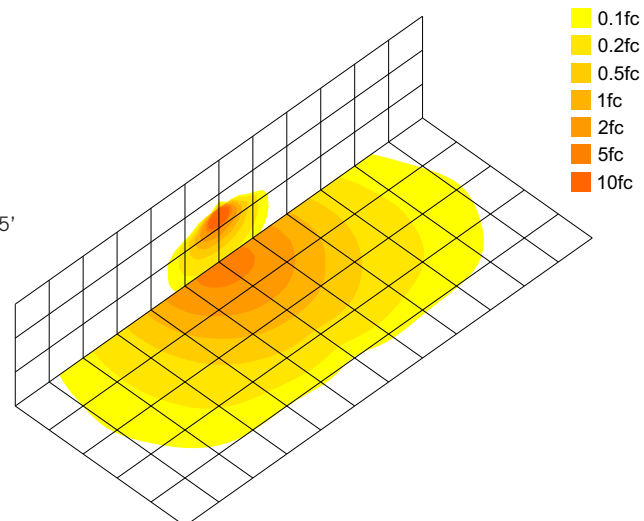


40W FULL CUTOFF

## FEATURES AND BENEFITS

- Eliminates undesirable sky glow and glare with dark sky friendly performance
- Increases control and energy efficiency with photocell accessory (available separately)
- Provides wide light distribution with advanced optical lens technology, ideal for increased fixture spacing and uniformity
- Covers the existing footprint of mid-size legacy HID fixtures with an updated design, while hiding any unsightly marks and fading
- Ensures reliable operation with a Keystone LED dimming driver
- Protected from the elements with an IP65 rating
- Adds additional energy savings with 0-10V dimming
- Features a heavy duty die cast aluminum housing in traditional bronze color

40W Full Cutoff WP:  
Building exterior mounted at 15'



SIDE OPENING FOR EASY ACCESS

