



KT-FLED60-R1A-UNV-8CSB-VDIM

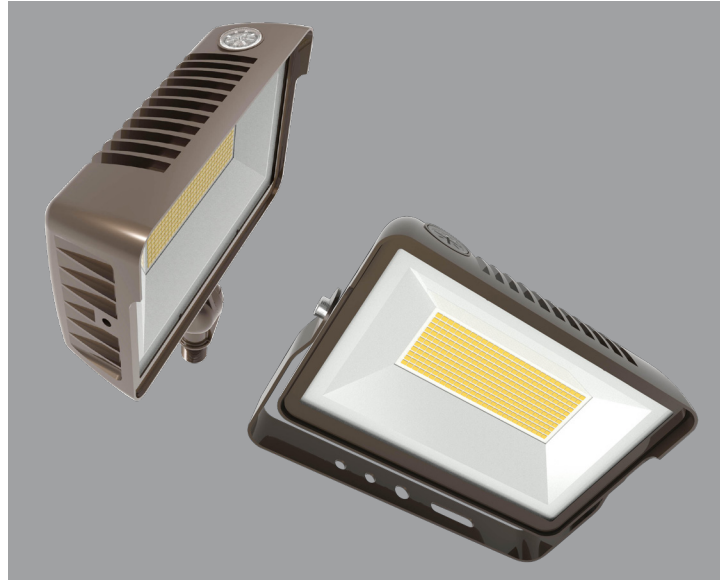
COMPACT 60W GENERAL-PURPOSE LED FLOOD LIGHT

DESCRIPTION

Compact 60W General-Purpose LED Flood Light | 120–277V Input | 3000–5000K | Bronze Housing | Multiple Mounting Options

APPLICATION

Building Mount or Ground Mount for outdoor illumination (landscapes, display signage, loading docks, building façades, pathways, parking areas, and other general site lighting requirements)



PRODUCT FEATURES

- Uniform, wide flood design (NEMA 7h x 7w distribution pattern)
- Heavy-duty, die cast aluminum housing featuring built-in glare visor and tempered glass lens
- Powered by Keystone 0–10V dimming LED drivers
- Keystone Color Select Technology: Adjustable CCT (3000K, 4000K, or 5000K)
- Built-in dusk-to-dawn photocell behind translucent 3/4” threaded plug with anti-yellowing agent
- Heavy-duty 1/2” knuckle mount with 90° adjustment and yoke mount options included
- Ambient operating temperature: –20°C/–4°F to 45°C/113°F
- UL listed for wet locations, IP65
- 0–10V dimming, 10% min
- Power Factor: >0.95
- THD: <20%
- LED chip lifetime: L70 >100,000 hrs @ 25°C/77°F ambient fixture temp
- Meets FCC Part 15, Part B, Class A standards for conducted and radiated emissions

ELECTRICAL SPECIFICATIONS

Catalog Number	Wattage	Lumens	Dimming	CCT*	Efficacy	CRI	Housing Color	Mounting	Input Voltage	Rated Life	Legacy Equivalent
KT-FLED60-R1A-UNV-8CSB-VDIM	60W	7320 lm	0–10V	3000K	122 lm/W	>80	Bronze	Universal: 1/2” Knuckle or yoke	120–277V	50,000 hrs	250W MH
		8580 lm		4000K	143 lm/W						
		8040 lm		5000K	134 lm/W						

* Color Uniformity: CCT (Correlated Color Temperature) range as per guidelines outlined in ANSI C78.377-2017

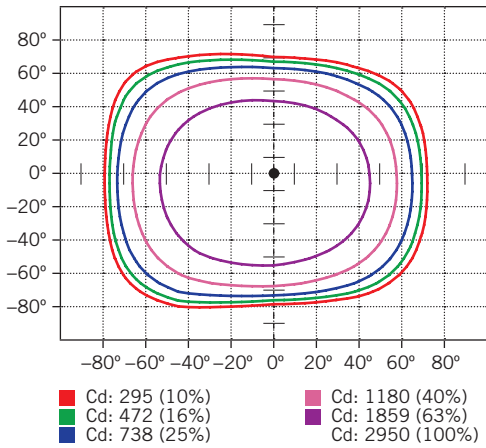


KT-FLED60-R1A-UNV-8CSB-VDIM

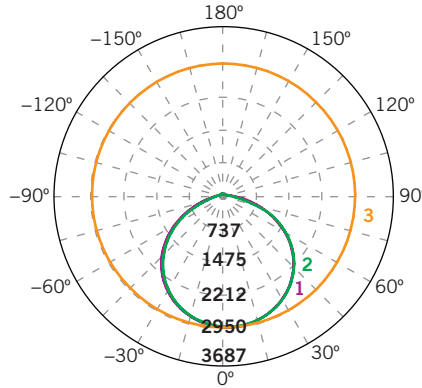
COMPACT 60W GENERAL-PURPOSE LED FLOOD LIGHT

PHOTOMETRIC SPECIFICATIONS

ISOCANDELA PLOT



LUMINOUS INTENSITY DISTRIBUTION



Average diffuse angle (50%): **114.9°**

- 1 Violet C0-C180
 - 2 Green C90-C270
 - 3 Orange G2
- Unit: cd

FLUX DISTRIBUTION

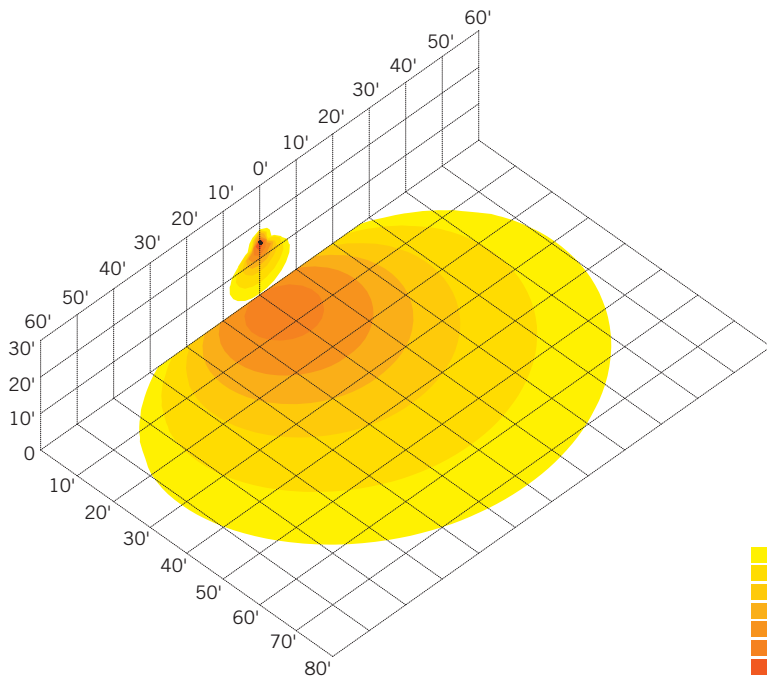
Zone	Lumens	% Luminaire
Forward Light	4,171 lm	50.8%
0°-30°	1,159 lm	14.1%
30°-60°	2,300 lm	28.0%
60°-80°	699 lm	8.5%
80°-90°	14 lm	0.2%
Back Light	3,981 lm	48.4%
0°-30°	1,146 lm	13.9%
30°-60°	2,200 lm	26.8%
60°-80°	624 lm	7.6%
80°-90°	11 lm	0.1%
Up Light	65 lm	0.8%
90°-100°	3 lm	0.0%
100°-180°	61 lm	0.7%

BUG* Rating	
Asymmetrical Luminaire Types	
Type I, II, III, IV	B3 U2 G2
Quadrilateral Symmetrical Luminaire Types	
Type V, Area Light	B3 U2 G1

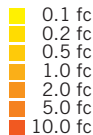
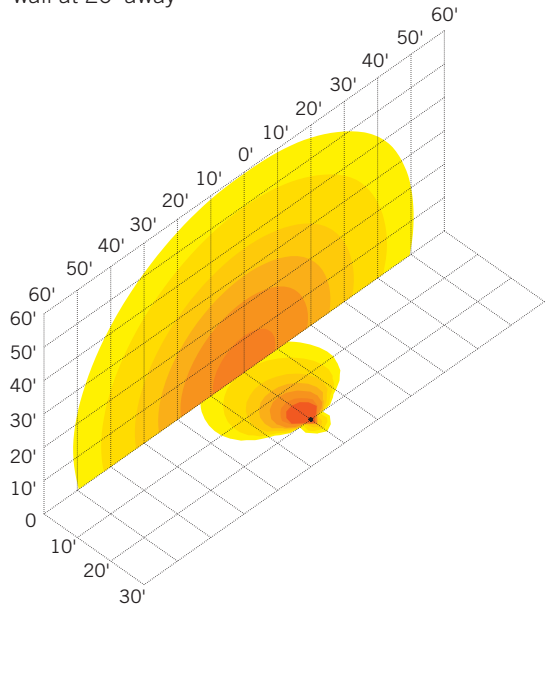
* Backlight, Uplight, Glare

LIGHT DISTRIBUTION PATTERNS (Isometric view from above)

Building exterior mounted at 15',
30° below horizontal



Ground mounted at 6' above ground,
10° above horizontal, shining towards building exterior
wall at 20' away

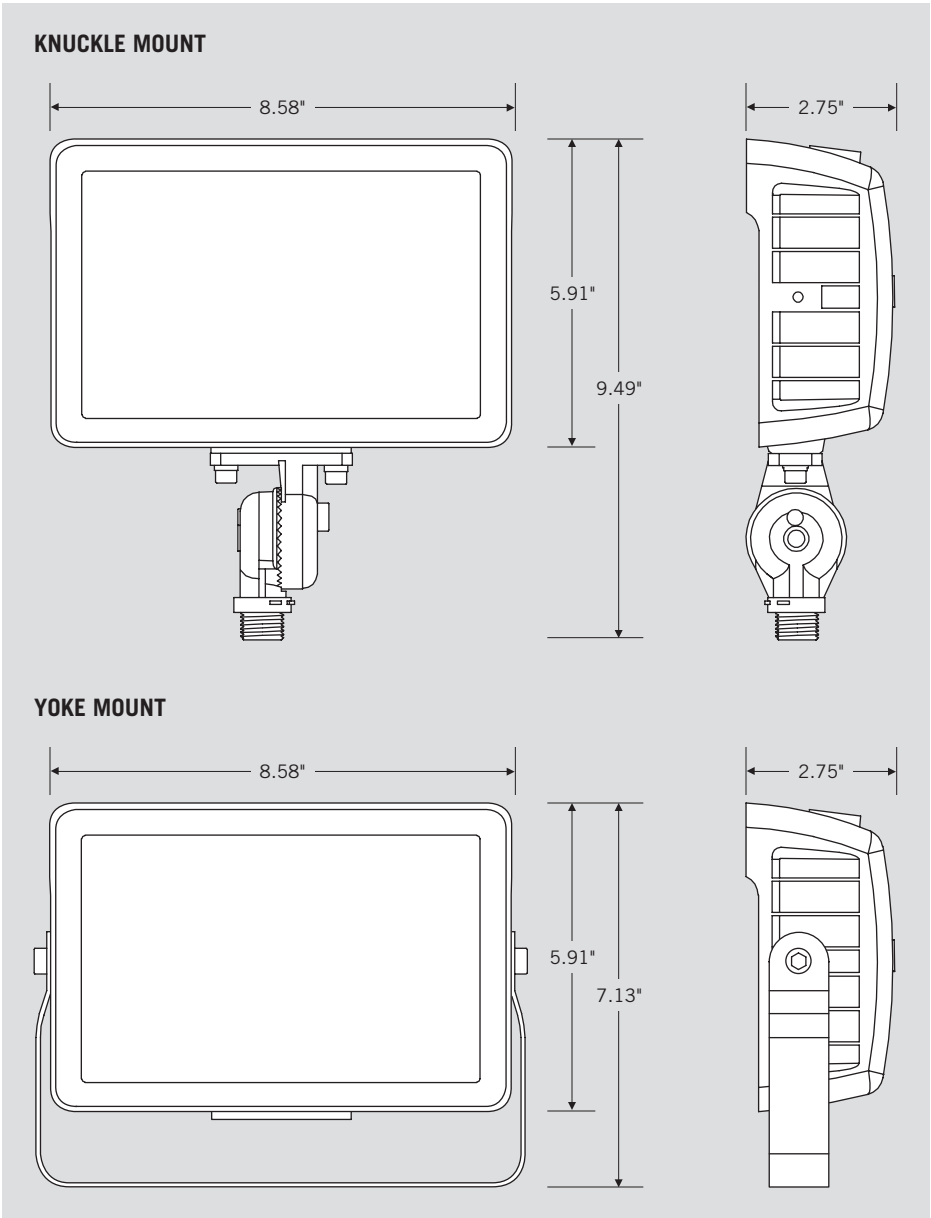




KT-FLED60-R1A-UNV-8CSB-VDIM

COMPACT 60W GENERAL-PURPOSE LED FLOOD LIGHT

PHYSICAL SPECIFICATIONS



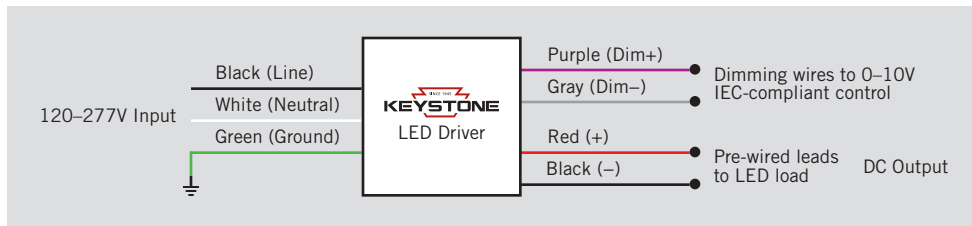


XFIT | FLOOD LIGHT FIXTURES

KT-FLED60-R1A-UNV-8CSB-VDIM COMPACT 60W GENERAL-PURPOSE LED FLOOD LIGHT

GENERAL SETUP INSTRUCTIONS

GENERAL WIRING DIAGRAM



Caution: Before installing, make certain that AC power to the fixture is off.

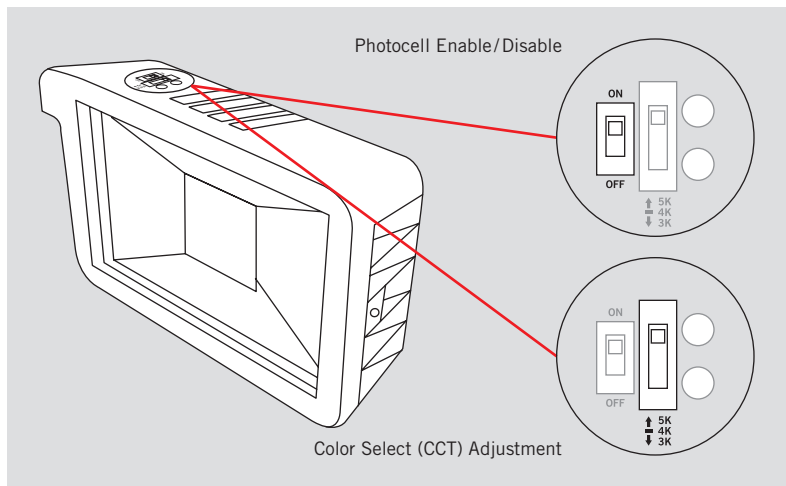
Caution: The electrical rating of this product is 120–277V. Installer must confirm that there is 120–277V at the fixture before installation.

PHOTOCELL ENABLE/DISABLE

This fixture is equipped with a dusk-to-dawn photocell behind the translucent knock-out (KO) cover. Adjust the dip switch to enable (ON) or disable (OFF) the photocell function (see illustrations to the right). Fixture comes preset with photocell enabled unless otherwise noted.

COLOR SELECT (CCT) ADJUSTMENT

This fixture is equipped with Color Select technology. There is an adjustable dip switch behind the translucent knock-out (KO) cover to change CCT between 5000K, 4000K, and 3000K (see illustrations to the right). Fixture comes preset at 5000K unless otherwise noted.



ACCESSORIES (SOLD SEPARATELY)

Catalog Number	Description
KT-FLED-SM-1-KIT	Flood Light Wall Mount Kit
KT-FLED-RC-4-W	4" Round Flood Light Junction Box Cover, White
KT-FLED-RC-4	4" Round Flood Light Junction Box Cover, Bronze



XFIT

FLOOD LIGHT FIXTURES

KT-FLED60-R1A-UNV-8CSB-VDIM

COMPACT 60W GENERAL-PURPOSE LED FLOOD LIGHT

ORDERING INFORMATION

CATALOG NUMBER	PACK QTY.	EASY CODE	UPC
KT-FLED60-R1A-UNV-8CSB-VDIM	1	BVB-78	843654128986

CATALOG NUMBER BREAKDOWN

KT-FLED60-R1A-UNV-8CSB-VDIM /XXX

1	2	3	4	5	6	7	8	9	10	11	12	13	14
1 Keystone Technologies	2 Fixture Type	3 LED Lamp	4 Max Wattage	5 Shape	6 Style	7 Distribution	8 Mounting	9 CRI	10 Color	11 Color Select Designation	12 Dimming	13 Housing Color	14 Sensor Options
	F Flood			R Rectangular	1 Non-Cutoff	A Wide (7 × 7)	UNV Universal	8 >80	40 4000K	A 3500K, 4000K, 5000K	VDIM 0-10V	B Bronze	/XXX No option
	WP Wallpack			C Circular	2 Full-Cutoff	B Narrow	SF Slip Fitter	9 >90	50 5000K	B 3000K, 4000K, 5000K		W White	/PIR Occupancy sensor included
				KNL 1/2" Knuckle		C TBD Very Narrow			CS Color Select	D TBD			



XFIT | FLOOD LIGHT FIXTURES

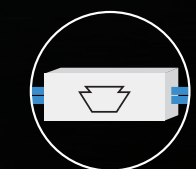
Powerful, efficient LED lighting with incredible versatility.



COLOR SELECT TECHNOLOGY
ADJUSTABLE: 3000K - 4000K - 5000K



BUILT-IN DUSK TO DAWN PHOTOCELL
OPERATES ONLY WHEN DARKNESS IS DETECTED FOR INCREASED CONTROL AND ENERGY EFFICIENCY



BUILT-IN 120-277V KEYSTONE LED DRIVER
PROVIDES 0-10V DIMMING & AMPLE SURGE PROTECTION FOR INCREASED VERSATILITY AND RELIABILITY



CONSOLIDATE SKUS WITH INTERCHANGEABLE MOUNTING OPTIONS INCLUDED
YOKE & KNUCKLE MOUNT INCLUDED FOR 15W, 35W, & 60W; SLIPFITTER & TRUNNION MOUNT INCLUDED FOR 75W & 100W ENSURES UNIVERSAL FIT



Two mounting options included with every fixture

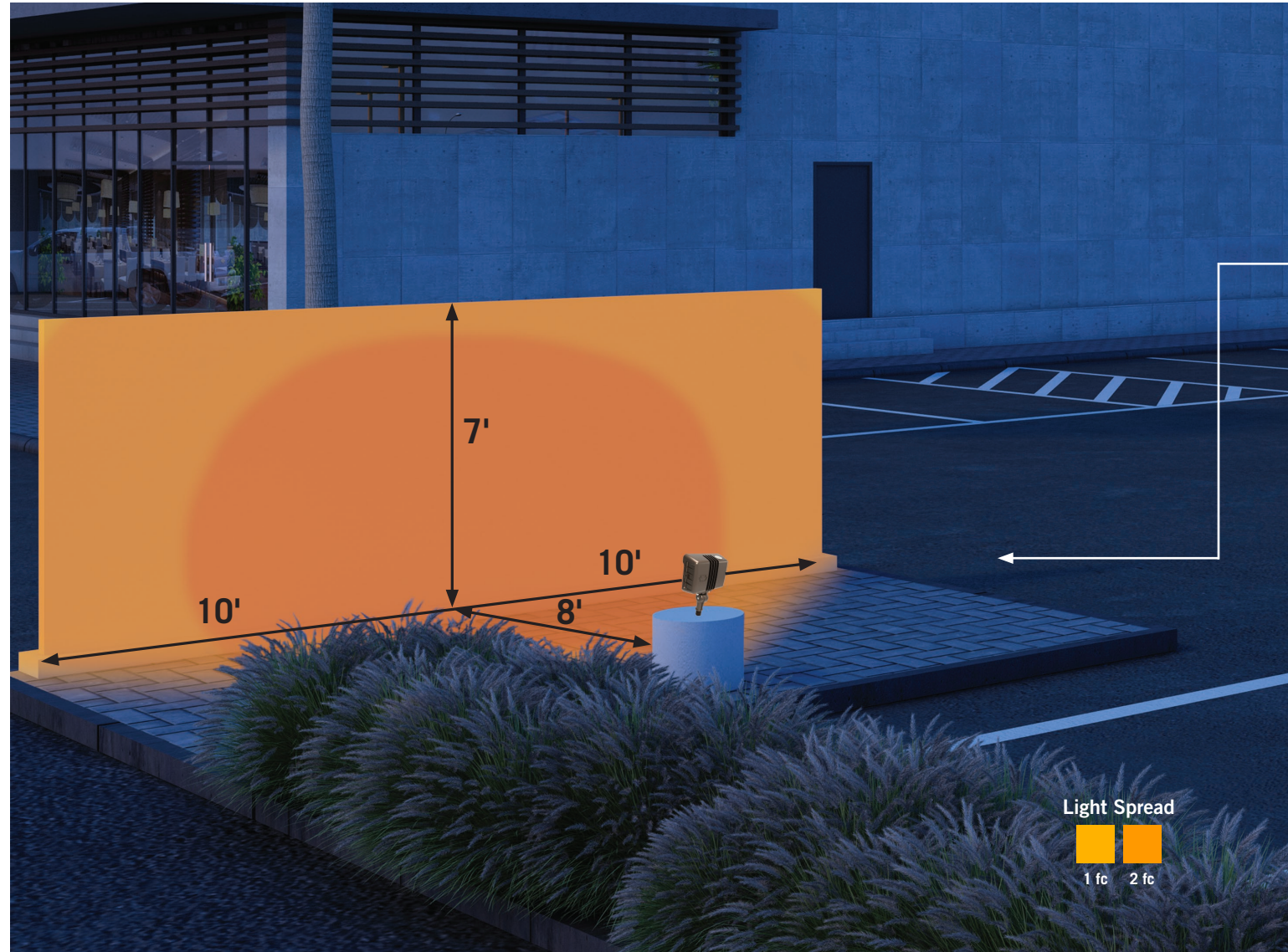


100,000 HOUR LED LIFETIME

IP65 RATED

5 YEAR WARRANTY

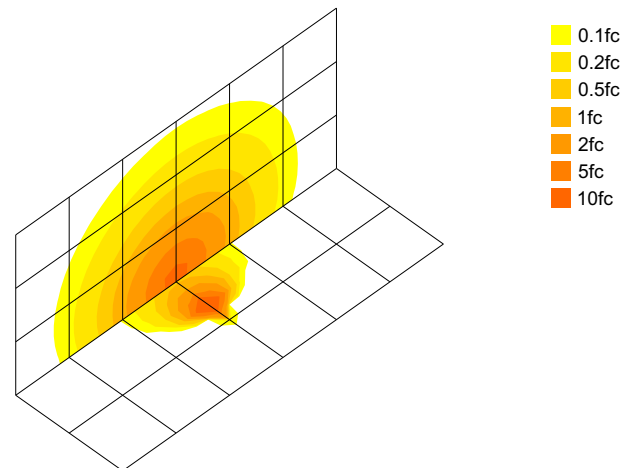
XFIT FLOOD LIGHT FIXTURES



FEATURES AND BENEFITS

- Ensures easy installation with included mounting hardware
- Adds energy savings with 0-10V dimming
- Designed with two dip switches (for photocell and color temperature adjustment) protected by a translucent plug
- Reduces SKUs with selectable color temperature and two mounting brackets
- 7'x7' NEMA beam spread
- Ensures proper heat sinking with sturdy and aesthetic design
- Protected from the elements and sprinkler systems with an IP65 rating
- Available in two housing options: Bronze & White. White available in 15W, 35W & 60W

15W Flood Light:
Ground Mount at 6" above
horizontal; 8' from wall



YOKE MOUNT, SHOWN
IN BRONZE



SHOWN IN WHITE



PROTECTIVE TRANSLUCENT
PLUG PROVIDES EASY ACCESS
TO PHOTOCELL AND COLOR
TEMPERATURE DIP SWITCHES