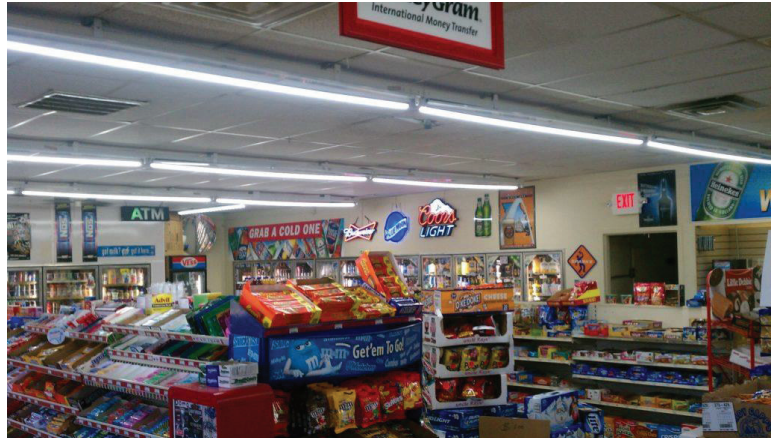


# 8 FOOT T8 LED TUBE (BALLAST BYPASS)

## Spec Sheet



### Applications:

Supermarket / subway / office / shopping mall / hotel / hospital / school / showrooms ...

## GENERAL DESCRIPTION

T8 LED 8FT Tube Lights offer the highest standard in commercial lighting. These frosted LED tube lights are compatible with T8, T10 and T12 fixtures and come with free LED non-shunted tombstones, making it easy to retrofit and direct wire the tubes with a ballast bypass installation.

## FEATURES

- Aluminum housing
- 8 FT tube: shorter installation time
- High energy efficiency: save more than 60% energy versus T8 fluorescent lamps
- RoHS Compliant - Mercury Free: eliminate disposal problems
- Instant-on light/ No Flicker
- High uniformity of light

## APPLICATIONS

Suitable for Supermarket / subway / office / shopping mall / hotel / hospital / school / showrooms ...



## SPECIFICATIONS

**Volts:** 120-277VAC

**Power Factor:** >0.9

**THD:** <20%

**Average Rated Life:** 50,000

**Beam Angle:** 180°

**CRI:** >80

**CCT:** 4000K/5000K/6500K

**Aluminum gross weight:** 300G

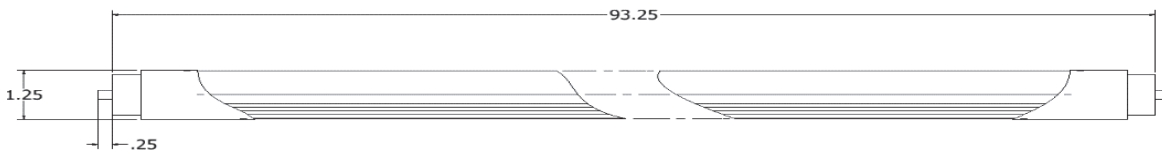
**Ambient temp:** -4°F to 110°F

# 8 FT LED TUBE

## PRODUCT SPECIFICATION

SKU	Power	Lumens	Lumen Efficiency	CCT	LED Type	Voltage
HY-T8-36P8FT	36W	3960	110LM/W	3500K-5000K	192*2835	AC100-277V
HY-T8-50P8FT	50W	5500	110LM/W	3500K-5000K	240*2835	AC100-277V
HY-T8-60P8FT	60W	6600	110LM/W	3500K-5000K	384*2835	AC100-277V

## DIMENSION

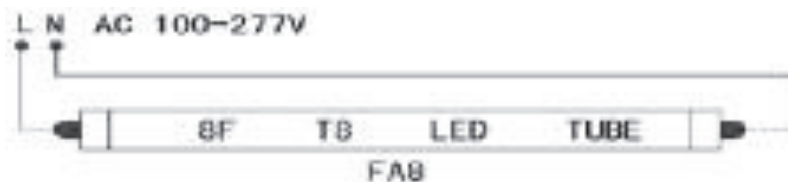


Unit: inch

## PACKAGE INFORMATION

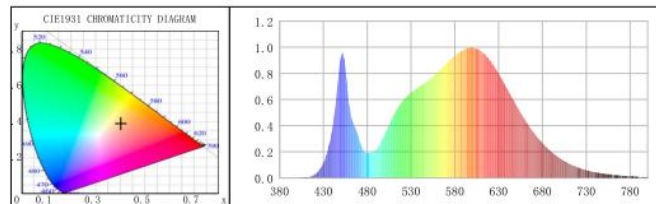
Package Dimension	Package Weight	Pc/Pack
95.0" x 7.5" x 7.0"	33.84 lb	25

## INSTALLATION

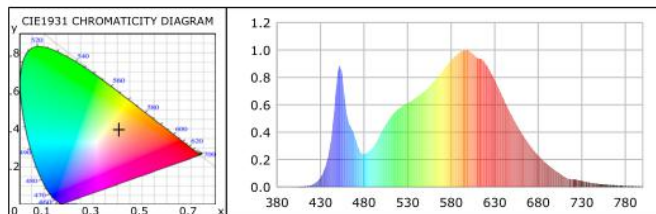


## Photometric Diagram

HY-T8-36P8FT



HY-T8-50P8FT



HY-T8-60P8FT

