

LED TROFFER LIGHT

PRODUCT FEATURES:

- ❖ Optical design, greatly improved the light utilization and evenness.
- ❖ High efficiency LED Driver, voltage AC120-277.
- ❖ Sheet iron design, better cooling, light quality, LED Tj < 85°C.
- ❖ Adjustable power, adjustable color temperature.
- ❖ The 0-10V Dimming type is continuous.
- ❖ The product can dim to 10%.



MODEL #	
PROJECT:	
NOTES:	
DATE:	
PREPARED BY:	

Additional Information:

- Power:20W/25W/30W/34W/38W/45W
- Input: AC 120-277V
- CCT : 3500K/4000K/5000K
- Light Source: SEOUL
- Driver: SIMON POWER



PRODUCT APPLICATIONS:

The Troffer LED Lighting Series can be widely used for Indoor Excellent for Offices, Hallways, Multipurpose Rooms , Office Buildings, Conference Rooms,super market, store and many other applications.

Specifications

Troffer-22/24

Length:604MM/1213MM(23.8"/47.8")

Width: 604MM(23.8")

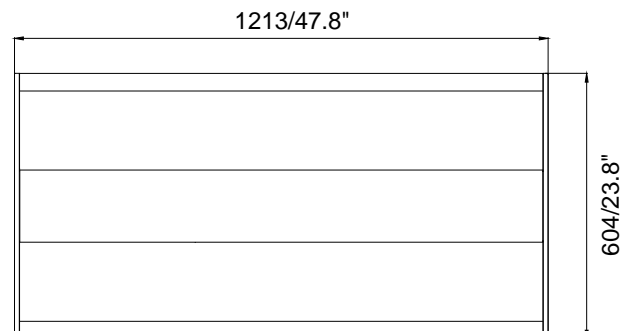
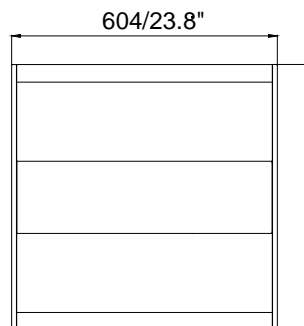
Depth:70MM(2.8")

Weight:7.71/12.76(lbs)

Packaging information

❖**22TRF202530W27-3545K**:648MMX627MMX78MM
(25.5" X24.7" X3.1")

❖**24TRF343845W27-3545K**:1256MMX627MMX78MM
(49.4" X24.7" X3.1")



Mounting

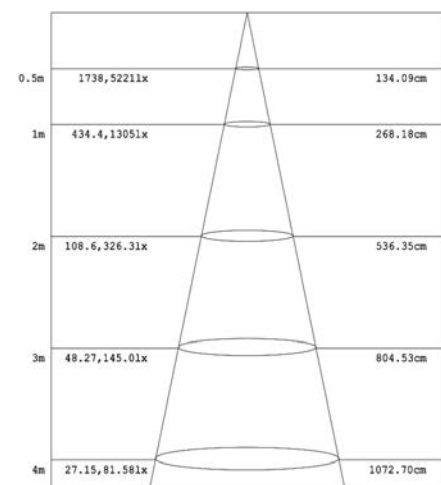
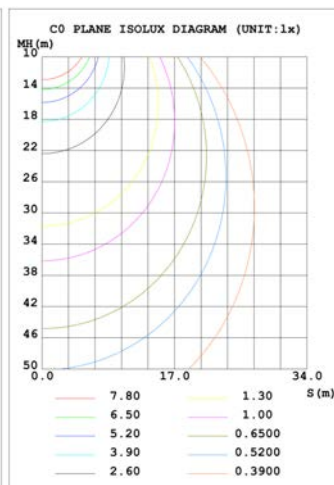
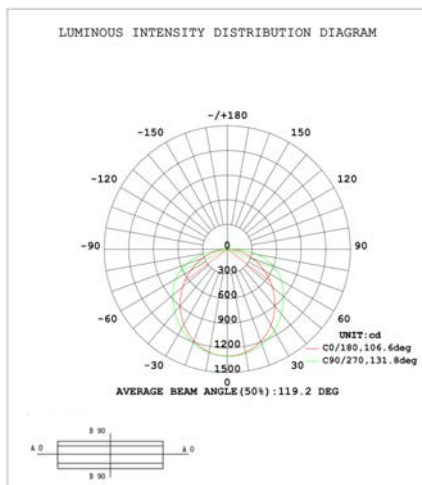
- ❖ Embedded installation.

LED TROFFER LIGHT

TECHNICAL PARAMETERS:

Type	22TRF202530W27-3545K/24TRF343845W27-3545K		
Power	20W/25W/30W/34W/38W/45W	Lighting Angle	119°
Input Voltage	AC120-277V	LED Brightness Decay	<5%/6000 hrs
PF	>0.98	Working Life	>75000 hrs
Driver Efficiency	>90%	Working Temperature	-20 - +50°C
Luminous Flux	2500Lm/3125Lm/3750Lm 4250 Lm/4758Lm/5715 Lm	Storage Temperature	-20 -+50°C
Color Temperature	3500K/4000K/5000K	Protection Level	Dry
CRI	Ra>80	Cable	Input Connect, No Cable

PHOTOMETRY:



ORDERING EXAMPLE:22TRF202530W27-3545K/24TRF343845W27-3545K

22	TRF	202530W	3545K
Size	Product	Power	Color Temp
22 (2X2feet) 24 (2X4feet)	TRF Led Troffer Light	20W (20W) 25W (25W) 30W (30W) 34W (34W) 38W (38W) 45W (45W)	35K (3500K) 4K (4000K) 5K (5000K)

20W/25W
30W/34W
38W/45W

LED TROFFER LIGHT

Control Module:



Adjust the switch

The LED TROFFER LIGHT can adjust the power and color temperature of the whole lamp, which is convenient and fast. The power and color temperature can be selected according to the actual needs of customers. For example, if I want 25W/38W power and 4000K color temperature, you need to shift the dial code switch to the middle position of the switch Greatly,meet the needs of customers.

