

150W LED UFO High Bay Light



Features

- Lumileds LED, high luminous efficiency and long working life.
- Unisolated power supply LED Driver, the wide range input voltage AC100-277V.
- Die Cast aluminium cooling design, high quality and better cooling for LED $T_j < 85^\circ\text{C}$.
- Excellent Optics design, greatly improve the light utilization and evenness.
- Motion sensor Control Available (Option).

Product Applications

WSD LED INCUFO LED High Bay Light series can be widely used in outdoor lighting (Wet location), Excellent for Museums, Art Galleries, Underground parking lot, Buildings, Industrial areas, Residential areas, Parking lot, Schools and etc, and many more applications.

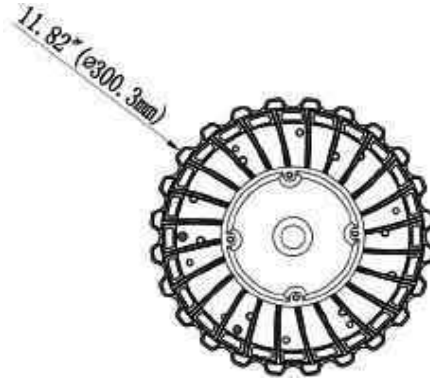
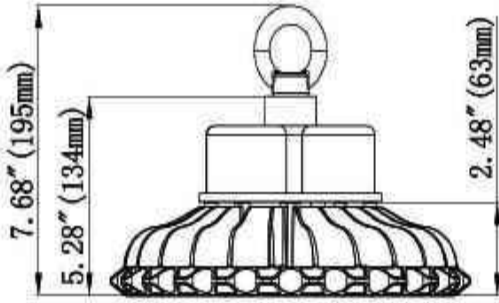


Specifications

Unit : inch(mm)

Structure Features

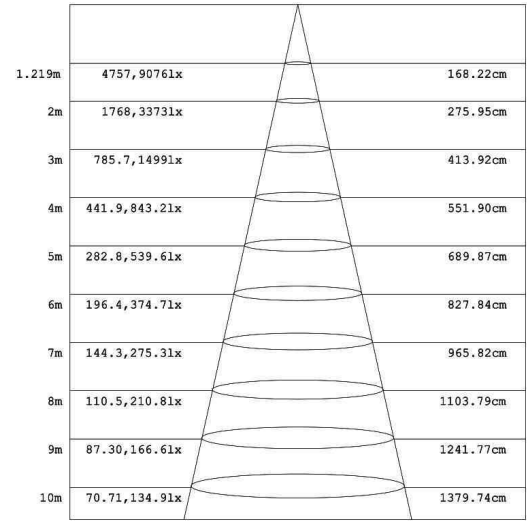
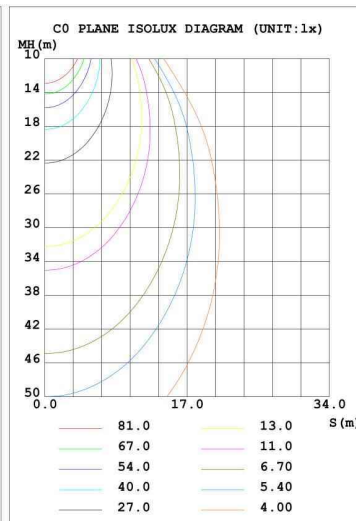
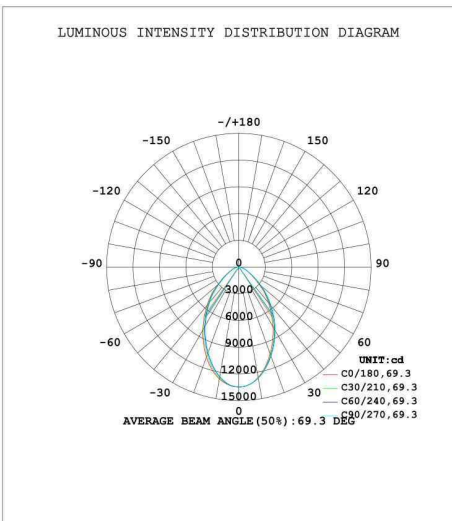
- Shell materials: Aluminum & PC.
- Finish: Black/White
- Net weight : 3.5Kg (7.7 lbs)
- Product Size: ϕ 300mm*195mm
- Carton Size:380mm*380mm*200mm



Technical Parameters

| WSD-UFO15W27-XXK-Z-E | | | |
|----------------------|-----------------------------|----------------------|----------------------|
| Power | 150W | Lighting Angle | 69° |
| Input Voltage | AC100-277V | LED Brightness Decay | <5%/6000 hrs |
| PF | >0.95 | Working Life | >50000 hrs |
| Driver Efficiency | >90% | Working Temperature | -30 - +45°C |
| Luminous Flux | 20400 Lm | Storage Temperature | -40 -+80°C |
| Color Temperature | 4000K/5000K | Protection Level | Wet Location |
| CRI | Ra>80 | Cable | 3 core , 18AWG(1.0m) |
| Dimming function | 1-10Vdc 12V Auxiliary power | Eff | ≥130lm/W |

Photometry



Example: WSD-UFO15W27-XXK-Z[D,W,B,S]-E[Blank,M]

| WSD | UFO | 15W | 27 | XXK | Z | E |
|----------------|-----------------------|-----------|------------|-----------------|-------------------------------------|---------------|
| Company | Product | Power | Voltage | Color Temp | Finish | Control |
| | UFO | 15W(150W) | 27 | 40K(4000K) | D (Dark Bronze) | M |
| WSD LED INC | UFO High Bay Light | | AC100-277V | 50K(5000K)±500K | B (Black) W(White) S(Silvery) | Motion sensor |

Options Information:

Option Sensor: ANT-5-3



On/off control



Daylight sensor



Detection area



Stand-by period



Hold-time



Stand-by dimming level

Operating voltage 12-24Vdc

Microwave frequency 5.8 GHz \pm 75 MHz

Mounting height 50FT(15m) Max

Detection radius 20%/50%/75%/100%(1-8m)

Dim control output 0-10V

Temperature -4°F~+140°F(-20°C ~+60°C)

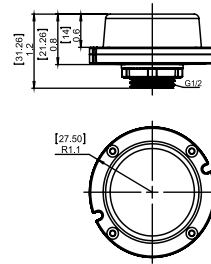
Option Sensor: ANT-5-3



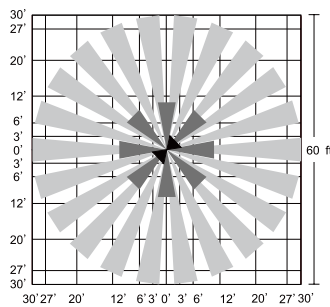
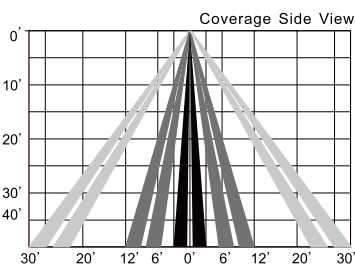
ANT-5-3



RC-100



SENSOR COVERAGE



WIRING DIAGRAMS

