



ATG's LED Vapor Proof fixture is a rugged fixture designed for ambient lighting in indoor or semi-open environments. It is ideal for indoor and outdoor parking zones, gas stations, warehouses, canopies, and other areas that may see exposure to humidity or moisture while requiring high quality light.

Project Details		Type
Project:		
Product:		
Prepared by:		
Notes:		

Product Highlights
<ul style="list-style-type: none"> <li>• IP66 Rated, Suitable For Wet Locations</li> <li>• Up To 166 LPW Efficacy</li> <li>• Optional Microwave Sensor and Emergency Battery Kit</li> <li>• 0-10V Dimming Standard</li> </ul>

**Certifications and Compatibilities**

**10 YEAR WARRANTY**

Product Specs	
Input Voltage (VAC)	120-277 / 347-480
CRI	83
CCT (K)	4000K, 5000K
PF	>.9
THD	15%
Color	White
Housing	Polycarbonate Body & Diffuser
Lens	Clear*, Frosted
Warranty	10 Years <sup>‡</sup>
Operating Temperature	-40°C ~ 50°C (-40°F ~ 122°F)
IK Rating	IK08
Beam Angle	120°
IP Rating	IP66

<sup>‡</sup>see website for warranty terms  
<sup>\*</sup>Frosted Lens is default. Contact Sales for lead time on clear lens.

## Construction

Constructed in a durable plastic; equipped with both clear and frosted lenses for glare prevention and maximized brightness. The Vapor Proof Fixture is IP66 rated for use in wet locations. Combined with the rugged housing, the luminaire is particularly well-suited for industrial applications. Stainless steel clips come standard.



## Order Format

Series	Length	Wattage	CCT	Lens	Voltage
VP	4FT	24W	40 = 4000K	FP = Frosted Lens	Blank = 100-277V
		40W	50 = 5000K	CP = Clear Lens	V = 347-480V

EM, Controls, and Sensor Options	
S0	BRI-810, Digital PIR Bi-level Sensor (behind the lens, factory install only), 120/277VAC, set by DIP switch or remote control (optional)
S1	BRI819P-B-D, Digital PIR Bi-level Sensor, 120/277VAC 40ft Max. by DIP switch or remote control (optional)
E1	EM-0825-010/105-P28, Emergency Kit, Input: 120-277VAC, Emergency Output: 8W, 11-56VDC, Emergency Time: 90 mins
R1	RC-100, Remote Control for BRI Sensors

### EM, Controls, and Sensor Options Continued

PSC-BL-I-FM-110-BLE-SR	Sensor, PIR Occupancy, 120-277V Bluetooth Wireless
PSC-WCM-50-BLE-SR	Controller, Bluetooth Wireless 12-24VDC, 1 Channel 0-10V
PP-AC-PP-700C	Power Pack Relay, 120-277V input, 12VDC Output

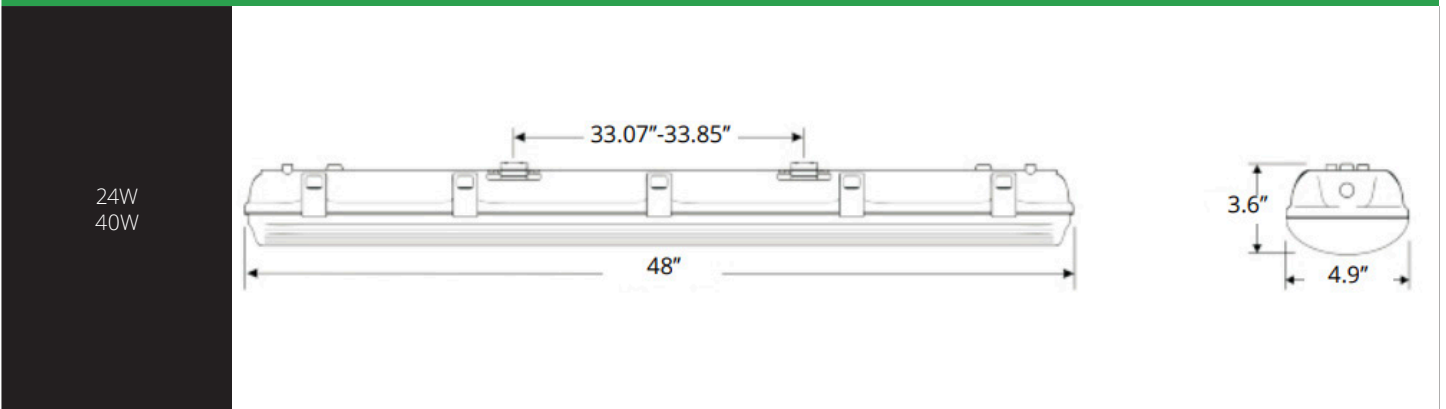
### Lumen Data

Model Number	CCT	Default Watts	System Watts	Efficacy	Lumen‡	Equivalent	DLC	Shipping
VP4FT-24W-40-FP	4000	24	22.4	138	3099 †	2*32W T8	Premium	Quick Ship
VP4FT-24W-50-FP	5000	24	22.2	148	3290	2*32W T8	Premium	Quick Ship
VP4FT-24W-40-CP	4000	24	22.4	151	3380	2*32W T8	Premium	Build to Order
VP4FT-24W-50-CP	5000	24	22.2	161	3571	2*32W T8	Premium	Build to Order
VP4FT-40W-40-FP	4000	40	37.7	131	4938 †	3*32W T8	Premium	Quick Ship
VP4FT-40W-50-FP	5000	40	32.2	139	5169 †	3*32W T8	Premium	Quick Ship
VP4FT-40W-40-CP	4000	40	37.7	146	5488 †	3*32W T8	Premium	Build to Order
VP4FT-40W-50-CP	5000	40	32.2	152	5653	3*32W T8	Premium	Build to Order

† DLC Tested data

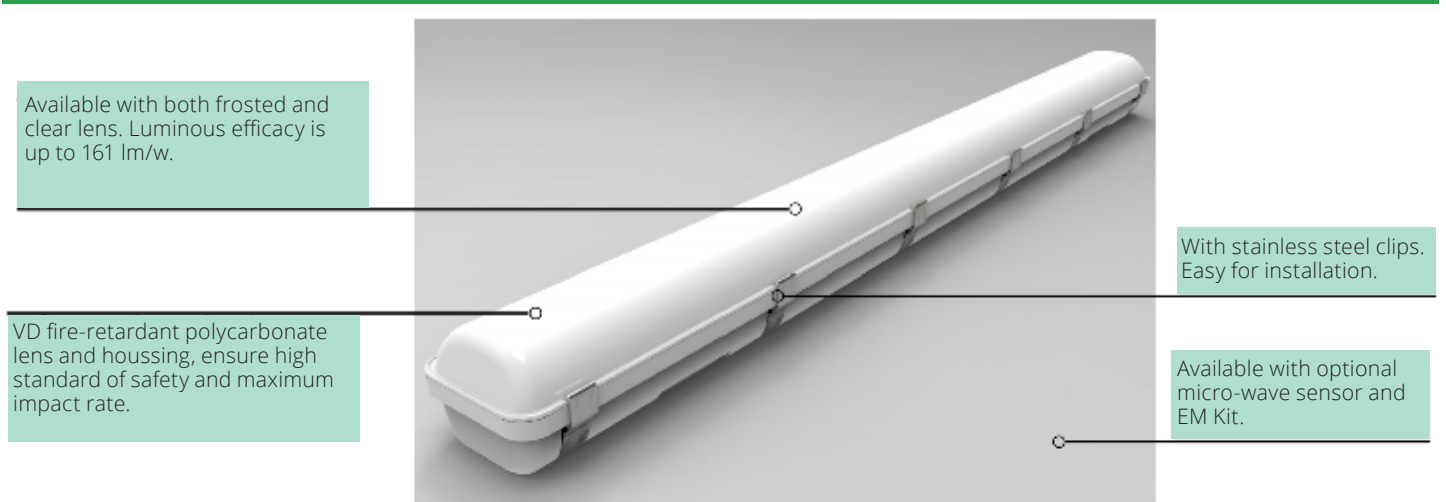
‡ DLC Reported Data

### Dimensions



Model Number	Length	Width	Height
VP4FT-24W	48" (1200mm)	4.9" (125mm)	3.6" (92mm)
VP4FT-40W	48" (1200mm)	4.9" (125mm)	3.6" (92mm)

### Mounting

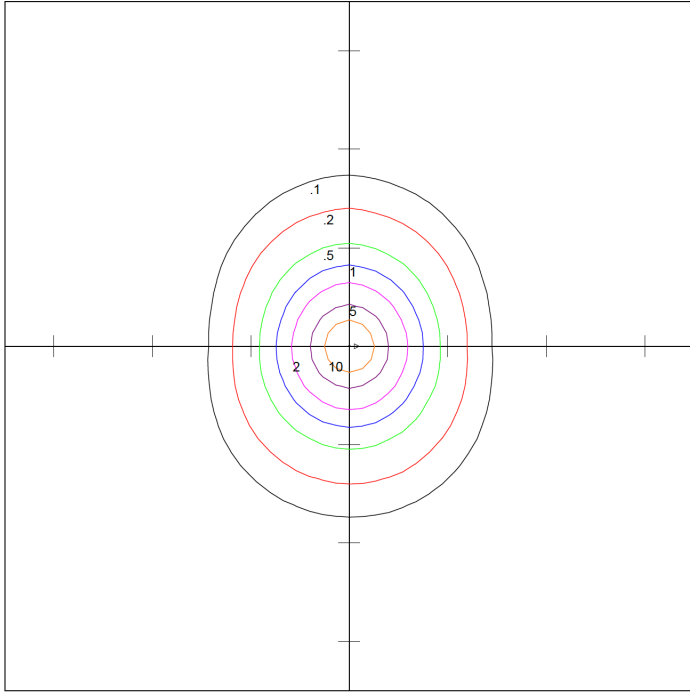


## Projected Lumen Maintenance

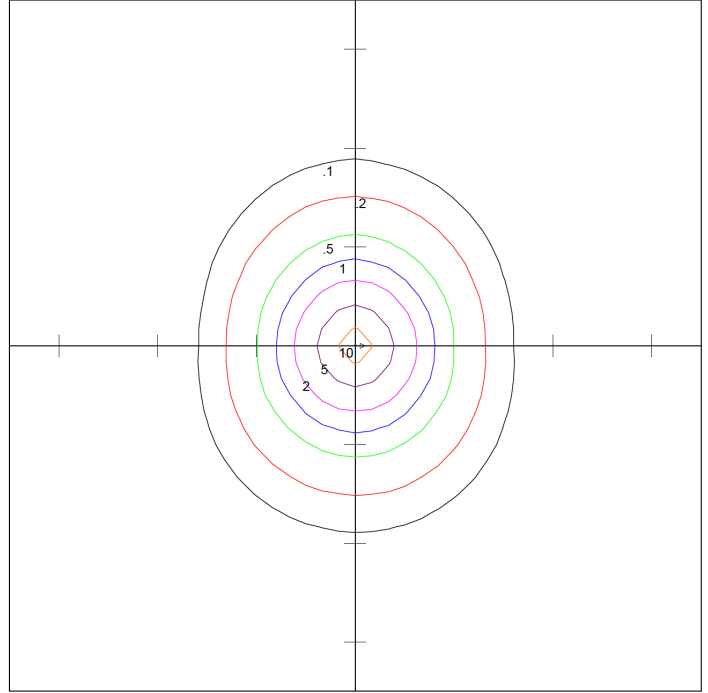
Model Number	Ambient Test Temp	Reported Hrs ‡	0 Hours	25,000 Hours	TM21-11 † L89 54,000	50,000 Hours	100,000 Hours	L70 Hours †
VP4FT-40W-40-FP	25°C / 77°F	>54,000	1.0	.95	>54,000	.9025	.8143	173,500

† Projected per IESNA TM-21-11

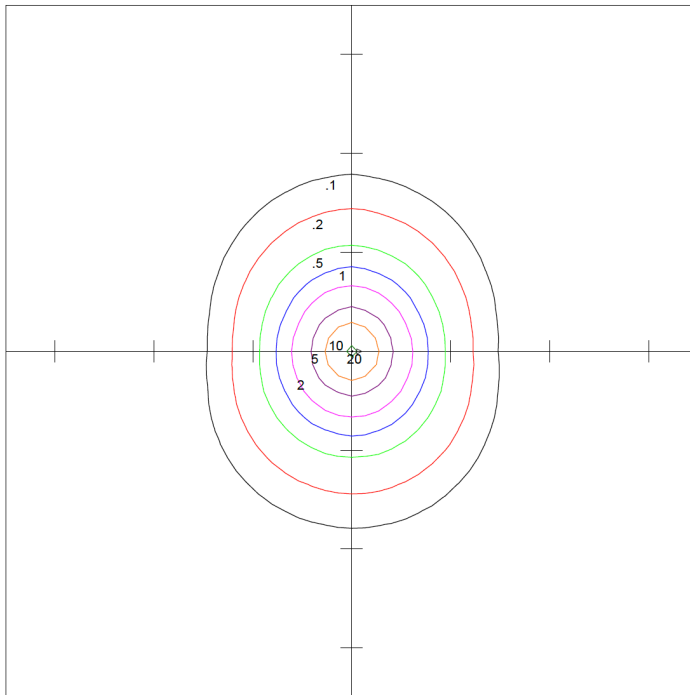
‡ DLC Reported Hours = Max 6x LM-80 tested duration (HL-AS-PU2835DW-S1-08-PCT-HR3 @9,000hrs)



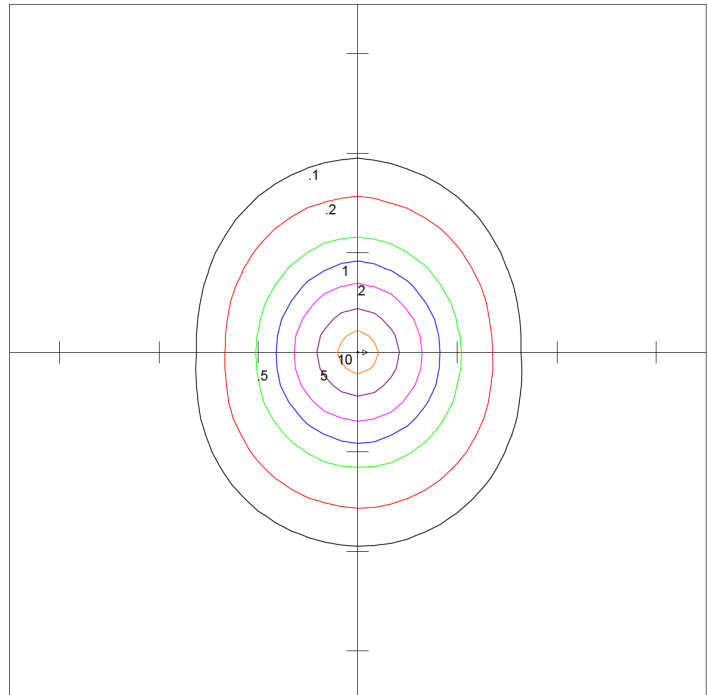
**Vapor Proof VP4FT-40W-50-PP**  
48"x"L. X 4.9"W. X 3.6"H.  
Scale: 1 inch = 20 FT  
Mounting Height = 8 FT



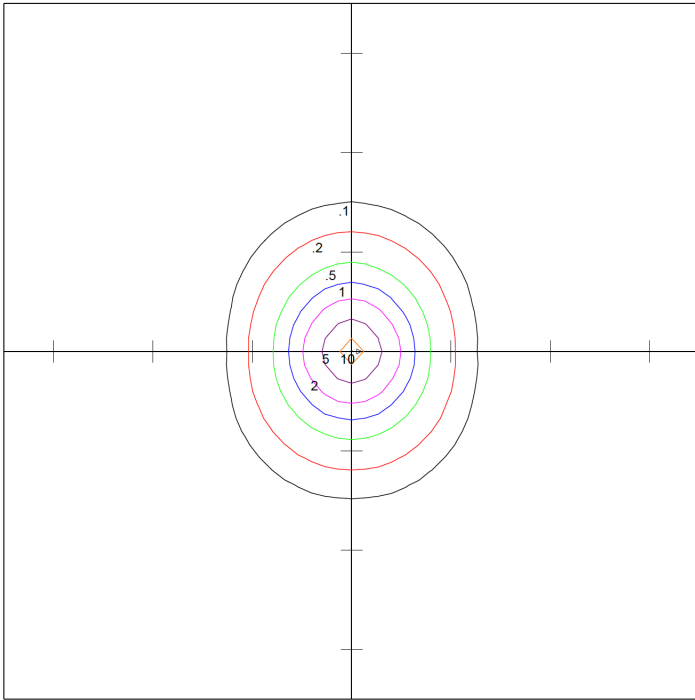
**Vapor Proof VP4FT-40W-50-PP**  
48"x"L. X 4.9"W. X 3.6"H.  
Scale: 1 inch = 20 FT  
Mounting Height = 10 FT



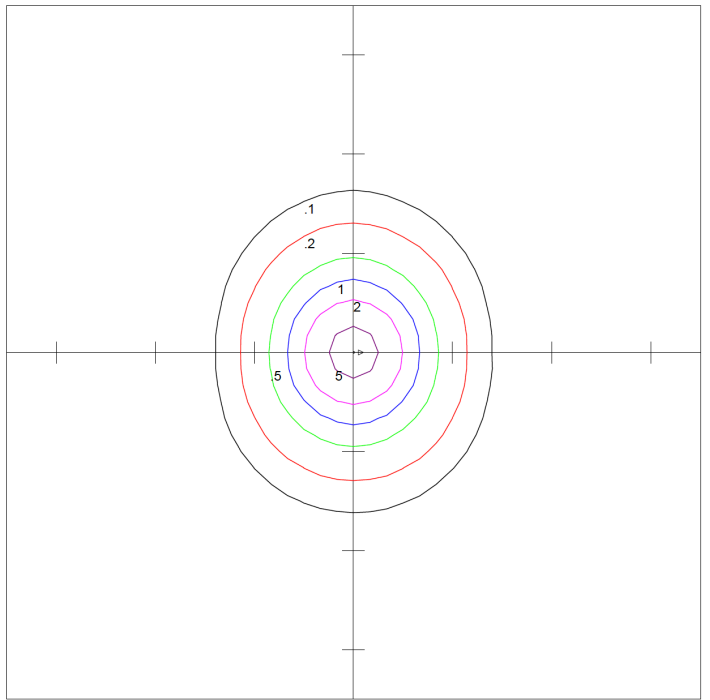
**Vapor Proof VP4FT-40W-50-CP**  
48"x"L. X 4.9"W. X 3.6"H.  
Scale: 1 inch = 20 FT  
Mounting Height = 8 FT



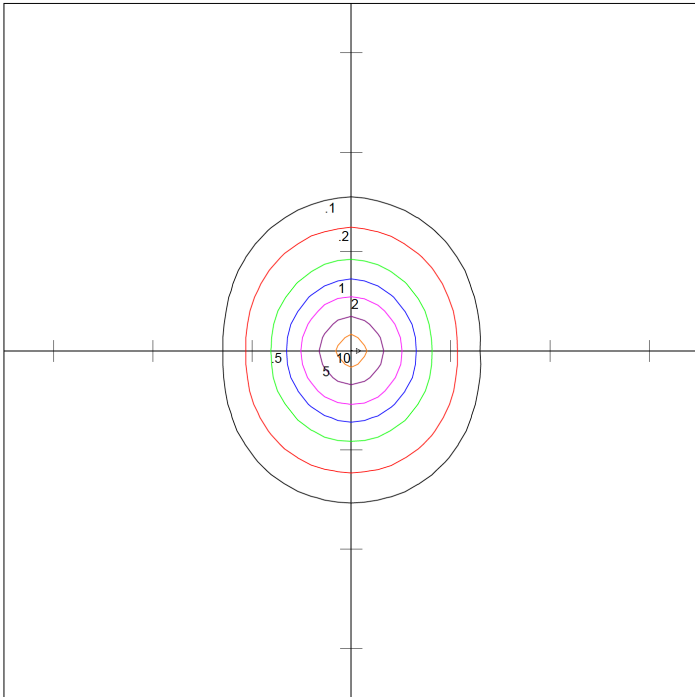
**Vapor Proof VP4FT-40W-50-CP**  
48"x"L. X 4.9"W. X 3.6"H.  
Scale: 1 inch = 20 FT  
Mounting Height = 10 FT



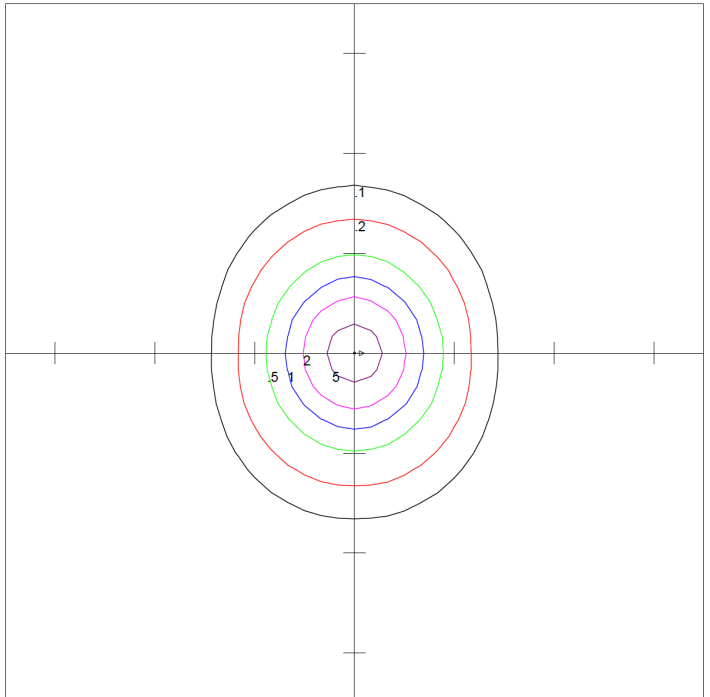
**Vapor Proof VP4FT-24W-50-FP**  
 48x"L. X 4.9"W. X 3.6"H.  
 Scale: 1 inch = 20 FT  
 Mounting Height = 8 FT



**Vapor Proof VP4FT-24W-50-FP**  
 48x"L. X 4.9"W. X 3.6"H.  
 Scale: 1 inch = 20 FT  
 Mounting Height = 10 FT



**Vapor Proof VP4FT-24W-50-CP**  
 48x"L. X 4.9"W. X 3.6"H.  
 Scale: 1 inch = 20 FT  
 Mounting Height = 8 FT



**Vapor Proof VP4FT-24W-50-CP**  
 48x"L. X 4.9"W. X 3.6"H.  
 Scale: 1 inch = 20 FT  
 Mounting Height = 10 FT

Electrical Accessories

BRI-819

Bi-Level Sensor



The BRI819P indoor sensors provide multi-level occupancy control, controlling 0-10V LED drivers . All parameters are adjustable via a wireless configuration tool capable of storing and transmitting sensor profiles.BRI-819 can be installed through knockout on the end of the fixture.

FEATURES

- Rated Voltage 120-277VAC
- Rated Frequency 50/60 Hz
- Time Setting 10 Sec-60 Min (adjustable)
- Light Control 10-6000 Lux (adjustable)

[Download the PDF of the BRI-819 here.](#)

RC-100

Remote for BRI Series



The remote control Wireless IR Configuration Tool is a handheld tool for remote configuration of IA-enabled fixture integrated sensors. The tool enables device to modify via pushbutton without ladders or tools, and stores up to four sensor parameter modes to speed configuration of multiple sensors.

FEATURES

- Power Supply requires 2xAAA 1.5V battery (Alkaline preferred)
- RC-100 in carrying case
- 940 nm Infrared Tx & Rx
- Upload Range up to 15 m (50ft)
- Operation Temperature from 0°C to -50°C
- Dimensions: 4.84"x2.76"x0.8"

[Download the PDF of the RC-100 here.](#)

EM-0825-010/105-P25

Emergency Driver Pack



UL listed emergency driver pack (with LiFePO4 battery) for indoor fixtures.

FEATURES

- Input Voltage 100-277VAC 50/60 Hz
- Output Power 8W
- Output Voltage 11-56VDC
- Emergency 90 mins

[Download the PDF of the EM-0825-010/105-P28 here.](#)

BRI-810

Bi-Level Sensor



BRI810-B-F is a moving object sensor with 360° detect range and 5.8GHz working frequency. It provides multi-level control based on motion and daylight contribution. It control 0-10VDC LED drivers. Settings can be adjusted via remote controller. BRI-810-B-F can be installed inside the fixture, behind the lens.

FEATURES

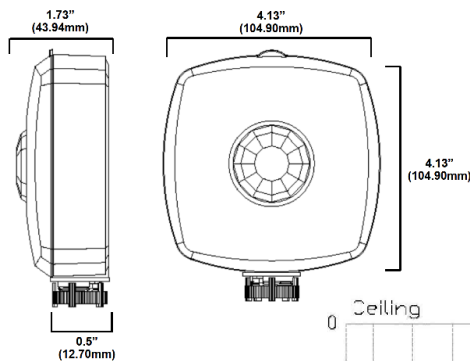
- Rated Voltage 120-277VAC
- Rated Frequency 50/60 Hz
- Remote Range 33ft
- Ambient Temperature -40°C ~ +70°C

[Download the PDF of the BRI-810 here.](#)

PSC-BL-I-FM-110-BLE-SR



*Suitable for indoor Use Only*

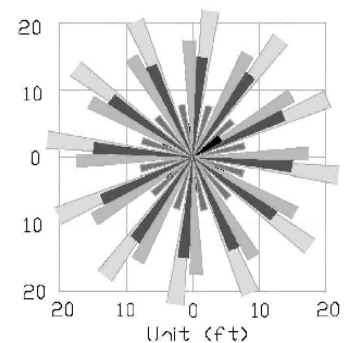
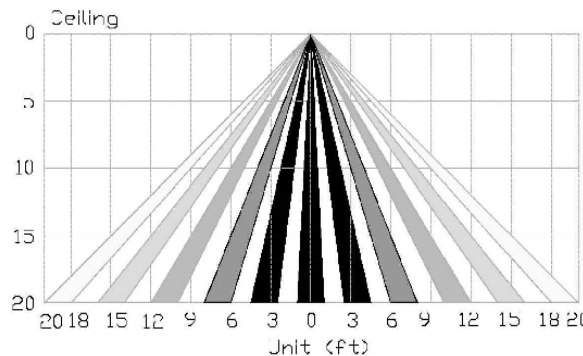


The ATG Wireless Control System PSC-BL-I-FM-110 provided by McWong can accept universal input (120-277 VAC) to use the PIR Motion Detector Architecture and passive infrared (PIR) technology for improved detection coverage for high bay, and low bay applications.

FEATURES

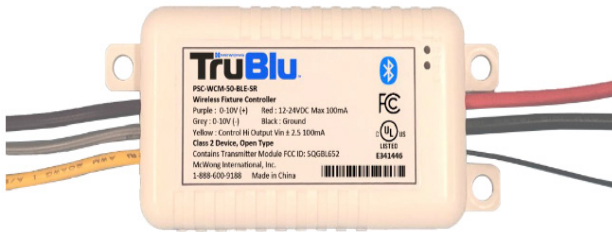
- PIR Sensor
- Inout voltage: 120-277VAC, 50/60Hz
- 0-10V configurable output: set to 0% (OFF)\*, 10%, 25% or 50% dimming
- Photocell for daylight sensing
- Time delay 1 adjustable 5 sec to 30 min
- Time delay 2 adjustable 10 sec to
- LED Motion indicator
- Mounting height up to 40 ft.
- 360 coverage pattern

[Download the PDF of the PSC-BL-I-FM-110-BLE-SR here.](#)



\*PSC-BL-I-FM-110 does not require additional power

**PSC-WCM-50-BLE-SR**



The ATG Wireless Control System PacWave™ Wireless Fixture Controller allows for one channel of 0-10 dimming, high relay control, and is made to fit into a Blue-tooth mesh system. This unit is controlled wirelessly via Bluetooth® Mesh module allowing for wireless dimming of LED lighting and seamless integration of Bluetooth® Mesh software solutions. The small physical size allows for this unit to be place within the fixture, for use when occupancy detection is not needed.

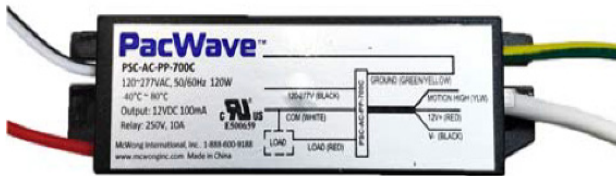
**FEATURES**

- 1 Channel of 0-10 Dimming
- Active High Output
- Bluetooth Mesh Enabled

[Download the PDF of the PSC-WCM-50-BLE-SR here.](#)

\*PSC-WCM-50\_BLE-SR will require additional 12vdc power pack source power pack

**PSC-AC-PP-70C-BLE-SR**



**Wireless Control System – 12V Power Pack w/relay PSC-AC-PP-700C**

McWong’s PacWave™ PSC-AC-PP-700C Power Packs are designed to operate in a wide range of applications that require high voltage switching through low voltage controls. Typical applications include lighting controls in classrooms, conference rooms, and offices.

McWong’s PacWave™ PSC-AC-PP-700C Power Packs incorporate a line voltage transformer which can accept universal input (120-277VAC).

**FEATURES**

- Self Contained transformer relay system
- Powers low voltage sensors (12VDC)

[Download the PDF of the PSC-AC-PP-70C-BLE-SR here.](#)

## 10 Year Warranty

ATG Electronics®

Industry Leading 10 Year Limited Warranty

For North American LED Lighting Fixtures

ATG Electronics warrants to the original purchaser of ATG Electronics Domestic LED products listed above that were manufactured for which the ATG Electronics Spec Sheet located on our website contains the words "10 year limited warranty" that, subject to the below terms and conditions of this warranty, when such LED products are properly installed they will comply with ATG Electronics published product specifications for such products and will be free from material defects in material and workmanship for a period of ten (10) years from the date of sale by ATG Electronics, or, if lesser, 50,000 hours of operation (at an average of 13.6 hours per day operation). The LED arrays in the Product(s) will be considered defective in material or workmanship only if a total of 15% or more of the individual light emitting diodes in the Product(s) fail to illuminate.

The above express limited warranty is extended by ATG Electronics® only to the original or first end-user purchaser and only for the original installed location. This warranty only applies to products purchased after June 1, 2017. This warranty is non-transferrable, whether by assignment or operation of law. The original purchaser must provide warranty claims to ATG Electronics within the warranty period promptly upon discovery and in accordance with ATG Electronics Return and Repair Procedures as outlined within this document.

Should any defects be found by ATG Electronics upon its inspection of the properly returned product, ATG Electronics sole responsibility and liability under this warranty will be, at its option, to either repair or replace the defective part or parts or else make available a new replacement unit that will provide equal or better performance. All decisions regarding the existence or non-existence of defects or otherwise affecting the warranty shall be made by ATG ELECTRONICS and shall be final and binding on all parties. Where a defective LED product is replaced under this warranty, the balance of the original warranty period shall remain effective.

### Conditions and Exclusions

This warranty is conditioned upon proper installation, use and maintenance. This warranty will automatically become null and void and shall not be applicable to any LED fixture which (i) has not been timely paid for, (ii) is not installed and operated in accordance with the current edition of The National Electric Code (NEC), the Standards for Safety of Underwriters' Laboratory, Inc. (UL) or with ATG Electronics instructions and guidelines, (iii) has been moved from its original installation, (iv) has been installed within an area that has exposure to sulfur or any area with high acidic compounds in use, (v) has been operated in an ambient temperature or humidity that is higher than 35 degrees Celsius, (vi) has been subjected to a lightning strike, power surge or overvoltage condition, (vii) has its LED Board subjected to static electricity due to failure to discharge same prior to connecting or disconnecting the lead from the LED board, (viii) was not installed and/or operated in accordance with ATG Electronics instructions and guidelines, (ix) has been mishandled, misused, abused, tampered with, modified or altered by anyone other than ATG ELECTRONICS, (x) has been subjected to abnormal stresses and operating conditions, or (xi) has been operated without overvoltage and lightning protection devices in place.

### Limitations

#### Disclaimers & Limitations of Liability

The foregoing warranty is exclusive of all other statutory, written or oral warranties and no other warranties of any kind, statutory, by operation of law or course of performance, or otherwise, are given, herein expressed or otherwise received. EXCEPT AS EXPRESSLY PROVIDED ABOVE, ATG ELECTRONICS DISCLAIMS ALL REPRESENTATIONS, WARRANTIES AND CONDITIONS OF ANY KIND, EXPRESS OR IMPLIED, REGARDING THE LED PRODUCTS AND ITS SERVICES, INCLUDING, WITHOUT LIMITATION, THE IMPLIED WARRANTIES OF MERCHANTABILITY AND FITNESS FOR A PARTICULAR USE OR PURPOSE.

**LIMITATION OF LIABILITY.** Other than the obligation to repair or replace as provided above, ATG Electronics shall have no liability for any losses, expenses or damages as a result of the installation, use, inability to use, removal or replacement of any LED product. ATG Electronics will not under any circumstances whether as a result of breach of contract, breach of warranty, tort, strict liability or otherwise be liable for consequential, incidental, special or exemplary damages including but not limited to, loss of profits or revenues, loss of any other goods or associated equipment or damage to any associated equipment, cost of capital, cost of substitute products, facilities or services, down time cost or claims of claimant's customers. ATG Electronics liability on any claim of any kind for any loss or damages arising out of, resulting from or concerning any LED product, any aspect of this warranty or for any products or services furnished hereunder shall not exceed the price of the fixture which gives rise to the claim.

### Return and Repair Procedures

All warranty requests and or questions are to be directed to ATG Electronics Customer Service Department (CSD) at 888-618-7298. If deemed necessary, the CSD will issue a Returned Merchandise Authorization (RMA) number which must be included on both the packing slip of the component or fixture being returned and on the outside of the box. You must include your name and contact information, including your email address, on the packing slip so that we can contact you easily. Each component or fixture must be packaged very carefully and properly so as to prevent damages in shipment and must be shipped freight prepaid. Please obtain a proof of delivery to ensure that the material is received.

Once the component or fixture has been received and tested, an evaluation report will be provided to the end user via email. This report will clarify the following:

- A) The component / fixture is covered under the warranty policy and will either be repaired or replaced.
- B) The component / fixture is not covered under the warranty policy and the reason for this determination.

If ATG ELECTRONICS determines that the component or fixture is covered under the warranty, then the appropriate repairs will be started or a replacement fixture will be manufactured and shipped. Please note that in the event the returned component or fixture is found not to be covered under this warranty, you may be subject to a labor charge for the evaluation process and will be responsible for all return shipping charges and fees. For components and fixtures determined to be covered under this warranty prior to the first anniversary of the Sale Date, the repaired or replacement component or fixture will be returned to you at no charge. You will be responsible for all other shipping charges.

### No Labor Reimbursement

All components and fixtures determined to be covered by this warranty as provided above, will be repaired or replaced at no charge to the customer, however, except as expressly provided above with respect to recessed and linear fixtures during the first year, the customer must hire and pay for an electrician to remove and reinstall such components and fixtures. No labor costs will be covered for the removal or reinstallation of any components or fixtures. The warranty does not cover modifications, repairs or replacements, or the related labor or materials costs, that may be necessary to facilities or third party products in connection with the removal, repair, or replacement of any LED product under this warranty.