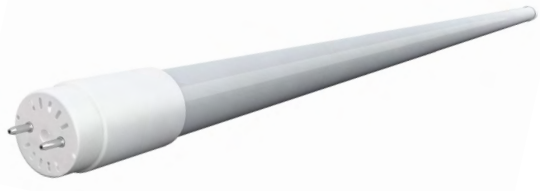


# T8 Type B Double Bypass T8 LED Tube Indoor

ATG Type B Double Bypass T8 LED Lamps have been designed and engineered for demanding commercial applications. The lamp's coated glass diffusing tube and compact light engine produce 325° of evenly diffused light. The micro-designed driver allows for a smaller end cap and end-to-end lighting with no dark spots.



| Luminaire | Type B Bypass T8 | Type |
|-----------|------------------|------|
| Project   |                  |      |
| Product   |                  |      |
| Notes     |                  |      |

- Features**
- 32W fluorescent replacement
  - Wide beam 325° light emitting area
  - Suitable for use in enclosed fixtures and damp locations
  - with diffusion coating, will maintain the same light quality over time and will not yellow, shrink or wrinkle
  - double/single ended bypass installation. Cut ballast out, and wire the sockets to line voltage
  - Instant on. No warm-up time. Full brightness instantly.



## Application

This UL listed tube requires bypassing the ballast during installation and runs directly off line voltage to eliminate compatibility problems, incidental power loss, lifetime issues, and maintenance costs associated with ballasts. See instructions on page 2.

**Construction**  
The glass tube is built with a micro-designed driver that allows for a smaller end cap and end-to-end lighting with no dark spots. PET coated tubes are NSF rated for shatter protection in food preparation areas.

## Electrical

Luminous efficacy is 125- 130Lm/W. Luminaire lifespan is rated at 50,000 hours. Standard input voltage is 120-277, within the built in micro driver.

|                            |   |
|----------------------------|---|
| <b>Power (W)</b>           | 14, 17  |
| <b>Input Voltage (VAC)</b> | 120-277, 50/60 Hz   |
| <b>CRI</b>                 | 80  |
| <b>CCT(K)</b>              | *3,000, *3,500, 4,000, 5,000                              |
| <b>L70 (Hours)</b>         | 50,000  |
| <b>Base</b>                | G13   |
| <b>Color</b>               | White   |
| <b>Housing</b>             | Shatter proof glass                                       |
| <b>Lens</b>                | Glass diffuser, 325° light emitting area, 160° beam angle |
| <b>Warranty</b>            | 5 Years   |
| <b>Temperature</b>         | -4(-20°F) to °C 113°C(45°F)                               |
| <b>Installation Type</b>   | UL Type B, Double/Single Ended Bypass                     |
| <b>Length</b>              | 4ft   |

**Optics**  
The lamp's coated glass diffusing tube and compact light engine produce a wide beam 325° of evenly diffused light.

## Certifications/Listings

- UL
- NSF
- RoHS
- FCC

\* special order, for more details contact ATG sales rep

## Lumens

| Model           | Watts | Lumens | CCT   | CRI | Efficacy | Angle | PF  | THD | Instant Shipping | Listing     |
|-----------------|-------|--------|-------|-----|----------|-------|-----|-----|------------------|-------------|
| T8F4S-14-830-BD | 11W   | 1750LM | 3000K | 82  | 125 LPW  | 160°  | 0.9 | 20% | No               | UL/DLC/RoHS |
| T8F4S-14-835-BD | 11W   | 1750LM | 3500K | 82  | 125LPW   | 160°  | 0.9 | 20% | No               | UL/DLC/RoHS |
| T8F4S-14-840-BD | 11W   | 1800LM | 4000K | 82  | 129LPW   | 160°  | 0.9 | 20% | Yes              | UL/DLC/RoHS |
| T8F4S-14-850-BD | 11W   | 1800LM | 5000K | 82  | 129LPW   | 160°  | 0.9 | 20% | Yes              | UL/DLC/RoHS |
| T8F4S-17-830-BD | 14W   | 2100LM | 3000K | 82  | 124LPW   | 160°  | 0.9 | 20% | No               | UL/DLC/RoHS |
| T8F4S-17-835-BD | 14W   | 2100LM | 3500K | 82  | 124LPW   | 160°  | 0.9 | 20% | No               | UL/DLC/RoHS |
| T8F4S-17-840-BD | 14W   | 2200LM | 4000K | 82  | 130LPW   | 160°  | 0.9 | 20% | Yes              | UL/DLC/RoHS |
| T8F4S-17-850-BD | 14W   | 2200LM | 5000K | 82  | 130LPW   | 160°  | 0.9 | 20% | Yes              | UL/DLC/RoHS |

**Installation Instructions**

**WARNING** - Risk of fire or electric shock. LED Retrofit Kit installation requires knowledge of luminaire electrical systems. Installation should be performed only by a qualified electrician in accordance with the National Electrical Code and relevant local code.

**WARNING** - Risk of fire or electric shock. Install this kit only in the luminaires that have the construction features and dimensions shown in the photographs and/or drawings.

**WARNING** - To prevent wiring damage or abrasion, do not expose wiring to edges of sheet metal or other sharp objects.

**WARNING** - Risk of fire or electric shock. Luminaire wiring and electrical parts may be damaged when drilling for installation of LED retrofit kit. Check for enclosed wiring and components.

- Disconnect power at the source before installation, inspection or removal. Do not simply switch off fixture.
- This item is rated at 120-277V. Installer must determine whether line voltage 120-277V is available at the luminaire before installation.
- Not intended for use with emergency exit fixtures or emergency exit lights.
- Not for use with luminaire ballast.
- Do not use if product is damaged.
- This lamp is non-dimmable. Not for use with dimmers.
- Suitable for use with non-shunted and shunted lamp holders.
- Do not make or alter any open holes in an enclosure of wiring or electrical components during kit installation.
- "This luminaire has been modified where readily visible by the user during normal maintenance including re-lamping.
- Risk of fire or electric shock. Do not open or modify. No user serviceable parts inside.
- Installers should not disconnect existing wires from lamp holder terminals to make new connections at lamp holder terminals. Instead installers should cut existing lamp holder leads away from the lamp holder and make new electrical connections to lamp holder lead wires by employing applicable connectors.
- SUITABLE FOR DAMP LOCATIONS. Suitable for use in wet locations when used in an outdoor-rated fixture. Not for use where directly exposed to the weather or water. Complies with Part 15 of FCC. Operation is subject to the following two conditions: (1) This device may not cause harmful interference, and (2) This device must accept any interference received including interference that may cause undesired operation.
- SUITABLE FOR "TYPE IC" OR "TYPE NON-IC" LUMINAIRES.
- No external weight or mechanical force should be applied to tube or components.
- THE RETROFIT ASSEMBLY IS ACCEPTED AS A COMPONENT OF A LUMINAIRE WHERE THE SUITABILITY OF THE COMBINATION SHALL BE DETERMINED BY UL OR AUTHORITIES HAVING JURISDICTION.

