

ATG's DUO Linear Stairwell fixtures, available in 2', 4', and 8' lengths with selectable wattage & CCT settings, effectively illuminate stairwells and passageways in commercial and industrial applications. The LSW provides an appealing design while offering the latest, high performance components and options such as a concealed motion sensor and emergency battery backup.

Project Details		Type
Project:		
Product:		
Prepared by:		
Notes:		

Product Highlights
<ul style="list-style-type: none"> • Selectable wattage & CCT • Up to 152 LPW • 0 - 10V dimming • Calculated L70 > 216,000 Hours • 10-year warranty

Product Specs	
Input Voltage (VAC)	100-277V / 100-347V
Wattage	10, 12, 14, 15, 18, 20, 25, 30, 40, 45, 60, 70, 80
CCT (K)	3000, 4000, 5000* Switchable
Projected Lifetime	216,000 Hours (Calculated L70) 360,000 Hours (Reported L70)
Limited Warranty	10 Years [†]
CRI	80+
Finish Color	White (JA01WZ)
Housing	Die Cast Aluminum
Optic Types	Frosted, Clear
Dimming	0-10V Dimming (0% to 100%)
Operating Temperature	-25°C ~ 40°C
IP Rating	IP20
Power Cable	4' - 18/3 SO cord

*contact sales for lead time and stock info on 3500K
 **contact sales for lead time on customized finish color
 †see website for warranty terms

Certifications and Compatibilities

Motion Sensor

0-10V Dim

-30°C - 50°C Operating

10 Year Warranty

RoHS

CE

24

FCC

DLC QUALIFIED PREMIUM

Order Format											Example: LSW-2FT-30-T1-F-SL			
Series	-	Length	-	Wattage	-	Selectable CCT	-	Lens	-	Option				
LSW	-	-2FT	-	-30	30W / 20W / 15W / 10W	-	T1	CCT + Wattage Selectable	-	F	Frosted	-	SL	BRI-810-LV
	-	-4FT	-	-40	40W / 25W / 18W / 12W	-		3000K/4000K/5000K	-	C	Clear	-	S1	BRI-819
	-	-8FT	-	-80	80W / 70W / 60W / 45W	-			-			-	EM	EM-0825-010/105-P28

Options	
SL	BRI-810-LV
S1	BRI-819
EM	EM-0825-010/105-P28

**contact sales for lead time and pricing on customized finish color

Performance Chart

Model Number	Default Wattage	Voltage	CRI	Optics	THD	PF	CCT	Calc. L70
LSW-2FT-30-T1-F-SL	10W	100-277	80+	T1	<20%	>0.9	3000K/4000K/5000K Selectable	216,000 Hrs
	15W	100-277	80+	T1	<20%	>0.9	3000K/4000K/5000K Selectable	216,000 Hrs
	20W	100-277	80+	T1	<20%	>0.9	3000K/4000K/5000K Selectable	216,000 Hrs
	30W	100-277	80+	T1	<20%	>0.9	3000K/4000K/5000K Selectable	216,000 Hrs
LSW-2FT-30-T1-C-SL	10W	100-277	80+	T1	<20%	>0.9	3000K/4000K/5000K Selectable	216,000 Hrs
	15W	100-277	80+	T1	<20%	>0.9	3000K/4000K/5000K Selectable	216,000 Hrs
	20W	100-277	80+	T1	<20%	>0.9	3000K/4000K/5000K Selectable	216,000 Hrs
	30W	100-277	80+	T1	<20%	>0.9	3000K/4000K/5000K Selectable	216,000 Hrs
LSW-4FT-40-T1-F-SL	12W	100-277	80+	T1	<20%	>0.9	3000K/4000K/5000K Selectable	216,000 Hrs
	18W	100-277	80+	T1	<20%	>0.9	3000K/4000K/5000K Selectable	216,000 Hrs
	25W	100-277	80+	T1	<20%	>0.9	3000K/4000K/5000K Selectable	216,000 Hrs
	40W	100-277	80+	T1	<20%	>0.9	3000K/4000K/5000K Selectable	216,000 Hrs
LSW-4FT-40-T1-C-SL	12W	100-277	80+	T1	<20%	>0.9	3000K/4000K/5000K Selectable	216,000 Hrs
	18W	100-277	80+	T1	<20%	>0.9	3000K/4000K/5000K Selectable	216,000 Hrs
	25W	100-277	80+	T1	<20%	>0.9	3000K/4000K/5000K Selectable	216,000 Hrs
	40W	100-277	80+	T1	<20%	>0.9	3000K/4000K/5000K Selectable	216,000 Hrs
LSW-8FT-80-T1-F-SL	45W	100-347	80+	T1	<20%	>0.9	3000K/4000K/5000K Selectable	216,000 Hrs
	60W	100-347	80+	T1	<20%	>0.9	3000K/4000K/5000K Selectable	216,000 Hrs
	70W	100-347	80+	T1	<20%	>0.9	3000K/4000K/5000K Selectable	216,000 Hrs
	80W	100-347	80+	T1	<20%	>0.9	3000K/4000K/5000K Selectable	216,000 Hrs

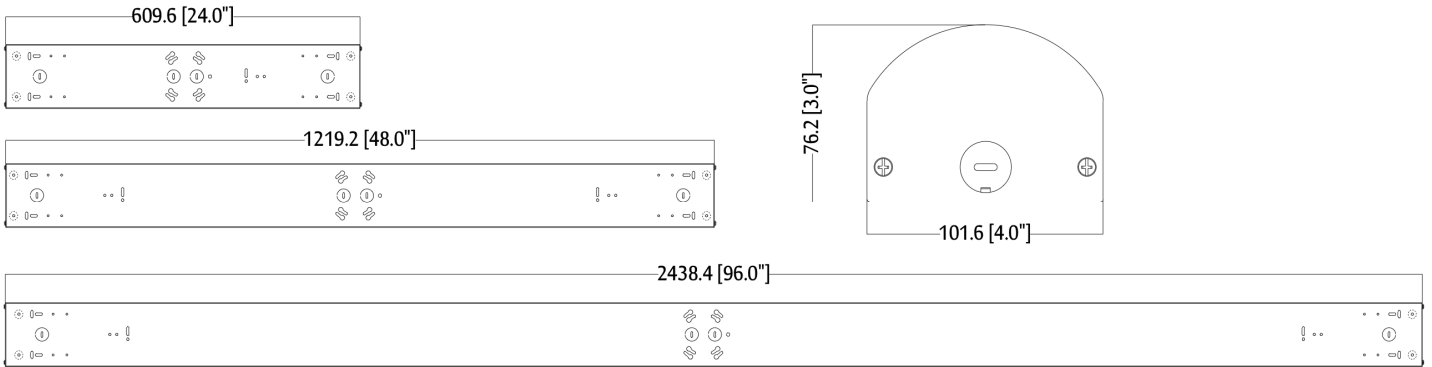
Model Number	3000K Frosted			3000K Clear		
	System Watts	Efficacy (LPW)	Lumen (LM)	System Watts	Efficacy (LPW)	Lumen (LM)
LSW-2FT-30-T1-F-SL LSW-2FT-30-T1-C-SL	10.4	129.9	1355.7	10.4	144.9	1511.2
	15.6	132.4	2071.5	15.6	149.9	2343.7
	19.5	132.4	2583.6	19.5	149.7	2923.1
	31.0	127.9	3966.5	31.0	145.0	4487.7
LSW-4FT-40-T1-F-SL LSW-4FT-40-T1-C-SL	11.3	130.3	1407.8	11.3	147.4	1664.1
	17.9	134.9	2418.7	17.9	152.6	2736.5
	24.9	134.8	3354.2	24.9	152.5	3794.9
	40.5	128.8	5211.2	40.5	145.8	5896
LSW-8FT-80-T1-F-SL	45	120	5400			
	60	120	7200			
	70	120	8400			
	80	120	9600			

DLC Chart

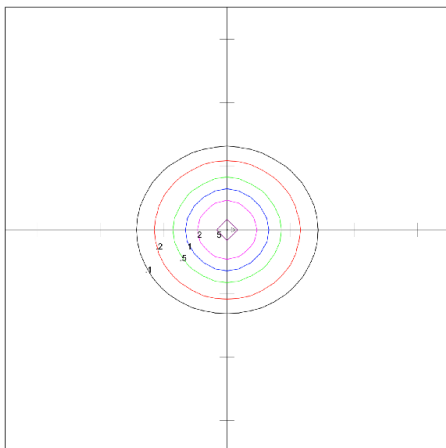
Model Number		Part Number	DLC ID	Part Number	DLC ID
LSW-2FT-30-T1-F-SL	10W	LSW-2FT-10-T1-F-[Blank,SL,S1]-Z	PLWNP99LPT1G	LSW-2FT-10-T1-F-SL-Z	PLBFZOU1LDI3
	15W	LSW-2FT-15-T1-F-[Blank,SL,S1]-Z	PLHDCTKNHBA6	LSW-2FT-15-T1-F-SL-Z	PLU4ZEBZ4IU2
	20W	LSW-2FT-20-T1-F-[Blank,SL,S1]-Z	PLHXH3JVRT2B	LSW-2FT-20-T1-F-SL-Z	PL7V4LVD2SCT
	30W	LSW-2FT-30-T1-F-[Blank,SL,S1]-Z	PLQL08BJSTZE	LSW-2FT-30-T1-F-SL-Z	PL6LNFNLQP4U
LSW-2FT-30-T1-C-SL	10W	LSW-2FT-10-T1-C-[Blank,SL,S1]-Z	PL73ZZZQ9THE	LSW-2FT-10-T1-C-SL-Z	PLBTW0HU78P7
	15W	LSW-2FT-15-T1-C-[Blank,SL,S1]-Z	PLM9TQIHXNGO	LSW-2FT-15-T1-C-SL-Z	PLOHT12ECIVC
	20W	LSW-2FT-20-T1-C-[Blank,SL,S1]-Z	PLYD7LPL0YTM	LSW-2FT-20-T1-C-SL-Z	PL2F135J6LM8
	30W	LSW-2FT-30-T1-C-[Blank,SL,S1]-Z	PLD4865FBLF9	LSW-2FT-30-T1-C-SL-Z	PL0KB7VZYT7N
LSW-4FT-40-T1-F-SL	12W	LSW-4FT-12-T1-F-[Blank,SL,S1]-Z	PLVT9F1NW2SC	LSW-4FT-12-T1-F-SL-Z	PLP0YYLYM6AJ
	18W	LSW-4FT-18-T1-F-[Blank,SL,S1]-Z	PLASV5FNATE7	LSW-4FT-18-T1-F-SL-Z	PL4LSG4M8A5G
	25W	LSW-4FT-25-T1-F-[Blank,SL,S1]-Z	PLGPEL8ATMB4	LSW-4FT-25-T1-F-SL-Z	PLQRDYTJQNE0
	40W	LSW-4FT-40-T1-F-[Blank,SL,S1]-Z	PLDQ4MRBPKLR	LSW-4FT-40-T1-F-SL-Z	PLYC78VYMR7Z
LSW-4FT-40-T1-C-SL	12W	LSW-4FT-12-T1-C-[Blank,SL,S1]-Z	PLP0YYLYM6AJ	LSW-4FT-12-T1-C-SL-Z	PLDDUO7SW3UH
	18W	LSW-4FT-18-T1-C-[Blank,SL,S1]-Z	PL4LSG4M8A5G	LSW-4FT-18-T1-C-SL-Z	PL6GZKSGR3B1
	25W	LSW-4FT-25-T1-C-[Blank,SL,S1]-Z	PLQRDYTJQNE0	LSW-4FT-25-T1-C-SL-Z	PL9Z35W0BTZG
	40W	LSW-4FT-40-T1-C-[Blank,SL,S1]-Z	PLYC78VYMR7Z	LSW-4FT-40-T1-C-SL-Z	PLUSVN1EKSXK
LSW-8FT-80-T1-F-SL	45W	not listed		not listed	
	60W	not listed		not listed	
	70W	not listed		not listed	
	80W	not listed		not listed	

Dimensions

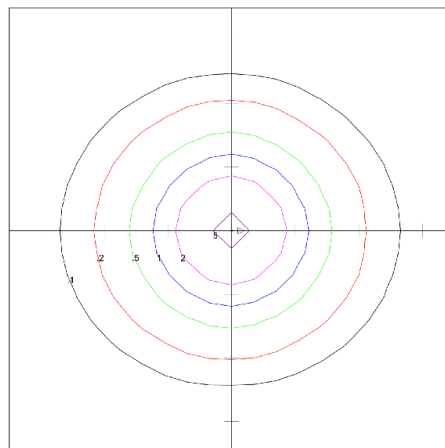
LSW



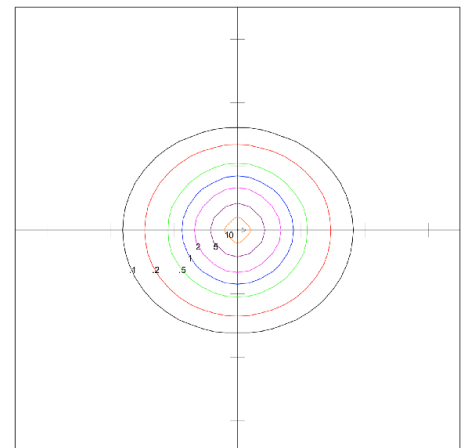
Photometrics



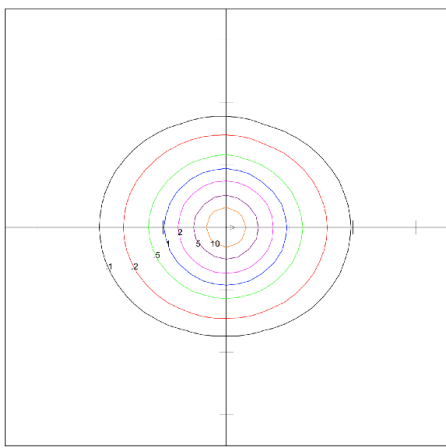
LSW-2FT-30-T1-F-SL @ 10W 3000K



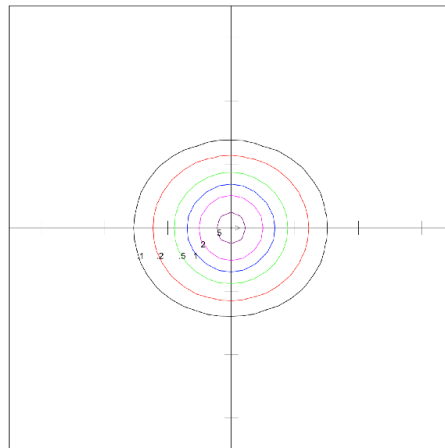
LSW-2FT-30-T1-F-SL @ 15W 3000K



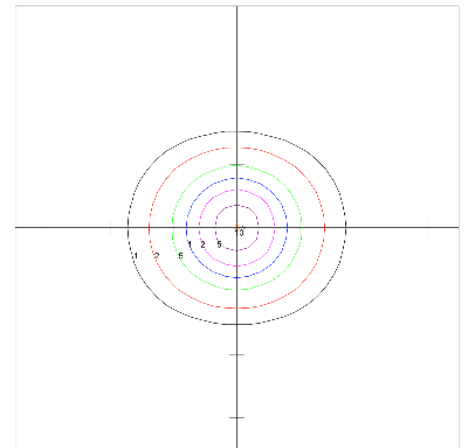
LSW-2FT-30-T1-F-SL @ 20W 3000K



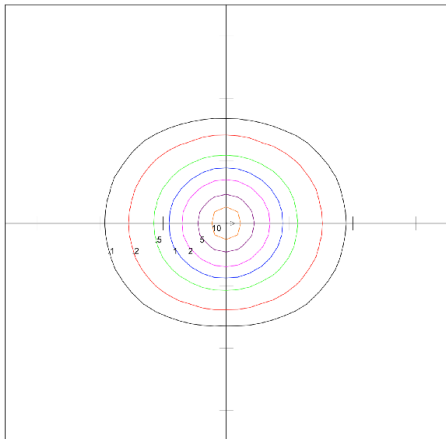
LSW-2FT-30-T1-F-SL @ 30W 3000K



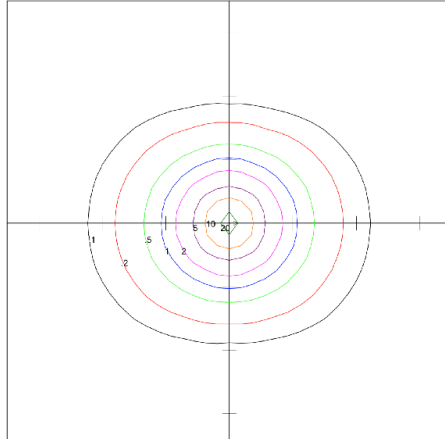
LSW-4FT-40-T1-F-SL @ 12W 3000K



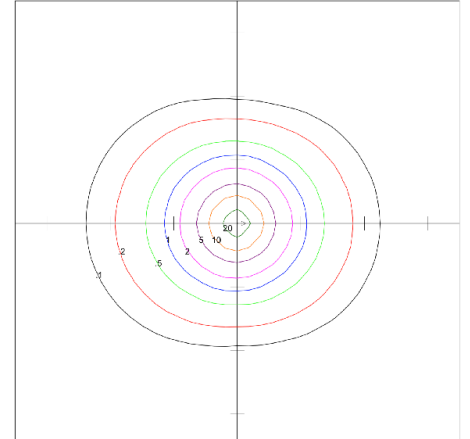
LSW-4FT-40-T1-F-SL @ 18W 3000K



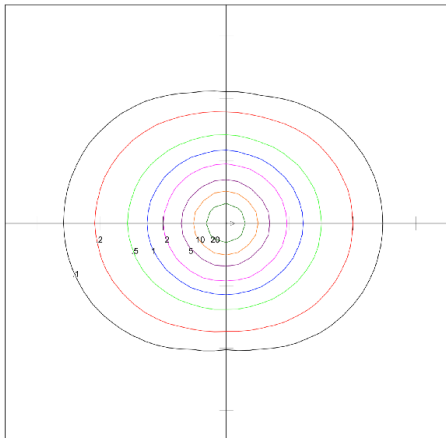
LSW-4FT-40-T1-F-SL @ 25W 3000K



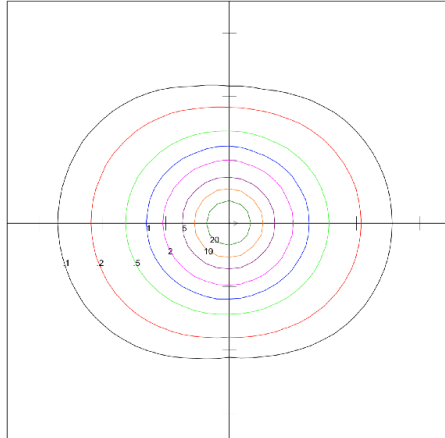
LSW-4FT-40-T1-F-SL @ 40W 3000K



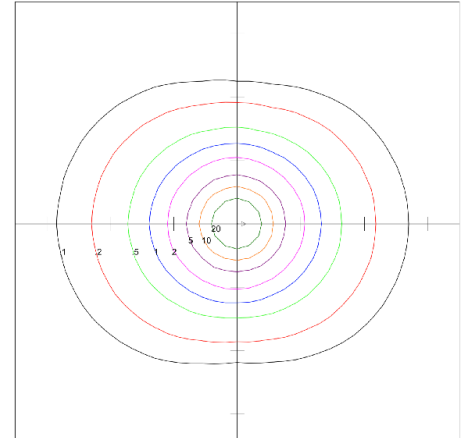
LSW-8FT-80-T1-F-SL @ 45W 3000K



LSW-8FT-80-T1-F-SL @ 60W 3000K



LSW-8FT-80-T1-F-SL @ 70W 3000K



LSW-8FT-80-T1-F-SL @ 80W 3000K

Electrical Accessories

EM-0825-010/105-P28

Emergency Driver Pack

UL listed emergency driver pack (with LiFePO4 battery) for indoor fixtures.

FEATURES

- | | |
|------------------|---------------------|
| • Input Voltage | 120-277VAC 50/60 Hz |
| • Output Power | 8W |
| • Output Voltage | 11-56VAC |
| • Emergency | 90 mins |

[Download the PDF of the EM-0825-010 here.](#)



BRI-810

Bi-Level Sensor



The BRI810-B-F is a moving object sensor with 360° detect range and 5.8GHz working frequency. It provides multi-level control based on motion and daylight contribution. Setting can be adjusted via remote controller.

FEATURES

- Rated Voltage 120-277VAC
- Rated Frequency 50/60 Hz
- Remote Range 33FT
- Ambient Temperature -40°C~+70°C

[Download the PDF of the BRI-810 here.](#)

BRI-819

Bi-Level and On/Off Sensor



The BRI819P indoor sensors provide multi-level occupancy control. All parameters are adjustable via a wireless configuration tool capable of storing and transmitting sensor profiles.

FEATURES

- Rated Voltage 120-277V
- Rated Frequency 50/60 Hz
- Remote Range 50ft
- Ambient Temperature -40°C~+70°C

[Download the PDF of the BRI-819 here.](#)