

LED Linear Strip Light

Product Description

Linear Strip- fixture has a beautiful round tube design for commercial applications, combines the latest in LED technology 130lm/w brightness, 50000hrs high efficient led driver, beautiful light distribution optic lense and various installation like surface mount or chain hanging installation, with a typical saving energy of 80%, ideal for replacing 130-200W MH/HPS.

Advantage

- ETL, DLC approved.
- Input voltage 120-277VAC.
- No UV or IR in the beam.
- Easy to install and operate.
- Energy saving, long lifespan.

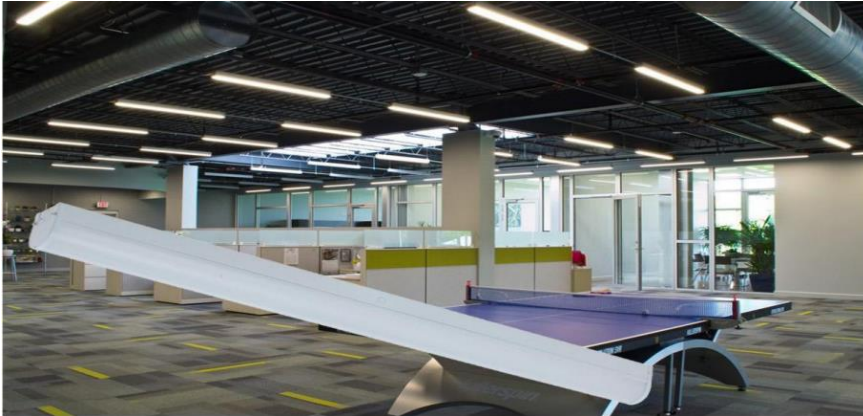
Light is soft and uniform, safe to eyes.

- Instant start, NO flickering, NO humming.
- Green and eco-friendly without mercury.
- Drivers come standard with 1-10V dimming leads capable of variable dimming down to 10%.



Applications

Shopping center mall or other commercial indoor ceiling areas, etc.

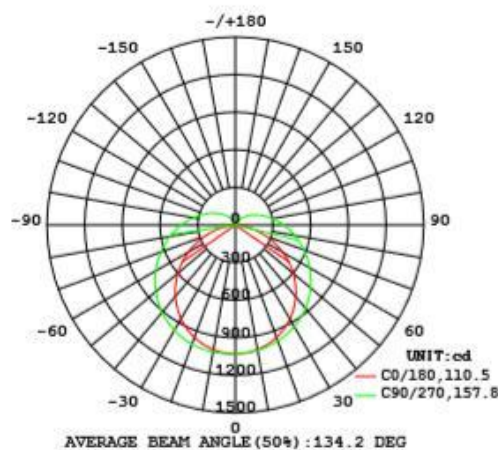


LED Linear Strip Light

Specifications

Model No.	LST4FT24W	LST4FT36W	LST8FT68W
Input Power	24W	36W	68W
Lumen	3120LM	4680LM	8840LM
Lumen Efficiency	130LM/W		
Color Temperature	3000K, 4000K, 5000K		
CRI	>80		
Viewing Angle	120 Degree		
Input Voltage	100-277VAC 50/60Hz		
PF	≥0.9		
THD	≤20%		
Driver Brand	China brand driver		
LED Brand	Zhongyang		
LED Type	SMD2835		
Dimmer	0-10V Dimming		
Housing	Aluminum+PC		
Housing Color	White		
Waterproof Rating	IP44		
Operating Temperature	-40°C TO 45°C		
Operating Humidity	20%-90% RH		
Storage Temperature	-40°C TO 80°C		
Storage Humidity	10%-95% RH		
Warranty Time	5 Years		

Photometrics



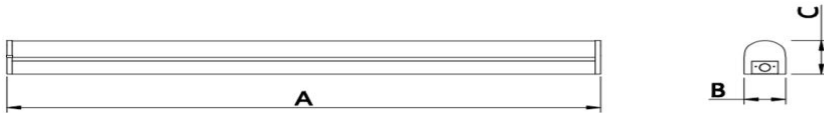
LED Linear Strip Light

Projected LED Lumen Maintenance

Operating hours	0	25000	50000
Lumen maintenance factor	1	0.91	0.8

Data references the extrapolated performance projections for the Linear Highbay LED platform in a 25°C ambient, based on 10,000 hours of LED testing (tested per IESNA LM-80-08 and projected per IESNA TM-21-11).

Dimensions



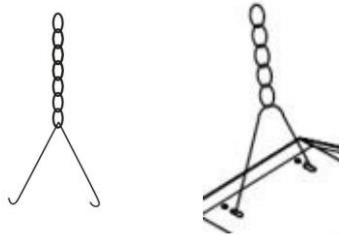
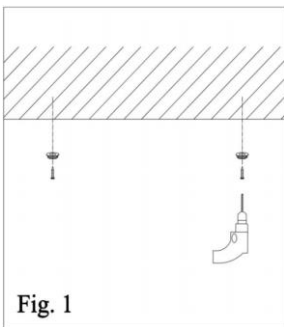
Model NO	A	B	C
LST4FT24W	46.1in	3.23in	3.68in
LST4FT36W	46.1in	3.23in	3.68in
LST8FT68W	95.98in	3.23in	3.68in

Installation instruction

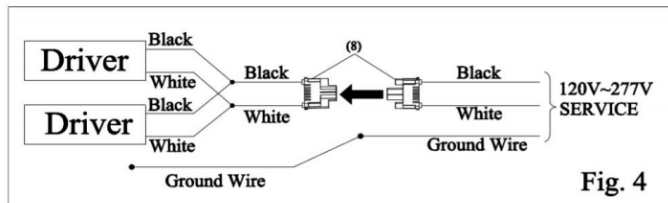
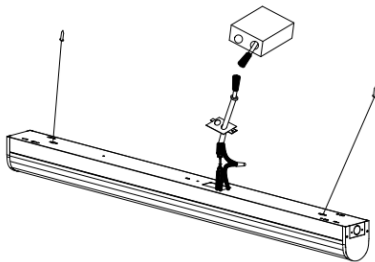
A. For Hanging

1. Fix the cooper nut into the ceiling by screw.

2. Lock the stainless wire into the cooper nut. Put the V-hook through fixture and link by chain.



3. Turn off the power, make the wire connection to the quick connector.



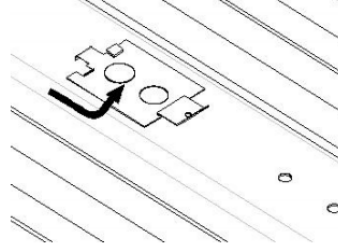
LED Linear Strip Light

B. For Ceiling Mounted

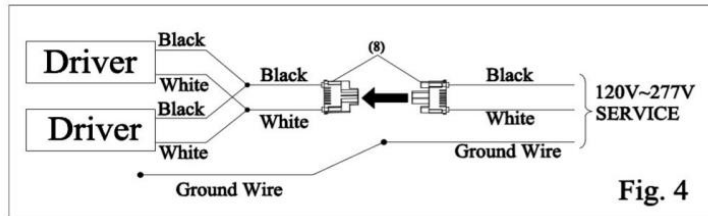
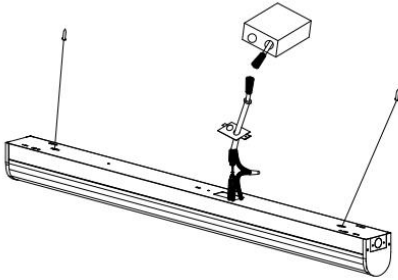
1. Fix the mounting holes into the ceiling by screw.



2. Remove the wiring cover.



3. Match the installation hole with ceiling screw, move left or right direction to make the fixture fixed.



Package

Model No	Carton Size (L×W×H)	Qty/Carton (pcs)	Net Weight (kg)	Gross Weight (kg)
LST4FT24W	48.8"X8.85"X8.0"	4	12.6	13.3
LST4FT36W	48.8"X8.85"X8.0"	4	12.6	13.3
LST8FT68W	97.6"×8.85"×8.0"	4	24.6	26.3

Warning

The installation and maintenance must be completed by electrician or professionals.

1. Please cut off the power before installation and maintenance.
2. The thermally insulating material is not allowed to cover the fixture.
3. Please keep away from the corrosive substance, and keep the fixture dry and clean.

After-sale Service

The product refers to electricians knowledge. Please don't disassemble it by yourself.

If any quality problem happens, please contact the factory for warranty details.

NOTE: Actual performance may differ as a result of end-user environment and application. All values are without notice.