

**LED T8 Lamp Ready Retrofit Strip
(2 Pack)**
RS SERIES



PRODUCT DESCRIPTION:

The MaxLite Lamp Ready Retrofit Strip provides a UL listed retrofit kit for industrial linear fixtures that is engineered to operate the latest single ended LED T8 lamps supplied separately. Able to be used to retrofit 4' linear fixtures or with a tandem bracket for 8' linear fixture, these retrofit kits come pre-wired for single ended operating LED lamps for contractor ready installation. These retrofit kits are packaged in 2 packs with a tandem bracket included for ease of installation.

Single ended T8 LED internal driver lamps (4') must be purchased separately from Maxlite for this product.

For the latest lamp offerings visit:

<https://www.maxlite.com/products/led-linear-t8-internal-drive>

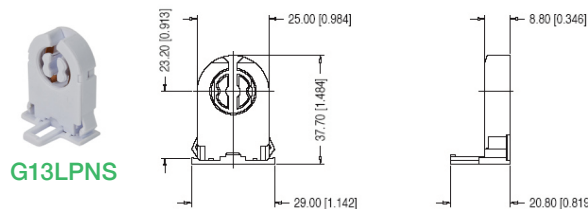
FEATURES:

- Sockets are wired in series via non-shunted sockets
- Retrofits into preexisting linear fixtures
- Tandem bracket can be used to turn two 4' sections into 8' retrofit
- Product packaged as 2 pack of 4ft strips for easier 8ft retrofit
- 5 year limited warranty

CONSTRUCTION:

- Engineered and UL rated to take up to 22w per set of lamp holders
- Wiring is 18 AWG solid to allow 120-277v operation where lamp specification allows
- Sockets rated to 660w , 600V, UL Listed

ORDERING INFORMATION			
ORDER NUMBER	MODEL	WATTS (NOMINAL)	DESCRIPTION
107768	RS-482XT8	44W	RETROFIT STRIP 48" 2 LAMP T8 LED 120-277V



NOTES:

1. This product is specifically engineered and listed for use with MaxLite Single Ended conductor LED lamps. Maximum lamp wattages cannot exceed stated levels without voiding warranty. Cannot use with any other brand of lamps.

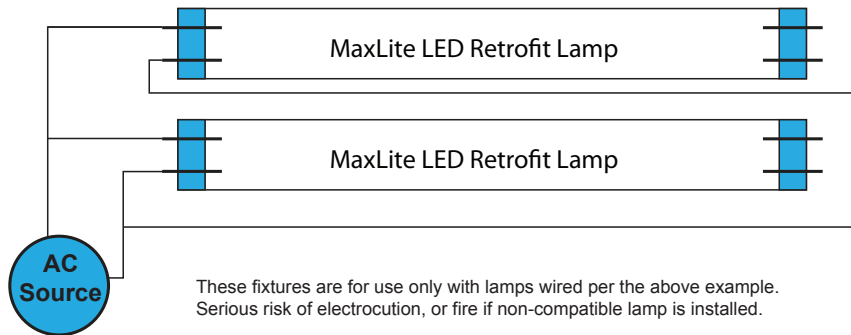
SPECIFICATIONS:

RS-482XT8

ITEM	SPECIFICATION	DETAILS
ELECTRICAL	Input Voltage	Max 22W Per Lamp
	Power Consumption	Per Lamp Spec
PHYSICAL	Dimension	6.5" x 48"
	Housing	Steel
	Operating Temperature	Per Lamp Spec
CERTIFICATION	Certification	UL for single ended LED lamps*
	Material Usage	RoHS compliant; no mercury
	Environment	Indoor / Damp
	Warranty	5 years

* See reference diagram adjacent. Must be followed

IMPORTANT WARNING:



These fixtures are for use only with lamps wired per the above example. Serious risk of electrocution, or fire if non-compatible lamp is installed.