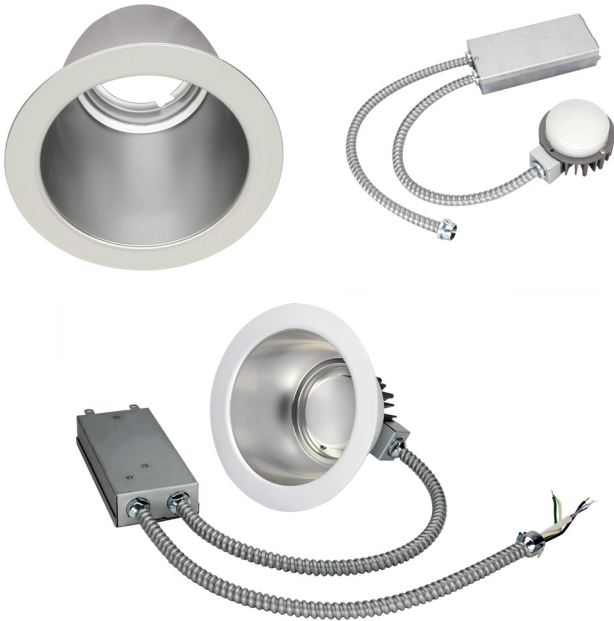


LED 10W COMMERCIAL RECESSED RETROFIT DOWNLIGHT

RRC SERIES



PRODUCT DESCRIPTION:

The RRC family of LED Downlight retrofits is a highly efficient option for upgrading existing Incandescent, Fluorescent and Metal Halide downlight fixtures to energy saving LED. The highly efficient design allows users to capture energy savings while also gaining the benefit of dimming. Compatible with many architectural and commercial downlight housings this retrofit can be used in most downlight applications. Suitable for Damp locations.

FEATURES:

- Mounts into existing recessed frame
- Supplied with optional retaining clips if existing frame does not have adequate friction springs to secure reflector.
- cULus listed for damp location use
- Universal voltage (120-277) (Triac 120V only)
- 0-10V dimming and Triac dimming drivers available
- CRI: >80
- A wide variety of CCTs available
- Five year limited warranty
- Integrated EM option available
- Type IC

CONSTRUCTION:

- Anodized aluminum reflector with a white trim ordered separately
- External driver for easy retrofit and maintenance



HOW TO ORDER:

1. Choose the light engine for desired CCT and dimming requirements.
2. Ensure that the light engines you have selected is compatible with the reflector size required by your project.

MODEL SELECTION (Full list of order codes on pg. 2)		Typical order example: RRXC10U30Z + RRC4-RFL			
FAMILY	LUMENS (NOMINAL)	VOLTAGE	CCT	DIMMING TYPE	EM OPTION
RRXC= Commercial Recessed Retrofit Downlight	*10= 900 lm @10W	U= Universal (120-277V)	30= 3000K 35= 3500K 40= 4000K	(OMIT)= Triac Dimming Z = 0-10V Dimming	(OMIT) = None EM = Integrated EM Option w/ 0-10V dimming

*Additional wattages available. Please contact your MaxLite representative for more information on the entire RRC Series.

*EM models begin with RRXC12

*EM option not Energy Star qualified

SPECIFICATIONS:

	ENGINE	RRXC10U40Z	RRXC10U40Z	RRXC10U40Z	RRXC10U40Z
	REFLECTOR	RRC4-RFL	RRC6-RFL	RRC8-RFL	RRC9-RFL
ITEM	SPECIFICATION	DETAILS			
GENERAL PERFORMANCE	Power Consumption (W)	9.6 W	9.6 W	9.6 W	9.6 W
	Lumens Delivered (lm)	838 lm	882 lm	866 lm	880 lm
	Efficacy (lm/W)	87 lm/W	92 lm/W	90 lm/W	92 lm/W
	Color Temperature	3000K, 3500K, 4000K			
	L70 Lifetime (hours)	50,000			
	Color Consistency	Proprietary binning for uniform color, SDCM <4			
	CRI	>80			
ELECTRICAL	Power Factor	≥0.9			
	Input Voltage	120-277V (Triac 120V only)			
	Compatible Dimmers	Compatible with 0-10V dimmers. For Triac dimming option, see list of compatible dimmers below.			
PHYSICAL	Weight	2 lbs			
	Mounting	Mounts into existing recessed frame			
	Operating Temperature	0° – 104° F			
	Humidity	20% - 85% RH, non-condensing			
CERTIFICATION	Certification	cULs Classified, FCC, Energy Star			
	Material Usage	RoHS compliant; no mercury			
	Environment	Indoor Damp/ Type IC			
	Warranty	5 years			

* CAUTION: A light engine should only be used with a reflector that is listed as compatible. Any other engine/reflector pairing is not covered by this product's UL Listing, and could be hazardous!

* Calculated data for 4000K light engines

ENGINE ORDERING:

ORDER CODE	MODEL	CCT	DIMMING
1410045	RRXC10U30	3000K	Triac
14099678	RRXC10U35	3500K	
1410048	RRXC10U40	4000K	
1410046	RRXC10U30Z	3000K	0-10V
100351	RRXC10U35Z	3500K	
1410049	RRXC10U40Z	4000K	
14099670	RRXC12U30ZEM	3000K	
14099671	RRXC12U35ZEM	3500K	
14099672	RRXC12U40ZEM	4000K	

REFLECTOR ORDERING:



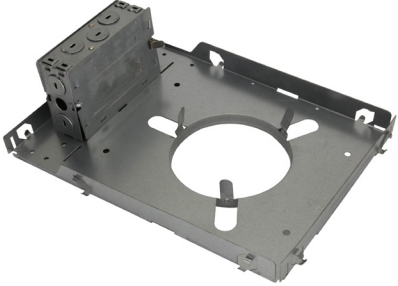

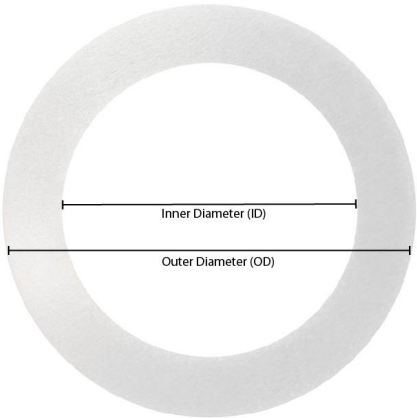
Heatsink adds 1 1/2" to overall height

ORDER CODE	REFLECTOR MODEL NUMBER	REFLECTOR SIZE	
1410090	RRC4-RFL	4"	
1410091	RRC6-RFL	6"	
1410092	RRC8-RFL	8"	
1410093	RRC9-RFL	9"	

COMPATIBLE TRIAC DIMMERS:

MFG.	MODEL NUMBER
Lutron	DVA DVELV
Lutron	LGCL-153P
Lutron	S-600P
Lutron	DVCL-253P
Lutron	DV-600P
Lutron	SCL-153P
Lutron	SELV-300P
Lutron	IPL06
Lutron	6673-P

ACCESSORIES:

ORDER CODE	MODEL	DESCRIPTION	PRODUCT IMAGE
72910	RCF4	4" Commercial Recessed Frame	
72912	RCF6	6" Commercial Recessed Frame	
72914	RCF8	8" Commercial Recessed Frame	
72909	RAF4	4" Architectural Recessed Frame	
72911	RAF6	6" Architectural Recessed Frame	
72913	RAF8	8" Architectural Recessed Frame	
14099683	RR-XRING4	4" Trim Extender ID:4.8", OD: 6.7"	
14099684	RR-XRING6	6" Trim Extender ID:6.24", OD: 8.75"	
14099685	RR-XRING8	8" Trim Extender ID:7.84", OD: 10.40"	
14099686	RR-XRING9	9" Trim Extender ID:9.50", OD: 11.90"	