

Product datasheet

LED Temporary work Light

80W/100W/120W/150W



Can choose add reflectors



Applications

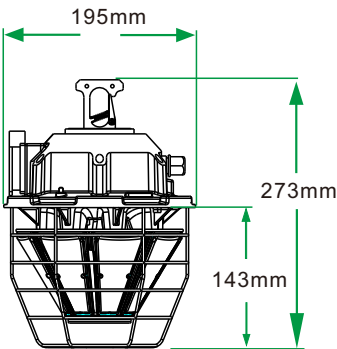


Product datasheet

Features

T style

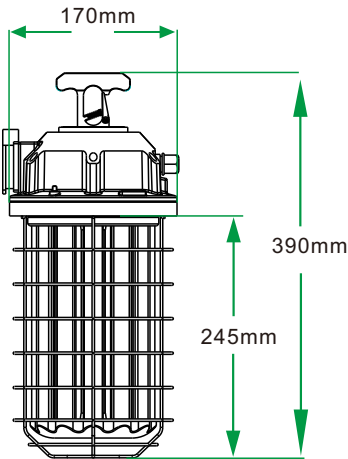
- 360-degree luminescence, no fan design, adopt efficient ADC12 die-cast aluminum plus surface treatment to accelerate heat dissipation.
- Wide pressure isolating constant current power supply, anti-surge protection of 6000V. The lamp can withstand sudden high voltage.
- Provide socket connector, which can connect 8-10 lamps in series at the same time.
- It can be used as HIGH BAY with spotlights and stainless steel protective cover.
- Use waterproof gasket between lamp cup PC cover, power supply and lamp body connection, which can effectively waterproof, dustproof and anti-mosquito.
- Suitable for outdoor wet or wet places. IP65 waterproof rating.
- Stainless steel hooks are more convenient to use.





Features

C style

- 360 degree luminescence, no fan design. Adopt high heat conduction and portable stamping aluminum to accelerate heat dissipation.
- Wide pressure isolating constant current power supply, anti-surge protection of 6000V. The lamp can withstand sudden high voltage.
- Provide socket connector, which can connect 8 lamps in series at the same time.
- It can be used as HIGH BAY with spotlights and stainless steel protective cover.
- Suitable for outdoor wet or humid places. IP64 waterproof rating.
- Stainless steel hooks are more convenient to use.



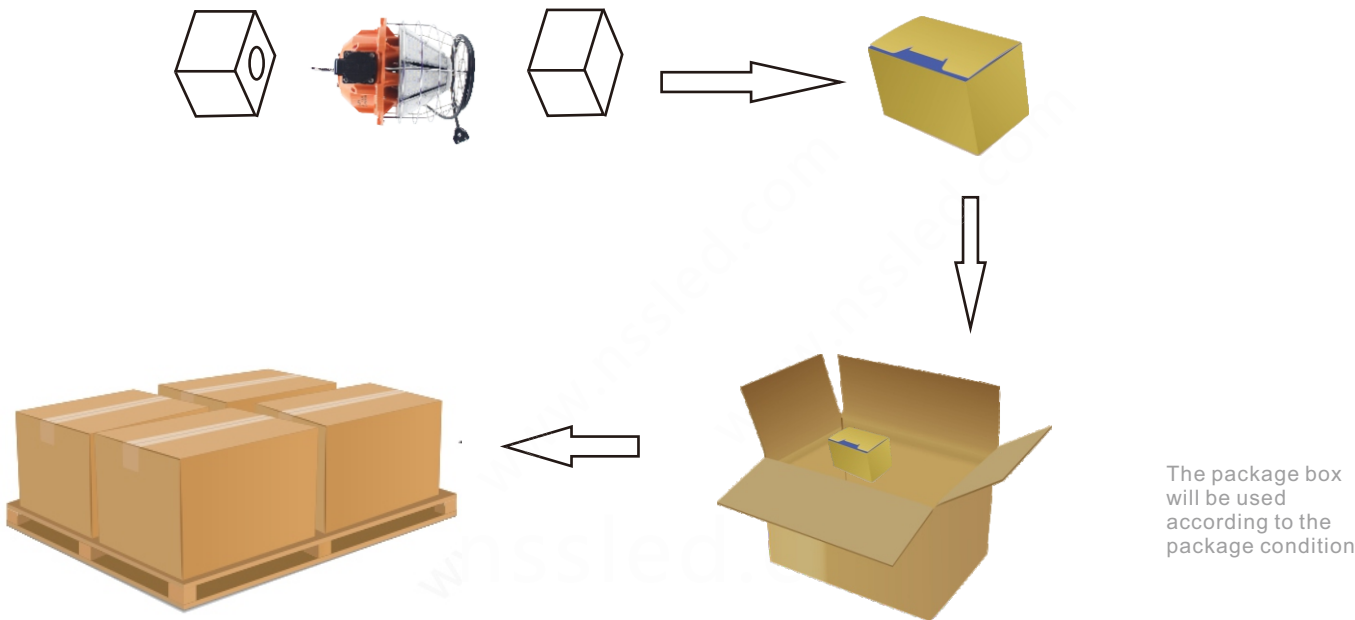
Parameter

Model	Power	Lumens (LM)	Voltage	Base	CCT(K)	Dim.	CRI	SMD	Weight		
NS-TWL80W-01-T	80W	10000LM ±10%	AC100-277V	Pothead	2500-7000K	φ195*273 mm φ7.68*10.75 in	>80	2835	2.4Kg	Y	Y
NS-TWL100W-01-T	100W	12500LM ±10%	AC100-277V	Pothead	2500-7000K	φ195*273 mm φ7.68*10.75 in	>80	2835	2.4Kg	Y	Y
NS-TWL80W-01-C	80W	10000LM ±10%	AC100-277V	Pothead	2500-7000K	φ170*332 mm φ6.70*13.07 in	>80	2835	2.2Kg	Y	N
NS-TWL100W-01-C	100W	12500LM ±10%	AC100-277V	Pothead	2500-7000K	φ170*332 mm φ6.70*13.07 in	>80	2835	2.2Kg	Y	N
NS-TWL120W-01-C	120W	15000LM ±10%	AC100-277V	Pothead	2500-7000K	φ170*390 mm φ6.70*15.35 in	>80	2835	2.4Kg	Y	Y
NS-TWL150W-01-C	150W	18750LM ±10%	AC100-277V	Pothead	2500-7000K	φ170*390 mm φ6.70*15.35 in	>80	2835	2.4Kg	Y	Y

Product datasheet

Logistical Data

Package

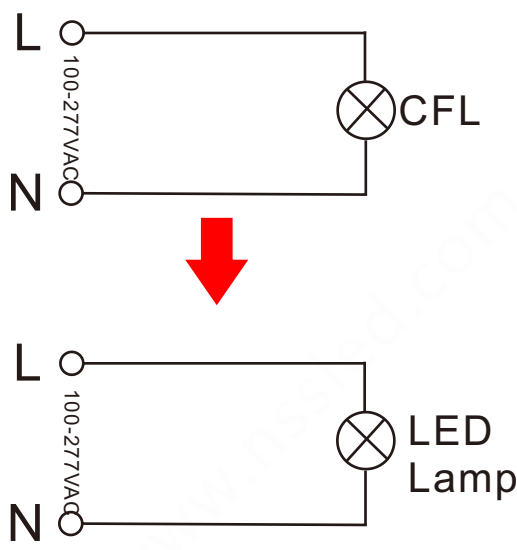


Model	Packaging unit (Pieces/Unit)	Dimensions	Gross weight	Volume
NS-TWL80W-01-T	Small box 1	31*24*24.5cm	2.6Kg	0.018m ³
NS-TWL100W-01-T	Outer Carton 4	32.5*49.5*51cm	12.5Kg	0.082m ³
NS-TWL80W-01-C	Small box 1	37*21.5*22cm	2.4Kg	0.018m ³
NS-TWL100W-01-C	Outer Carton 4	38.5*44.5*46cm	12Kg	0.079m ³
NS-TWL120W-01-C	Small box 1	42.5*21.5*22cm	2.6Kg	0.02m ³
NS-TWL150W-01-C	Outer Carton 4	44*44.5*46cm	12.5Kg	0.09m ³

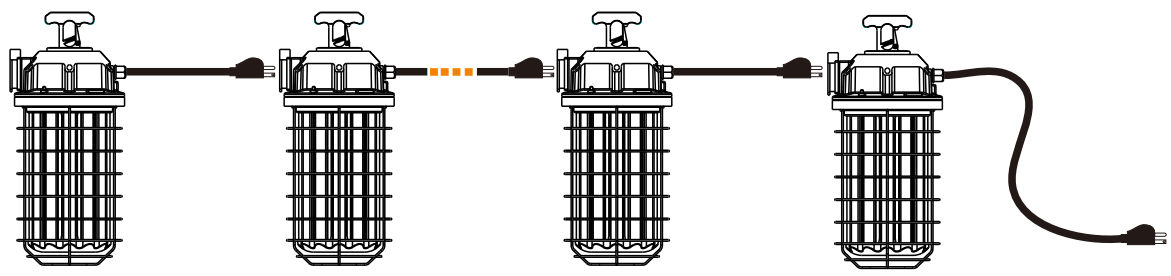
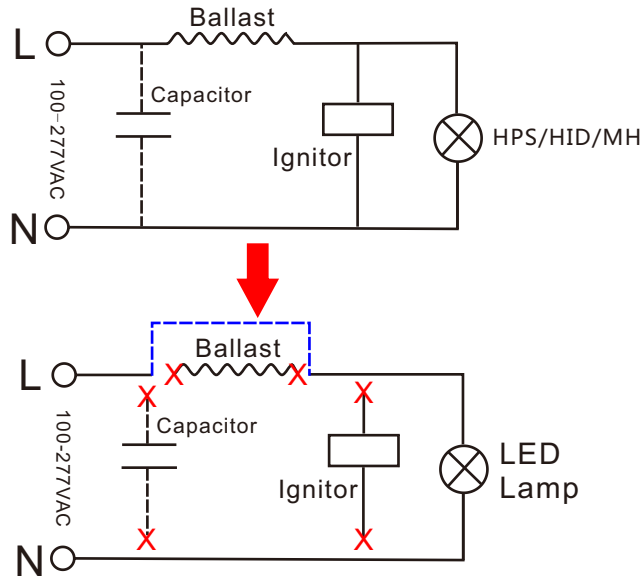
Product datasheet

Installation

Replace CFL



Replace HPS/HID/MH



- * which can connect 8 lamps in series at the same time.
- * Input plugs line standard length is 1.5 M. (can be extended length) upon request.



LED Temporary work Light

80W
100W
120W
150W

=

HPS/HID/MH

250W
300W
360W
450W

