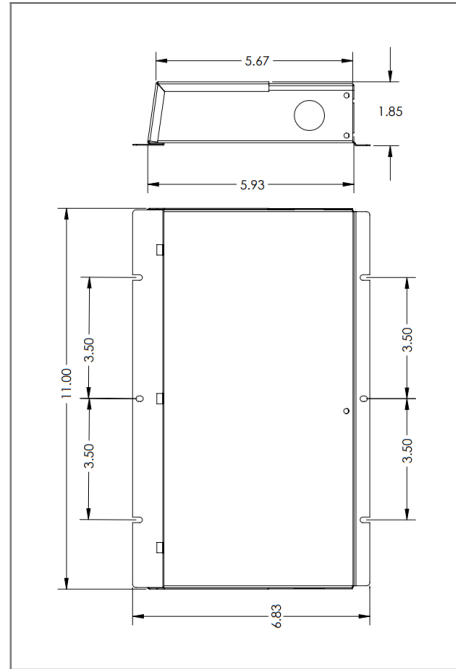


MLE300C2-12UD

Class 2 Electronic UNIV 5 in 1 dimming
 Outdoor Black Powder Coated Steel Enclosure
 Multi Circuit: **12VDC 800Hz**
 Total Wattage: **300W max**
 Input Voltage: **110-277V 50/60Hz**



Conforms to UL STD. 8750
 Certified to CSA
 STD. C22.2 № 250.13
 model MLE300C2-12DC-UD



Transformer

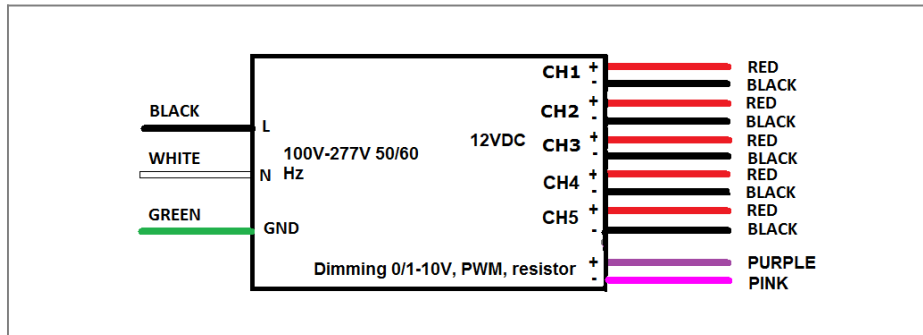
Dimmable with triac forward and reverse phase, 0/1-10V , resistor, PWM
 Temperature class B(130°C)
 Input leads are 18AWG 600V
 Output leads are 16AWG 300V
 Leads max. operational temperature is 105°C per circuit

Housing

The actual transformer 300W is encapsulated in the enclosure
 The enclosure is Black Powder Coated Steel, NEMA 3R rated
 Wiring compartment has 10 knockouts sizes for 3/8 inch screw cable connectors
 Enclosure Temperature does not exceed 70°C at 45°C ambient and fully loaded
 Dimensions (inch): H = 6.83, W = 11, D = 1.85
 Weight (LBs): 4.4

Electrical Parameters

Input Voltage:	110-277V 50/60Hz	
Max. input current at full load:	3A	
Output voltage without load:	12.1VDC	
Output voltage fully loaded:	12VDC	
Max. Total Wattage:	300W	Max. per circuit: 60W
Max. Output Current:	5A per circuit.	
Efficiency:	90%	
Load regulation:	1%	
Ripple:	5%	



Mailing Address: 646 Flinn Ave. Unit B, Moorpark , CA 93021 Tech support: Arik Nirenberg phone: 818-904-3309
Fax: 818 904 3327 info@emcod.com techsupport@emcod.com