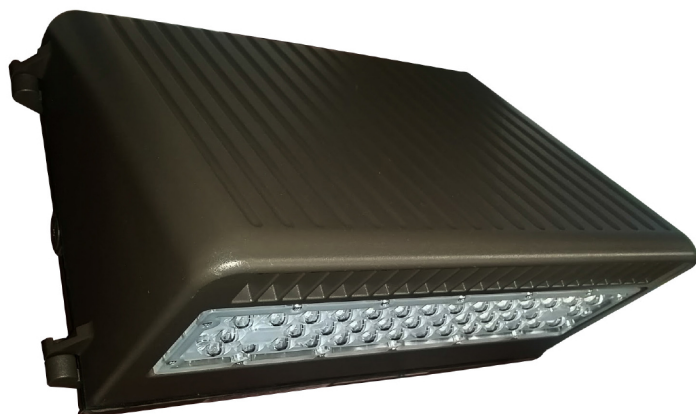


LWP2



TECHNICAL SPECIFICATIONS:

- :: Full cutoff optics, dark sky compliant
- :: Die-cast aluminum with powder coat finish (Dark Bronze)
- :: Tempered glass lens
- :: 120~277V
- :: Includes mounting hardware
- :: Driver located in isolated compartment for improved thermal management
- :: Chip: CREE CXA LED
- :: CRI: >80
- :: Power Factor: 95%
- :: Operating Temp: -4°F to 104°F
- :: 70,000 hour rated life
- :: 7-year warranty
- :: Suitable for Wet Locations, IP54

APPLICATIONS:

- :: Ideal for general site lighting, alleys, loading docks, doorway, pathway and parking areas.
- :: Replace existing HID flood lights/ wall packs
- :: Great for use with motion sensors or other instant on/off controls



LED FULL CUTOFF WALL PACKS

CATALOG NO.	WATTS	LUMENS	COLOR TEMP	REPLACEMENT RANGE	EQUIVALENCY	DIMENSIONS
LWP2-50-CW	50W	5700LM	CW 5000K	175~250 MH	250 MH	6-1/2" (w) x 8" (H) x 4" (D)
LWP2-50-WW	50W	5600LM	WW 3500K	175~250 MH	250 MH	
LWP2-80-CW	80W	9100LM	CW 5000K	320~400 MH	400 MH	
LWP2-80-WW	80W	8700LM	WW 3500K	320~400 MH	400 MH	

