

# Slim Recessed Linear

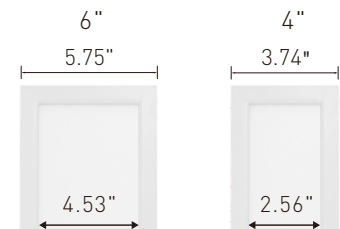
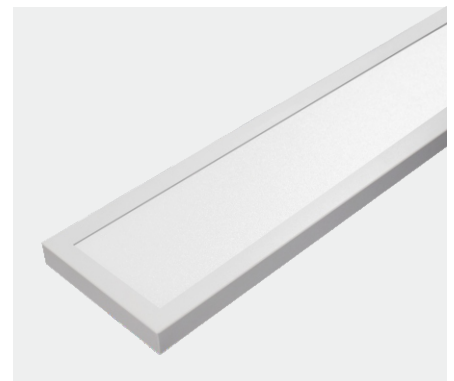
Recessed | Architectural LED Linear



The revolutionary LR series offers popular 4" and 6" widths, with lengths up to 8 feet, delivering powerful linear lighting for a variety of applications. Thanks to its wattage-selectable and CCT-adjustable technology, inventory management becomes a breeze—fulfilling more orders with fewer SKUs! Compatible with most ceiling types, the LR series is your go-to solution for offices, schools, hospitals, corridors, light industrial spaces, or anywhere stylish linear lighting is desired.

## Feature

- Slim and linear design
- 2ft, 4ft and 8ft lengths, up to 1000lm/ft
- 0-10V dimming, dim to 10% or 1% options
- Available in 4", 6" width
- Wattage selectable (50%/75%/100%)
- CCT adjustable from 3000K, 3500K and 4000K



## PERFORMANCE

| Width | Length | Wattage Selectable | Efficacy@4000K    | Lumen@4000K  |
|-------|--------|--------------------|-------------------|--------------|
| 4inch | 2ft    | 20W/15W/10W        | 85lm/w,850lm/ft   | Up to 1700lm |
|       | 4ft    | 40W/30W/20W        | 90lm/w,900lm/ft   | Up to 3600lm |
|       | 8ft    | 80W/60W/40W        | 90lm/w,900lm/ft   | Up to 7200lm |
| 6inch | 2ft    | 20W/15W/10W        | 100lm/w,1000lm/ft | Up to 2000lm |
|       | 4ft    | 40W/30W/20W        | 100lm/w,1000lm/ft | Up to 4000lm |
|       | 8ft    | 80W/60W/40W        | 100lm/w,1000lm/ft | Up to 8000lm |

Lumen output may vary by ±5% based on different CCT and wattage settings. Actual wattage may also vary by ±5%.

# Slim Recessed Linear

Recessed | Architectural LED Linear





## PRODUCT ORDERING GUIDE

Example: LR24-TWT

| LR                         |  |             | TWT                                     |
|----------------------------|--|-------------|---|
| Product Series             | Length   | Width       | CCT                                     |
| LR<br>Slim Recessed Linear | 2<br>2FT, 20W/15W/10W Selectable<br>Up to 1700lm for 4inch width, 2000lm for 6inch width | 4<br>4 inch | TWT<br>CCT adjustable 3000K/3500K/4000K |
|                            | 4<br>4FT, 40W/30W/20W Selectable<br>Up to 3600lm for 4inch width, 4000lm for 6inch width | 6<br>6 inch |   |
|                            | 8<br>8FT, 80W/60W/40W Selectable<br>Up to 7200lm for 4inch width, 8000lm for 6inch width |             |   |

\*Make to Order means additional cost and/or lead time on customized fixtures may apply. Some fixtures require an MOQ. Please contact your sales rep for more information.

## OPTIONAL ORDERING GUIDE

| Optional 0-10V Dimming   | Optional Function   |
|--|---|
| <b>D10</b> QuickShip<br>110-277V AC, Dims to 10% (Standard)<br><i>Tested Dimmers: Lutron® Diva-Dvtv, Leviton® IP-710-DL.</i> | <b>EME</b> QuickShip<br>Emergency Function<br>(Only external 8w or 25w LED emergency driver with standard indicator available and need field-installed.)    |
| <b>D01</b> QuickShip<br>110-277V AC, Dim to 1%   | <b>OCC</b> Make to Order<br>Sensor Function*<br>We can provide a factory-installed integrated sensor system for multi-level control based on motion and/or daylight contribution with BR1810BI-level & daylight harvest microwave sensor from SHARKWARD. For more info or spec sheet, please contact sales.  |

## PRODUCT PERFORMANCE

### Construction

Extruded aluminum housing

### Electrical

|               |  |
|---------------|--|
| LED Driver    | External   |
| Dimming       | Powered by high efficiency LED driver, with a standard 0-10V dimming which continuous dims to 10% that works with many types of controls. Tested Dimmers: Lutron® Diva-Dvtv, Leviton® IP-710-DL. Dim to 1% is available. |
| THD           | <20%   |
| Power Factor  | >0.9   |
| Input Voltage | Standard electronic driver is UL recognized and available for 110-277V AC.   |

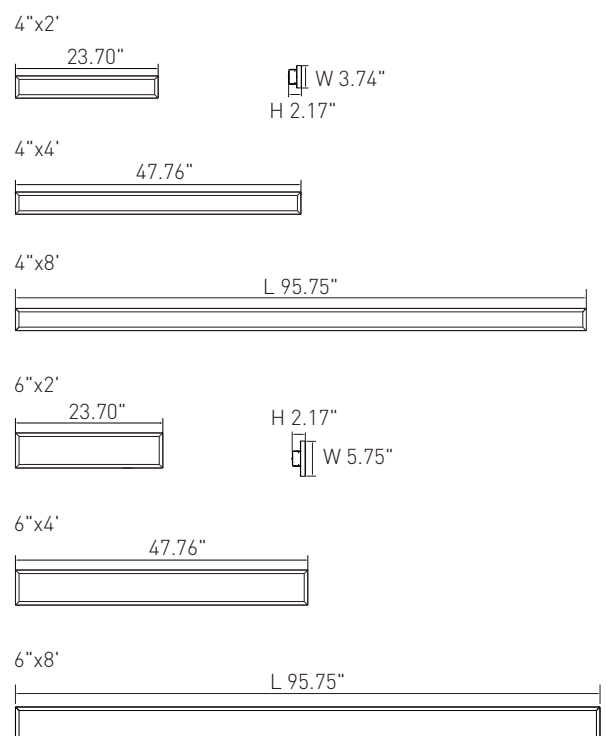
### LED System

|                    |  |
|--------------------|--|
| CRI                | Minimum 80 color rendering index   |
| CCT                | CCT adjustable from 3000K, 3500K and 4000K with a great color consistency.   |
| LED                | life Minimum 50,000h with 87.8% of lumen maintenance in 25°C ambient temperature, in compliance with IES LM-80 testing measurements. |
| Thermal Management | Aluminum housing acting as the heat sink to maximize life.   |

### Approvals

- cULus listed for damp locations
- 5-year Limited Warranty

## DIMENSION

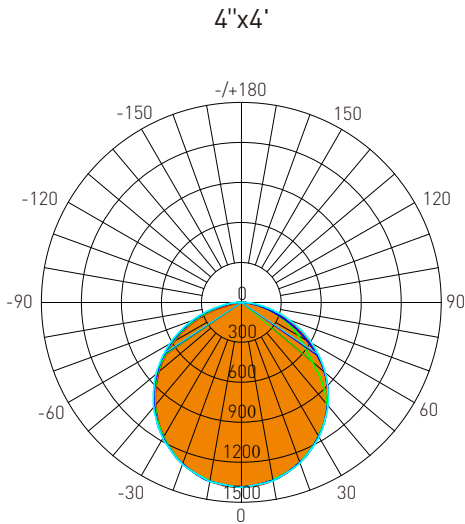


# Slim Recessed Linear

Recessed | Architectural LED Linear



## DISTRIBUTION DIAGRAM



AVERAGE BEAM ANGLE(50%): 110.2°

Test Number: LR44-35E  
 Lumens: 3773.4 Lm  
 Watts: 40 W  
 LPW: 94.34 Lm/W  
 CCT: 3500K

UNIT: cd  
 — C0/180,111.1°  
 — C30/210,105.7°  
 — C60/240,111.3°  
 — C90/270,112.8°

Zonal Flux Diagram

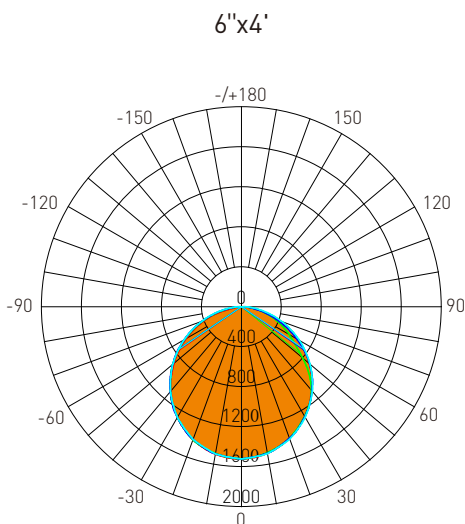
| τ  | C0    | C45   | C90   | C135  | C180  |
|----|-------|-------|-------|-------|-------|
| 5  | 1378  | 1372  | 1373  | 1374  | 1381  |
| 10 | 1357  | 1352  | 1359  | 1356  | 1362  |
| 15 | 1324  | 1322  | 1322  | 1328  | 1331  |
| 20 | 1279  | 1274  | 1284  | 1279  | 1287  |
| 25 | 1224  | 1223  | 1225  | 1226  | 1232  |
| 30 | 1159  | 1158  | 1166  | 1158  | 1165  |
| 35 | 1085  | 1084  | 1088  | 1074  | 1089  |
| 40 | 1002  | 1004  | 1010  | 958.2 | 1003  |
| 45 | 912.5 | 885.3 | 916.5 | 780.5 | 909.0 |
| 50 | 815.0 | 735.3 | 822.7 | 609.3 | 807.8 |
| 55 | 711.5 | 600.0 | 716.0 | 490.2 | 698.2 |
| 60 | 599.9 | 498.1 | 609.2 | 394.6 | 581.3 |
| 65 | 481.9 | 403.6 | 494.7 | 307.4 | 457.1 |
| 70 | 361.4 | 305.2 | 380.1 | 221.3 | 331.1 |
| 75 | 234.4 | 211.9 | 270.0 | 140.1 | 168.8 |
| 80 | 131.0 | 122.2 | 159.9 | 75.20 | 59.38 |
| 85 | 28.69 | 51.55 | 81.29 | 29.13 | 10.88 |
| 90 | 1.227 | 4.243 | 2.669 | 2.701 | 1.005 |

Zonal Lumens

| τ     | φ total |
|-------|---------|
| 0-5   | 32.98   |
| 5-10  | 130.7   |
| 10-15 | 289.8   |
| 15-20 | 504.6   |
| 20-25 | 767.9   |
| 25-30 | 1070    |
| 30-35 | 1402    |
| 35-40 | 1751    |
| 40-45 | 2104    |
| 45-50 | 2443    |
| 50-55 | 2757    |
| 55-60 | 3038    |
| 60-65 | 3279    |
| 65-70 | 3472    |
| 70-75 | 3616    |
| 75-80 | 3710    |
| 80-85 | 3759    |
| 85-90 | 3773    |

Luminance cd/(m2)

| G(DEG) | C0/180 | C90/270 |
|--------|--------|---------|
| 85     | 4286   | 12145   |
| 80     | 9823   | 11991   |
| 75     | 11791  | 13583   |
| 70     | 13759  | 14470   |
| 65     | 14849  | 15240   |
| 60     | 15624  | 15865   |
| 55     | 16153  | 16254   |
| 50     | 16510  | 16666   |
| 45     | 16803  | 16877   |



AVERAGE BEAM ANGLE(50%): 110.2°

Test Number: LR46-35E  
 Lumens: 4180.4 Lm  
 Watts: 40 W  
 LPW: 104.51 Lm/W  
 CCT: 3500K

UNIT: cd  
 — C0/180,110.8°  
 — C30/210,107.0°  
 — C60/240,111.2°  
 — C90/270,111.8°

Zonal Flux Diagram

| τ  | C0    | C45   | C90   | C135  | C180   |
|----|-------|-------|-------|-------|--------|
| 5  | 1513  | 1507  | 1508  | 1510  | 1518   |
| 10 | 1489  | 1485  | 1494  | 1491  | 1498   |
| 15 | 1452  | 1452  | 1452  | 1461  | 1464   |
| 20 | 1402  | 1399  | 1411  | 1408  | 1415   |
| 25 | 1340  | 1341  | 1345  | 1349  | 1354   |
| 30 | 1268  | 1269  | 1278  | 1271  | 1280   |
| 35 | 1185  | 1186  | 1192  | 1177  | 1195   |
| 40 | 1094  | 1098  | 1105  | 1067  | 1100   |
| 45 | 995.5 | 978.4 | 1002  | 914.6 | 995.9  |
| 50 | 889.3 | 838.9 | 898.4 | 746.0 | 884.3  |
| 55 | 777.1 | 689.3 | 783.0 | 605.3 | 764.9  |
| 60 | 659.0 | 562.4 | 667.6 | 484.8 | 639.7  |
| 65 | 536.6 | 454.9 | 546.6 | 376.9 | 511.3  |
| 70 | 413.3 | 349.1 | 425.5 | 276.8 | 382.3  |
| 75 | 287.0 | 244.2 | 309.4 | 186.1 | 238.8  |
| 80 | 164.7 | 144.4 | 193.3 | 107.6 | 79.40  |
| 85 | 40.56 | 63.05 | 98.59 | 46.12 | 17.81  |
| 90 | 3.175 | 4.753 | 3.887 | 2.886 | 0.5494 |

Zonal Lumens

| τ     | φ total |
|-------|---------|
| 0-5   | 36.22   |
| 5-10  | 143.5   |
| 10-15 | 318.2   |
| 15-20 | 553.9   |
| 20-25 | 842.6   |
| 25-30 | 1174    |
| 30-35 | 1537    |
| 35-40 | 1917    |
| 40-45 | 2303    |
| 45-50 | 2677    |
| 50-55 | 3025    |
| 55-60 | 3337    |
| 60-65 | 3605    |
| 65-70 | 3824    |
| 70-75 | 3990    |
| 75-80 | 4102    |
| 80-85 | 4162    |
| 85-90 | 4180    |

Luminance cd/(m2)

| G(DEG) | C0/180 | C90/270 |
|--------|--------|---------|
| 85     | 3368   | 8185    |
| 80     | 6864   | 8054    |
| 75     | 8024   | 8650    |
| 70     | 8745   | 9002    |
| 65     | 9187   | 9358    |
| 60     | 9536   | 9662    |
| 55     | 9803   | 9878    |
| 50     | 10011  | 10113   |
| 45     | 10188  | 10249   |