

APPLICATION:

Application for workshops, factories, office, shopping malls, large supermarkets, exhibition halls, warehouses, homes, hotels, schools and more.

FEATURES:

- External driver – male and female connection
- Easy to fix by magnet and screws
- Eco-friendly without mercury

DIMENSIONS:

Magnet Troffer Retrofit Kit 2X4 50W Spec

LOD-MTRT-4FT50WX2 4000K

LOD-MTRT-4FT50WX2 5000K



SPECIFICATIONS:

SPECIFICATION	Details	
Model	LOD-MTRT-4FT50WX2 4000K	LOD-MTRT-4FT50WX2 5000K
Input Wattage (W)	50W	
Lumens Delivered (LM)	6,262.74LM	6,482.73 LM
Efficacy (LM/W)	123.09LM/W	127.4LM/W
CRI	83.6	82.5
Lifespan	50,000 hours	
Color Temperature	4,000K	5,000K
Wattage Equivalent	Replaces 2 x 4 panel	
Dimmable	Yes	
Input Voltage	AC100-277V	
Power Factor	0.894	0.99
THD	15.15%	15.15%
Housing	Aluminum	
Lens	Frosted	
Mounting	Magnetic Screw	
Size	43.31" x 21.26" x 0.69"	
Certification	DLC, ETL, FCC, CE RoHS, TUV, ISO9001	
Operating Temperature	-20°C to 50°C (-4°F to 122°F)	
Environment	Indoor	
Warranty	5 years	

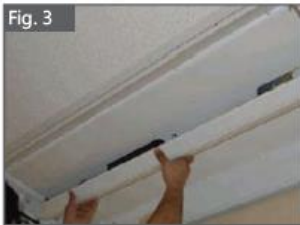




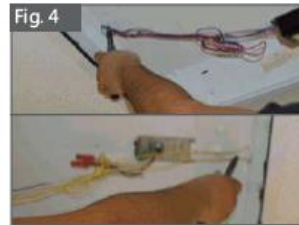
Step 1:
Cut off the power of the troffer retrofit kit before any operation
Pull the movable bolt at the edge of the troffer retrofit kit and open the cover.



Step 2:
Take out the fluorescent tubes one by one.



Step 3:
Open the top cover of wiring box.



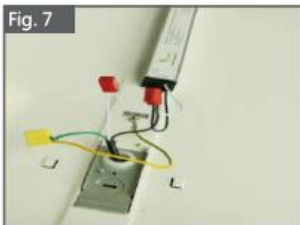
Step 4:
Dismantle the ballast and circuit of the fluorescent tubes .



Step 5:
A. Take out the LED Magnet Tubes from the package box. B. Stick the LED Tubes onto the troffer. Adjust its position to make sure they are placed horizontally in proper position.



Step 6:
Take out the LED driver and screws we provide; fix the drivers onto the position of the previous ballast.



Step 7:
Connection mode of LED Driver' s Input Wire(See Fig. 7):
White: Live Wire
Black: Null Wire
Yellow/Green: Ground Wire



Step 8:
Connect the Connection Wire to the OUTPUT terminal of the LED driver.



Step 9:
Connect the Connection Wire to the LED Tubes through 2P socket one by one.



Step 10:
Finish all connection between LED driver and . LED strips.



Step 11:
Install the top cover of the wiring box to cover the LED driver.



Step 12:
Pull the movable bolt at the edge of the troffer retrofit kit and close the cover slightly.



Step 13:
Recover the power supply and have a test. Replacement of LED Magnet Tubes is completed.



- Warning**
1. Please cut off the power before any installation or maintenance work.
 2. Please strictly follow the operation rules and use right tools in the installation.
 3. The light fixtures shall be installed, connected and tested by licensed electricians only.