

## PRODUCT DESCRIPTION:

T8 linear tube retrofits provide exceptional lighting for areas such as, commercial buildings, hotels, conference rooms, schools and office buildings.

## FEATURES:

- Single ended Type C
- Input voltage is AC120V-277V
- Low thermal decay
- Wide beam full directional lighting
- No mercury
- Recyclable

## External Tube 10W Spec

LOD-EXT82FD-10W40KF-1

LOD-EXT82FD-10W50KF-1



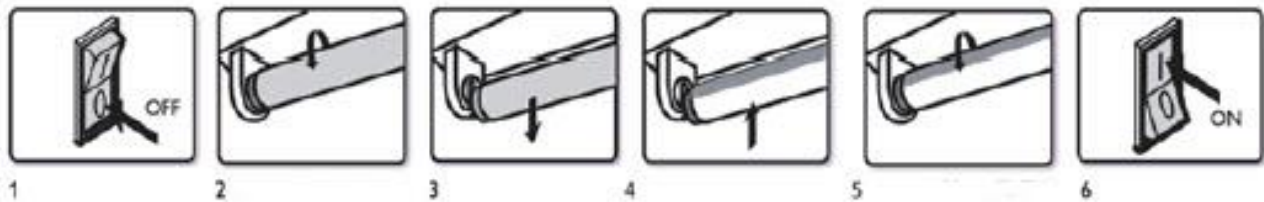
**SPECIFICATIONS:**

SPECIFICATION	Details	
Model	LOD-EXT82FD-10W40KF-1	LOD-EXT82FD-10W50KF-1
Input Wattage (W)	10W	
Lumens Delivered (LM)	1,258.3LM	1,311.1LM
Efficacy (LM/W)	123.3LM/W	129.8LM/W
CRI	82.5	82.7
Lifespan	50,000 hours	
Color Temperature	4,000K	5,000K
Wattage Equivalent	25W	
Dimmable	No	
IP Rating	IP40	
Beam Angle	120	
Input Voltage	AC110-277V	
Power Factor	0.91	0.92
Housing	Aluminum	
Lens	Frosted	
Mounting	G13	
Size		
THD	12.6%	13.2%
Certification	DLC, UL, FCC, CE RoHS, TUV, ISO9001	
Operating Temperature	-20°C to 50°C (-4°F to 122°F)	
Environment	Indoor	
Warranty	5 years limited	



**INSTALLATION GUIDE:**

1. Make sure to turn off power source.
2. Remove diffuser (if provided).
3. Remove the conventional fluorescent lamp and ballast, install LED driver according to wiring diagram.
4. Plug T8 LED tube into lamp holders.
5. Replace diffuser (if removed in step 2).
6. Turn power on and check the light distribution angle.



**WIRING DIAGRAM:**

