

LED LOC-SPAL Area Light Family Series

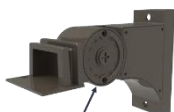


50W / 80W / 100W / 150W



180W / 200W / 240W / 320W

MOUNTING OPTIONS:



Adjustable Arm

Adjustable Arm



Trunnion



Adjustable Slip Fitter

Adjustable Slip Fitter

WATTAGE	BUG RATING
50/80/100/150	B3-U0-G3
180/200/240/320	B5-U0-G4

CONSTRUCTION:

Bronze die-cast aluminum housing treated by anodic oxidation.

OPTICAL SYSTEM:

Samsung 2835 LED chips. 120° beam angle. Type 3 lens standard.

WARRANTY:

5-year limited warranty. Actual performance may differ as a result of end-user environment and application.

ELECTRICAL:

Available as 120-277V input. 10KV surge protection. -40°C to 50°C, -40°F to 122°F

INSTALLATION & MOUNTING:

Pole Mounting - Extruded Arm, Slip Fitter or Trunnion.

CONTROLS & DIMMING:

0-10V dimming comes standard. Motion sensor, photocell and remote-control options available.

FEATURES

- Default Wattage:
 - 150W
 - 320W
- IP65 rated
- Full cut off
- Easy installation and maintenance
- Corrosion and rust proof
- 50,000 hours lifetime

SUITABLE APPLICATIONS

- Warehouses
- Stadiums
- Factories
- Parking Lots
- Supermarkets
- Logistic Centers
- Exhibition Halls

DLC Product ID:

- LOC-SPAL-MW(50/80/100/150)50KD-T3LV – S-VUAE6C
- LOC-SPAL-MW(180/200/240/320)50KD-T3LV – S-9O8EC6



OPTIONAL ACCESSORIES:



Motion Sensor
LOC-ANT-5-4T

(Compatible with remote control)



Remote Control
LOD-RC-100



Photocell (Daylight Sensor)
LOC-SK-101-4T

(Not compatible with remote control)

LOC-SPAL-MW(50/80/100/150)50KD-T3LV

WATTAGE SELECTABLE	CCT	LUMENS	EFFICACY	VOLTAGE	CRI	POWER FACTOR	THD	REPLACES
50W	5000K	7,500LM	150lm/W	120-277V	70	0.9	20%	175W HID
80W	5000K	12,000LM	150lm/W	120-277V	70	0.9	20%	175W HID
100W	5000K	15,000LM	150lm/W	120-277V	70	0.9	20%	600W HID
150W	5000K	22,500LM	150lm/W	120-277V	70	0.9	20%	600W HID

LOC-SPAL-MW(180/200/240/320)50KD-T3LV

WATTAGE SELECTABLE	CCT	LUMENS	EFFICACY	VOLTAGE	CRI	POWER FACTOR	THD	REPLACES
180W	5000K	26,100LM	145lm/W	120-277V	70	0.9	20%	600W HID
200W	5000K	29,000LM	145lm/W	120-277V	70	0.9	20%	600W HID
240W	5000K	34,800LM	145lm/W	120-277V	70	0.9	20%	1,000W HID
320W	5000K	46,400LM	145lm/W	120-277V	70	0.9	20%	1,000W HID

ADJUSTABLE



Model: LOC-SPAL-MW(50/80/100/150)50KD-T3LV

I = 150W II = 100W III = 80W IV = 50W

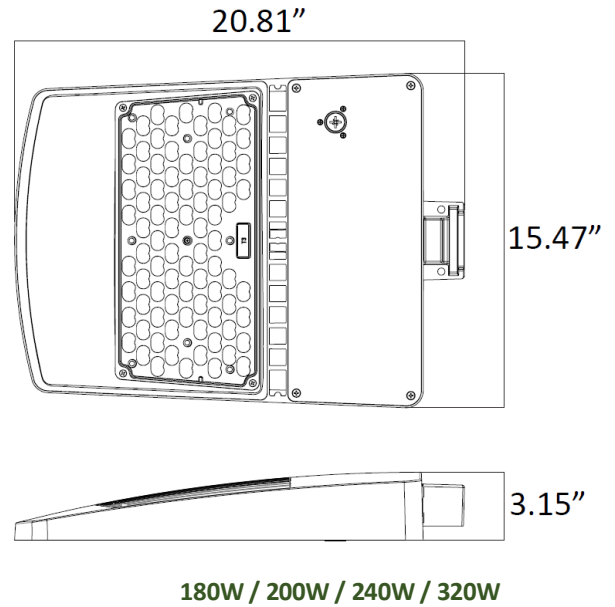
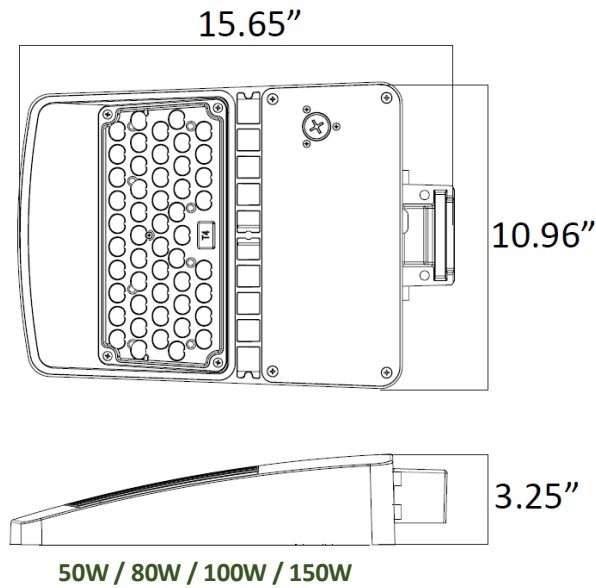
Default Wattage: 150W

Model: LOC-SPAL-MW(180/200/240/320)50KD-T3LV

I = 320W II = 240W III = 200W IV = 180W

Default Wattage 320W

MEASUREMENTS



MODEL	QUANTITY	WEIGHT	UPC CODE
LOC-SPAL-MW(50/80/100/150)50KD-T3LV	1	11.8lbs	00815586024605
LOC-SPAL-MW(180/200/240/320)50KD-T3LV	1	18.74lbs	00815586024629

EPA RATINGS

LOC-SPAL-MW(50/80/100/150)50KD-T3LV EPA Calcs (1.2FT ^2) View		Single Fixture	2 Fixtures at 90°	2 Fixtures at 180°	3 Fixtures at 90°	3 Fixtures at 120°	4 Fixtures at 90°
Mounting Application	Fixture Position						
	Horizontal	0.504 sq ft	0.696 sq ft	1.008 sq ft	1.128 sq ft	1.56 sq ft	1.116 sq ft
	45°	0.9924 sq ft	1.4964 sq ft	0.9924 sq ft	2.004 sq ft	2.568 sq ft	2.004 sq ft
	Vertical	1.338 sq ft	1.842 sq ft	1.38 sq ft	2.34 sq ft	3.18 sq ft	23.4 sq ft

LOC-SPAL-MW(180/200/240/320)50KD-T3LV EPA Calcs (1.2FT ^2) View		Single Fixture	2 Fixtures at 90°	2 Fixtures at 180°	3 Fixtures at 90°	3 Fixtures at 120°	4 Fixtures at 90°
Mounting Application	Fixture Position						
	Horizontal	0.612 sq ft	0.9156 sq ft	1.224 sq ft	1.392 sq ft	1.3608 sq ft	1.392 sq ft
	45°	1.788 sq ft	2.38 sq ft	1.788 sq ft	2.88 sq ft	4.056 sq ft	2.88 sq ft
	Vertical	2.472 sq ft	3.084 sq ft	2.472 sq ft	3.696 sq ft	4.44 sq ft	3.696 sq ft