



# KT-LED45PSHID-E26-8CSB-D

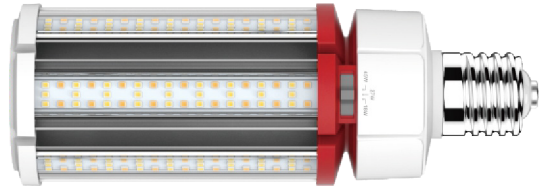
## HID REPLACEMENT LED LAMP

### DESCRIPTION

Power Selectable + Color Selectable 45W HID Replacement LED Lamp | 80 CRI | IP64



<b>LAMP TYPE:</b> HID Replacement LED
<b>BASE TYPE:</b> E26 (Medium)
<b>SELECTABLE WATTAGE:</b> 45W, 36W, 27W
<b>SELECTABLE COLOR TEMPERATURE:</b> 5000K, 4000K, 3000K
<b>METAL HALIDE EQUIVALENT:</b> 175W
<b>COLOR RENDERING INDEX (CRI):</b> >80
<b>WARRANTY:</b> 5 Years



### PRODUCT FEATURES

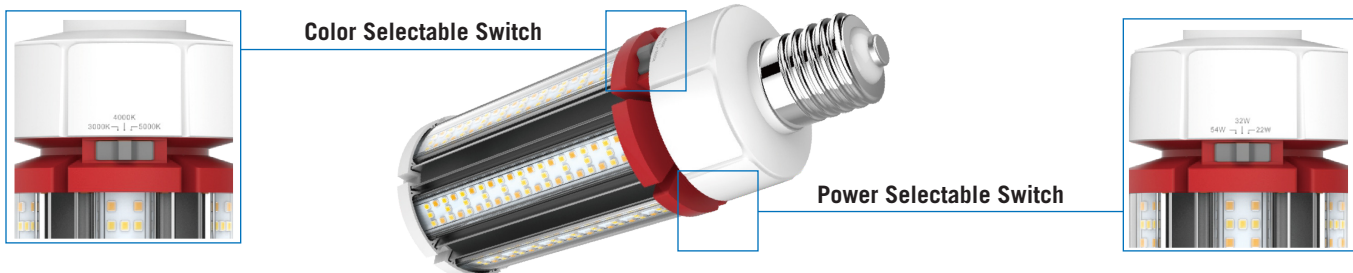
- Replacement for conventional metal halide lamp
- Selectable wattage: 45W, 36W, 27W
- Selectable CCT: 5000K, 4000K, 3000K
- 50,000+ hour lifetime
- Environmentally friendly: No mercury used
- Instant startup
- UL listed
- Operating temperature: -40°C/-40°F to 60°C/140°F
- Integral driver, eliminates the need for external driver or ballast; includes 4kV surge protection
- IP64 rated; integrated heat sink quickly dissipates heat and guides water intrusion out of the lamp
- Suitable for use in fully enclosed fixture
- Do not use with standard dimmers. Not compatible with phase dimmers. Dimming functions with sensors only

### ELECTRICAL AND PERFORMANCE SPECIFICATIONS

Keystone Catalog Number	Input Voltage	Selectable Power	Selectable CCT	Base Type	CRI	Lumens	Efficacy
KT-LED45PSHID-E26-8CSB-D	120-277V	45W	3000K	E26	>80	6075 lm	135 lm/W
			4000K			6525 lm	145 lm/W
			5000K			6300 lm	140 lm/W
	120-277V	36W	3000K	E26	>80	4860 lm	135 lm/W
			4000K			5220 lm	145 lm/W
			5000K			5040 lm	140 lm/W
	120-277V	27W	3000K	E26	>80	3645 lm	135 lm/W
			4000K			3915 lm	145 lm/W
			5000K			3780 lm	140 lm/W

\* Color Uniformity: CCT (Correlated Color Temperature) range as per guidelines outlined in ANSI C78.377-2017

### SELECTABILITY

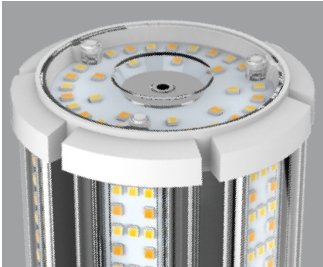




# KT-LED45PSHID-E26-8CSB-D

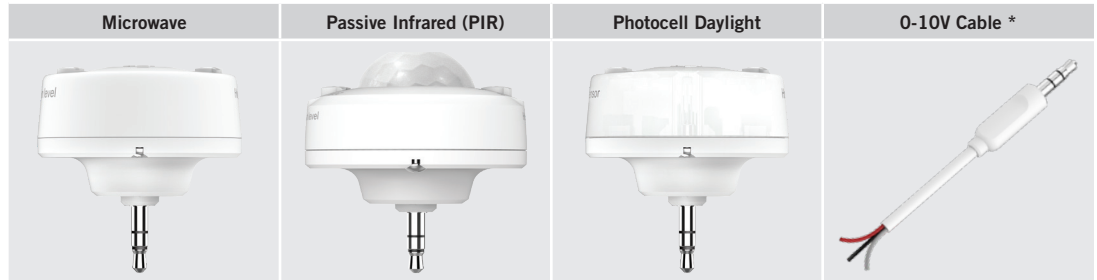
## HID REPLACEMENT LED LAMP

### SMART PORT LED



On the top of the lamp is a low-voltage AUX port for lamp level sensor controls.

### SMART PORT LED AUX SENSORS

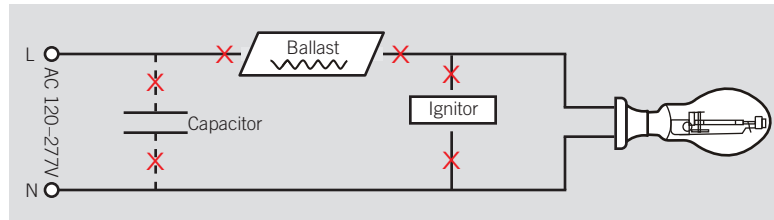


\* For use with continuous dimming applications.

### WIRING INSTRUCTIONS

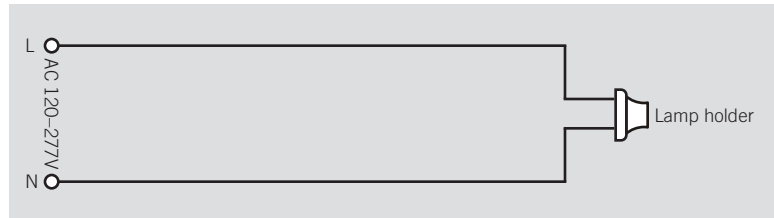
#### STEP 1

**Disconnect power.** Disconnect and remove existing ballast, capacitor, and/or ignitor (where applicable) from fixture.



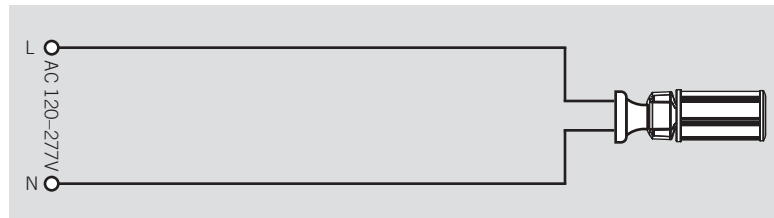
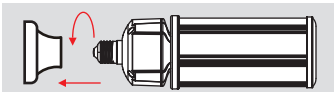
#### STEP 2

Rewire for line voltage to the lamp socket.



#### STEP 3

Install new LED replacement lamp. Ensure lamp is operating properly when power is turned on.

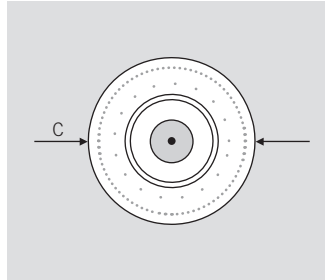
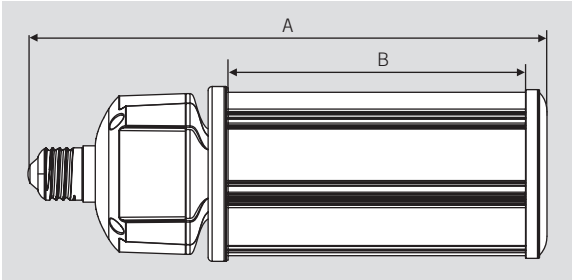




# KT-LED45PSHID-E26-8CSB-D

## HID REPLACEMENT LED LAMP

### PHYSICAL CHARACTERISTICS



### LAMP DIMENSIONS

A (Body Length)	9.10"
B (Illuminated Length)	5.07"
C (Diameter)	3.30"

BASE TYPE: E26 (Medium)

### ORDERING INFORMATION

ORDER CODE	PACK QTY.	EASY CODE	UPC
KT-LED45PSHID-E26-8CSB-D	16	DWL-09	843654128603

### CATALOG NUMBER BREAKDOWN

# KT-LED45PSHID-E26-8CSB-D

1 2 3 4 5 6 7 8 9 10

- 1 Keystone Technologies
- 2 LED Lamp
- 3 Wattage
- 4 Power Selectable
- 5 Lamp Type
- 6 Base Type
- 7 800 Series
- 8 Color Selectable
- 9 Color Select Designation
- 10 Direct Drive

### 9 Color Select Designation

A	3000K, 4000K, 5000K
B	3000K, 4000K, 5000K
C	3000K, 3500K, 4000K, 5000K
D	TBD