



KT-LED40T8HO-96G-865-D2

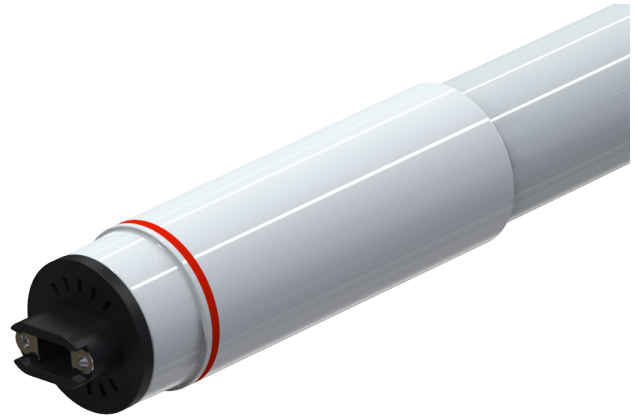
T8 LED LAMP

DESCRIPTION

40W T8HO/T12HO LED | 6500K | >80 CRI | High Efficiency | 8 Foot



LAMP TYPE: Linear
BULB TYPE: T8HO/T12HO LED
BASE TYPE: R17d (Recessed Double Contact)
WATTAGE: 40W
COLOR TEMPERATURE: 6500K
COLOR RENDERING INDEX (CRI): >80
WARRANTY: 5 Years



PRODUCT FEATURES

- Replacement for conventional T8/T12 8-foot, single-pin fluorescent lamp
- Double-ended line voltage wiring: Connect power to each end for simplified installation
- 50,000+ hour lifetime
- Approximately 50% more energy efficient than standard F96T12 lamps
- Environmentally friendly: No mercury used
- NSF listed: NSF/ANSI Standard 2: Food equipment, splash zone (component level—not for direct food zone without additional fixture considerations)
- Compatible with KT-EMRG-LED-12-1200-AC and KT-EMRG-LED-12-1200-AC /DF LED emergency back ups
- Includes 1 C-clips to be installed with the lamps into the fixture ballast cover to prevent any potential undesired lamp twisting or sagging
- Frosted lens eliminates pixelation
- UL classified
- Operating Temperature: (-20°C/-4°F) (45°C/113°F)
- Working Humidity: 30%-85%
- Integral driver (isolated): Eliminates the need for external driver or ballast
- 130+ lumens per Watt
- Instant startup
- Not rated for use in Vapor Tight style fixtures

OPERATING SPECIFICATIONS

ELECTRICAL CHARACTERISTICS

Input Voltage	Power Consumption	Power Factor	Input Current
120-277Vac	40W	>0.9	0.33 @ 120V 0.14 @ 277V

PHOTOMETRIC CHARACTERISTICS

Color Temperature	6500K
Luminous Flux	5500 lm
Color Rendering Index (CRI)	>80
Efficacy	136 lm/W
Beam Angle	325°

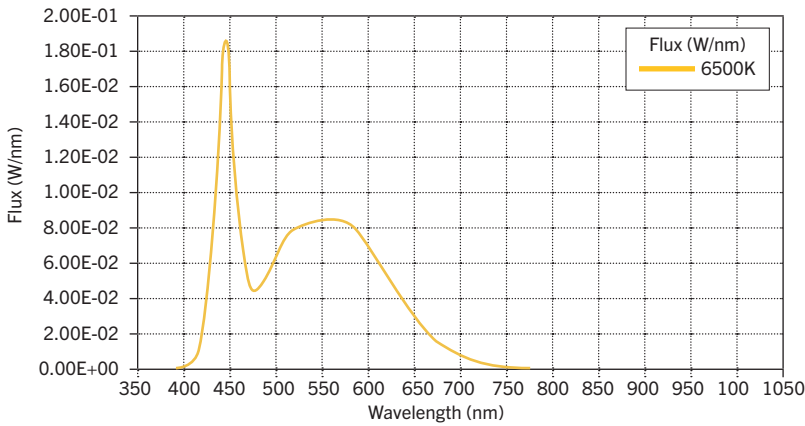
RATED LIFE

L70 (Hours)	50,000
-------------	--------

KT-LED40T8H0-96G-865-D2

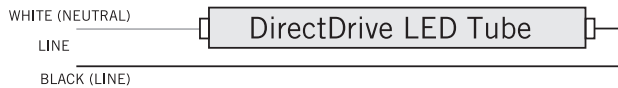
T8 LED LAMP

SPECTRAL DISTRIBUTION



WIRING DIAGRAMS

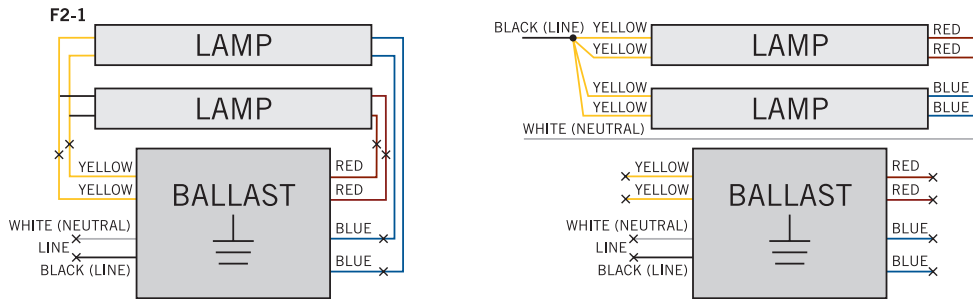
Double Ended Line Voltage Wiring



For Retrofit Applications (see below notes)

1. Identify ballast configuration as shown below and cut all wires connected to the ballast accordingly.

Typical Ballast Configurations:



2. Confirm that the lampholders in the fixture are R17d Double Recessed Contact lampholders. These DirectDrive LED tubes require R17d Double Recessed Contact lampholders.

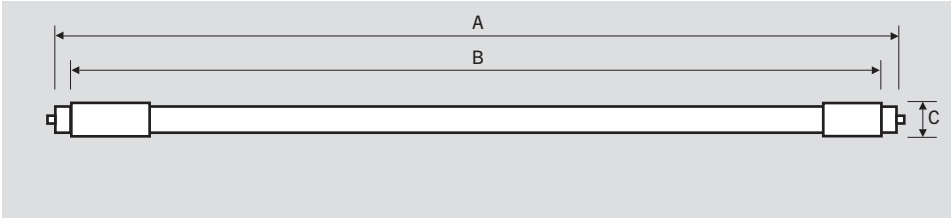
3. Rewire the fixture using existing lampholders as shown above according to the original ballast wiring configuration.



KT-LED40T8HO-96G-865-D2

T8 LED LAMP

PHYSICAL CHARACTERISTICS



LAMP DIMENSIONS

A (Body Length)	93.31"
B (Illuminated Length)	87.41"
C End Cap Diameter	1.31" x 1.31"
D Dimension	1.08"

NOMINAL LENGTH: 96"

BASE TYPE: R17d (Recessed Double Contract)

ORDERING INFORMATION

ORDER CODE	PACK QTY.	UPC	EASY CODE
KT-LED40T8HO-96G-865-D2	10	843654140087	ZCZ-72

CATALOG NUMBER BREAKDOWN

KT-LED40T8HO-96G-865-D2

- 1
- 2
- 3
- 4
- 5
- 6
- 7
- 8
- 9
- 10

- 1** Keystone Technologies
- 2** LED Lamp
- 3** Wattage
- 4** Lamp Type
- 5** High Output
- 6** Nominal Length (Inches)
- 7** Glass
- 8** 80 CRI
- 9** Color Temperature
- 10** Double Drive Series