



KT-LED40T8-96G-850-D2

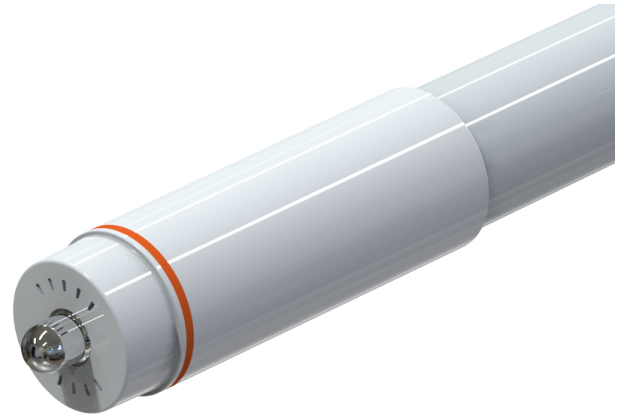
T8 LED LAMP

DESCRIPTION

40W T8 LED | 5000K | >80 CRI | High Efficiency | 8 Foot



| |
|---|
| LAMP TYPE: Linear |
| BULB TYPE: T8 |
| BASE TYPE: Fa8 (Single-Pin) |
| WATTAGE: 40W |
| COLOR TEMPERATURE: 5000K |
| COLOR RENDERING INDEX (CRI): >80 |
| WARRANTY: 5 Years |



PRODUCT FEATURES

- Replacement for conventional T8/T12 8-foot, single-pin fluorescent lamp
- Double-ended line voltage wiring: Connect power to each end for simplified installation
- 50,000+ hour lifetime
- Approximately 50% more energy efficient than standard F96T12 lamps
- Environmentally friendly: No mercury used
- NSF listed: NSF/ANSI Standard 2: Food equipment, splash zone (component level—not for direct food zone without additional fixture considerations)
- Compatible with KT-EMRG-LED-12-1200-AC and KT-EMRG-LED-12-1200-AC /DF LED emergency back ups
- Includes 1 C-clips to be installed with the lamps into the fixture ballast cover to prevent any potential undesired lamp twisting or sagging
- Frosted lens eliminates pixelation
- UL classified
- Operating Temperature: (-20°C/-4°F) (45°C/113°F)
- Working Humidity: 30%-85%
- Integral driver (isolated): Eliminates the need for external driver or ballast
- 130+ lumens per Watt
- Instant startup
- DLC Listed
- Not rated for use in Vapor Tight style fixtures

OPERATING SPECIFICATIONS

ELECTRICAL CHARACTERISTICS

| Input Voltage | Power Consumption | Power Factor | Input Current |
|---------------|-------------------|--------------|----------------------------|
| 120-277Vac | 40W | >0.9 | 0.33 @ 120V 0.14 @ 277V |

PHOTOMETRIC CHARACTERISTICS

| | |
|-----------------------------|----------|
| Color Temperature | 5000K |
| Luminous Flux | 5500 lm |
| Color Rendering Index (CRI) | >80 |
| Efficacy | 136 lm/W |
| Beam Angle | 325° |

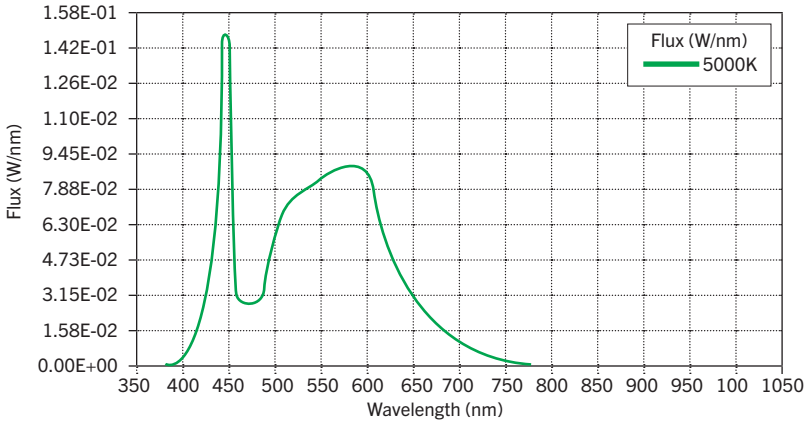
RATED LIFE

| | |
|-------------|--------|
| L70 (Hours) | 50,000 |
|-------------|--------|

KT-LED40T8-96G-850-D2

T8 LED LAMP

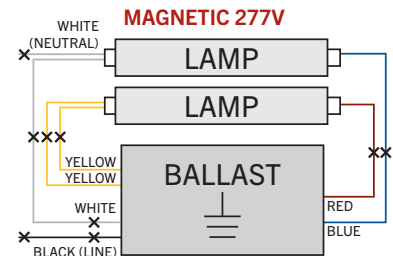
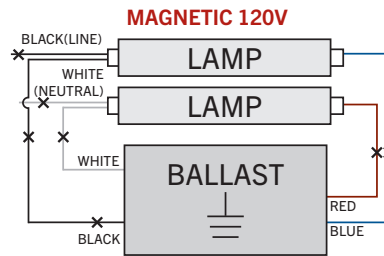
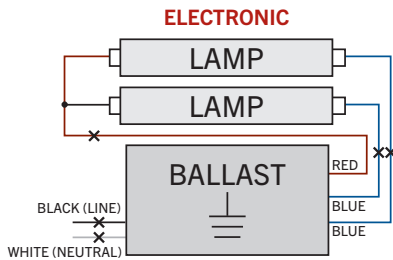
SPECTRAL DISTRIBUTION



WIRING DIAGRAMS

1. Identify ballast configuration as shown below and cut all wires connected to the ballast accordingly.

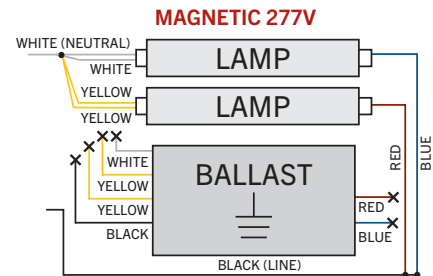
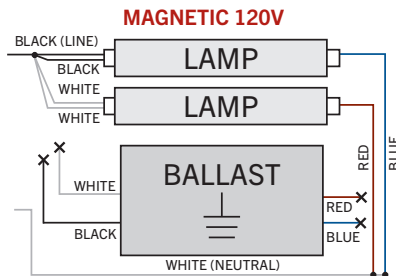
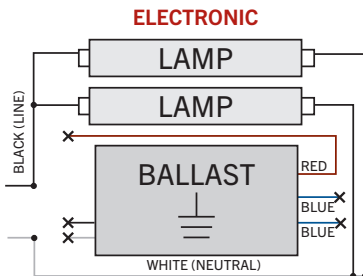
Typical Ballast Configurations:



2. Confirm that the lampholders in the fixture are single-pin Fa8 lampholders. These DirectDrive LED tubes require single-pin Fa8 lampholders.

3. Rewire the fixture using existing lampholders as shown below according to the original ballast wiring configuration.

Typical Ballast Configurations:

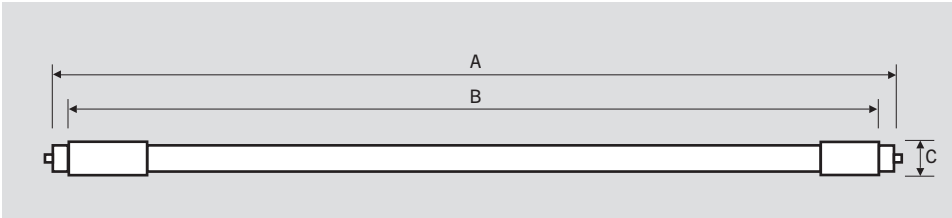




KT-LED40T8-96G-850-D2

T8 LED LAMP

PHYSICAL CHARACTERISTICS



LAMP DIMENSIONS

| | |
|------------------------|--------|
| A (Body Length) | 93.31" |
| B (Illuminated Length) | 87.41" |
| C End Cap Diameter | 1.31" |
| D Dimension | 1.08" |

NOMINAL LENGTH: 96"
BASE TYPE: Fa8 (Single-Pin)

ORDERING INFORMATION

| ORDER CODE | PACK QTY. | UPC | EASY CODE |
|-----------------------|-----------|--------------|-----------|
| KT-LED40T8-96G-850-D2 | 10 | 843654140032 | RLU-31 |

CATALOG NUMBER BREAKDOWN

KT-LED40T8-96G-850-D2

- | | |
|----------------------------------|------------------------------|
| 1 Keystone Technologies | 6 Glass |
| 2 LED Lamp | 7 80 CRI |
| 3 Wattage | 8 Color Temperature |
| 4 Lamp Type | 9 Double Drive Series |
| 5 Nominal Length (Inches) | |