



# KT-LED40T8-96G-840-D2

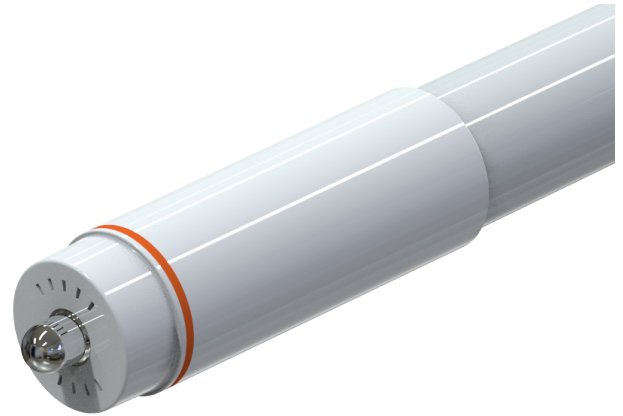
## T8 LED LAMP

### DESCRIPTION

40W T8 LED | 4000K | >80 CRI | High Efficiency | 8 Foot



<b>LAMP TYPE:</b> Linear
<b>BULB TYPE:</b> T8
<b>BASE TYPE:</b> Fa8 (Single-Pin)
<b>WATTAGE:</b> 40W
<b>COLOR TEMPERATURE:</b> 4000K
<b>COLOR RENDERING INDEX (CRI):</b> >80
<b>WARRANTY:</b> 5 Years



### PRODUCT FEATURES

- Replacement for conventional T8/T12 8-foot, single-pin fluorescent lamp
- Double-ended line voltage wiring: Connect power to each end for simplified installation
- 50,000+ hour lifetime
- Approximately 50% more energy efficient than standard F96T12 lamps
- Environmentally friendly: No mercury used
- NSF listed: NSF/ANSI Standard 2: Food equipment, splash zone (component level—not for direct food zone without additional fixture considerations)
- Compatible with KT-EMRG-LED-12-1200-AC and KT-EMRG-LED-12-1200-AC /DF LED emergency back ups
- Includes 1 C-clips to be installed with the lamps into the fixture ballast cover to prevent any potential undesired lamp twisting or sagging
- Frosted lens eliminates pixelation
- UL classified
- Operating Temperature: (-20°C/-4°F) (45°C/113°F)
- Working Humidity: 30%-85%
- Integral driver (isolated): Eliminates the need for external driver or ballast
- 130+ lumens per Watt
- Instant startup
- DLC Listed
- Not rated for use in Vapor Tight style fixtures

### OPERATING SPECIFICATIONS

#### ELECTRICAL CHARACTERISTICS

Input Voltage	Power Consumption	Power Factor	Input Current
120-277Vac	40W	>0.9	0.33 @ 120V 0.14 @ 277V

#### PHOTOMETRIC CHARACTERISTICS

Color Temperature	4000K
Luminous Flux	5500 lm
Color Rendering Index (CRI)	>80
Efficacy	136 lm/W
Beam Angle	325°

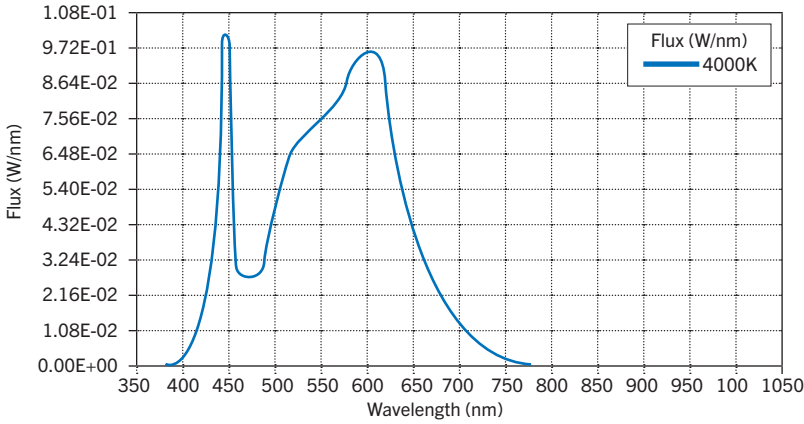
#### RATED LIFE

L70 (Hours)	50,000
-------------	--------

# KT-LED40T8-96G-840-D2

## T8 LED LAMP

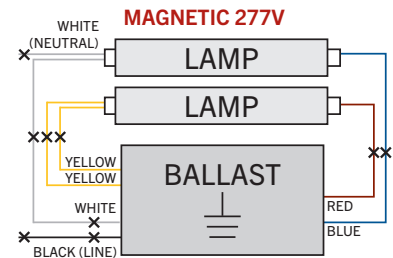
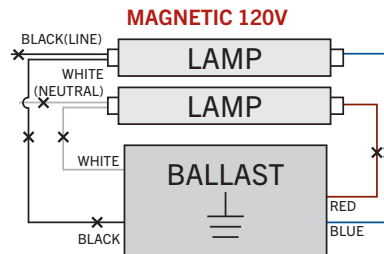
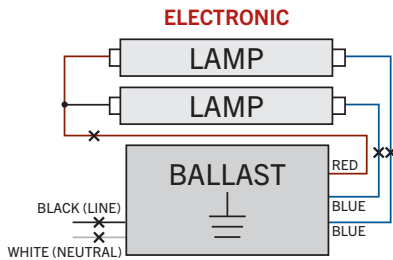
### SPECTRAL DISTRIBUTION



### WIRING DIAGRAMS

1. Identify ballast configuration as shown below and cut all wires connected to the ballast accordingly.

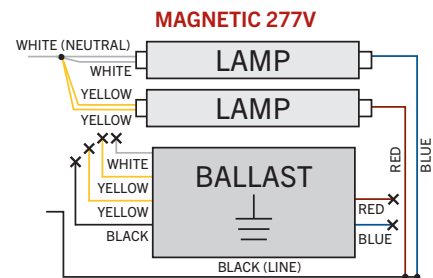
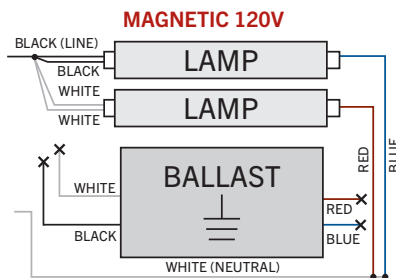
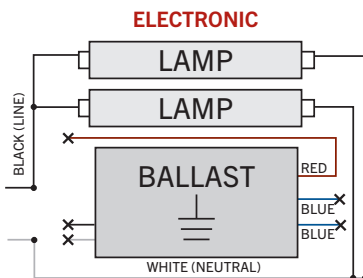
#### Typical Ballast Configurations:



2. Confirm that the lampholders in the fixture are single-pin Fa8 lampholders. These DirectDrive LED tubes require single-pin Fa8 lampholders.

3. Rewire the fixture using existing lampholders as shown below according to the original ballast wiring configuration.

#### Typical Ballast Configurations:

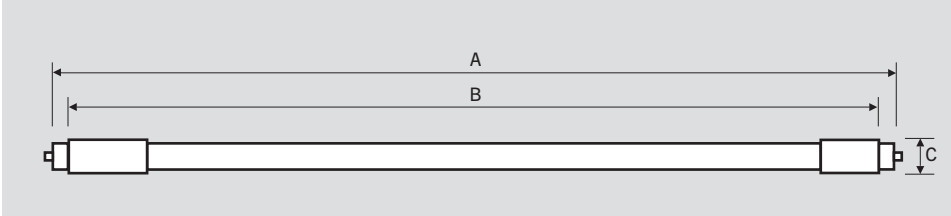




# KT-LED40T8-96G-840-D2

## T8 LED LAMP

### PHYSICAL CHARACTERISTICS



#### LAMP DIMENSIONS

A (Body Length)	93.31"
B (Illuminated Length)	87.41"
C End Cap Diameter	1.31"
D Dimension	1.08"

**NOMINAL LENGTH:** 96"  
**BASE TYPE:** Fa8 (Single-Pin)

### ORDERING INFORMATION

ORDER CODE	PACK QTY.	UPC	EASY CODE
KT-LED40T8-96G-840-D2	10	843654140025	LQA-37

### CATALOG NUMBER BREAKDOWN

# KT-LED40T8-96G-840-D2

- |                         |            |           |             |                           |          |          |                     |                       |
|-------------------------|------------|-----------|-------------|---------------------------|----------|----------|---------------------|-----------------------|
| <b>1</b>                | <b>2</b>   | <b>3</b>  | <b>4</b>    | <b>5</b>                  | <b>6</b> | <b>7</b> | <b>8</b>            | <b>9</b>              |
| 1 Keystone Technologies | 2 LED Lamp | 3 Wattage | 4 Lamp Type | 5 Nominal Length (Inches) | 6 Glass  | 7 80 CRI | 8 Color Temperature | 9 Double Drive Series |