



KT-LED40T8-96G-835-D2

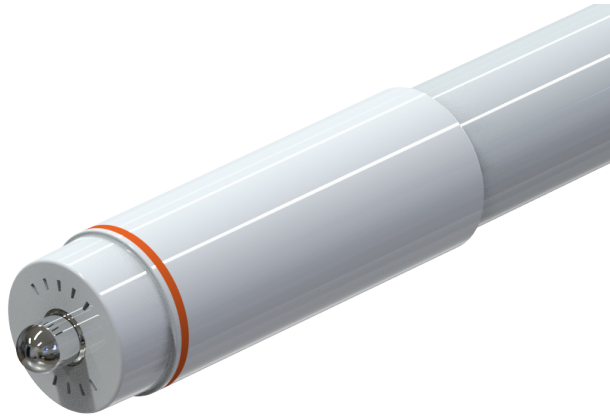
T8 LED LAMP

DESCRIPTION

40W T8 LED | 3500K | >80 CRI | High Efficiency | 8 Foot



LAMP TYPE: Linear
BULB TYPE: T8
BASE TYPE: Fa8 (Single-Pin)
WATTAGE: 40W
COLOR TEMPERATURE: 3500K
COLOR RENDERING INDEX (CRI): >80
WARRANTY: 5 Years



PRODUCT FEATURES

- Replacement for conventional T8/T12 8-foot, single-pin fluorescent lamp
- Double-ended line voltage wiring: Connect power to each end for simplified installation
- 50,000+ hour lifetime
- Approximately 50% more energy efficient than standard F96T12 lamps
- Environmentally friendly: No mercury used
- NSF listed: NSF/ANSI Standard 2: Food equipment, splash zone (component level—not for direct food zone without additional fixture considerations)
- Compatible with KT-EMRG-LED-12-1200-AC and KT-EMRG-LED-12-1200-AC /DF LED emergency back ups
- Includes 1 C-clips to be installed with the lamps into the fixture ballast cover to prevent any potential undesired lamp twisting or sagging
- Frosted lens eliminates pixelation
- UL classified
- Operating Temperature: (-20°C/-4°F) (45°C/113°F)
- Working Humidity: 30%-85%
- Integral driver (isolated): Eliminates the need for external driver or ballast
- 130+ lumens per Watt
- Instant startup
- DLC Listed
- Not rated for use in Vapor Tight style fixtures

OPERATING SPECIFICATIONS

ELECTRICAL CHARACTERISTICS

Input Voltage	Power Consumption	Power Factor	Input Current
120-277Vac	40W	>0.9	0.33 @ 120V 0.14@ 277V

PHOTOMETRIC CHARACTERISTICS

Color Temperature	3500K
Luminous Flux	5500 lm
Color Rendering Index (CRI)	>80
Efficacy	136 lm/W
Beam Angle	325°

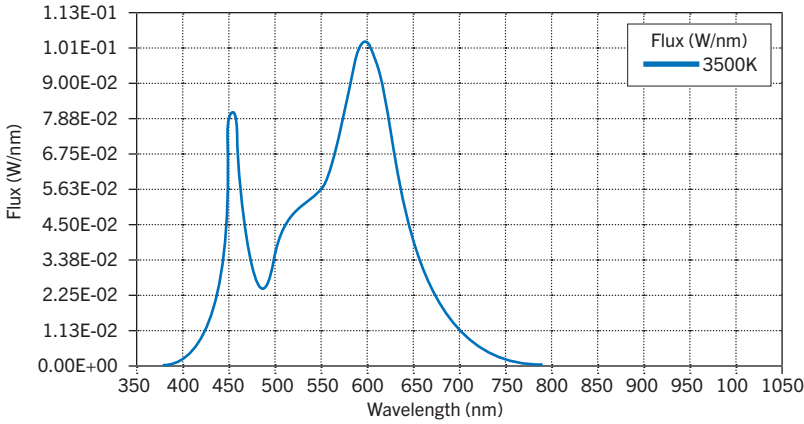
RATED LIFE

L70 (Hours)	50,000
-------------	--------

KT-LED40T8-96G-835-D2

T8 LED LAMP

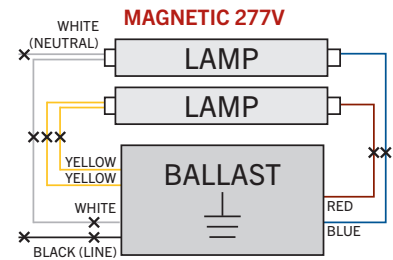
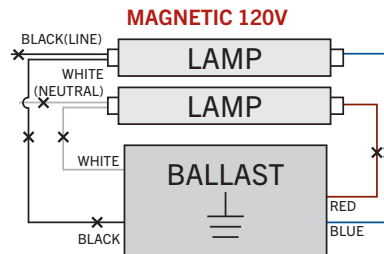
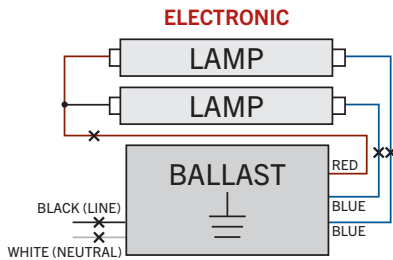
SPECTRAL DISTRIBUTION



WIRING DIAGRAMS

1. Identify ballast configuration as shown below and cut all wires connected to the ballast accordingly.

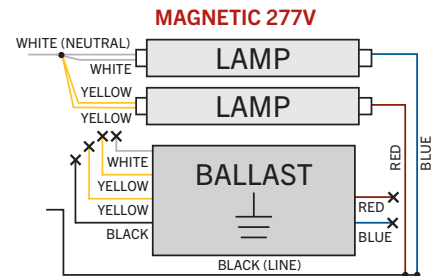
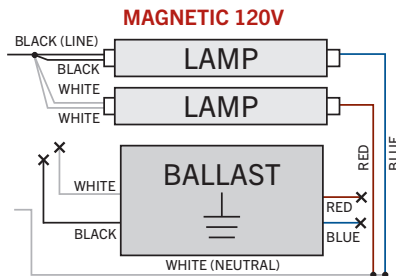
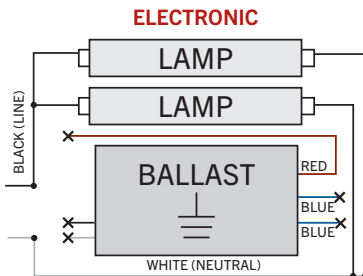
Typical Ballast Configurations:



2. Confirm that the lampholders in the fixture are single-pin Fa8 lampholders. These DirectDrive LED tubes require single-pin Fa8 lampholders.

3. Rewire the fixture using existing lampholders as shown below according to the original ballast wiring configuration.

Typical Ballast Configurations:

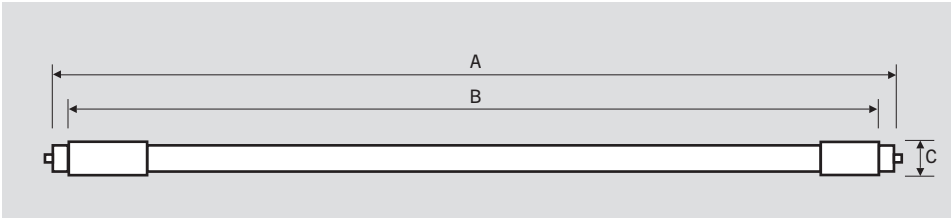




KT-LED40T8-96G-835-D2

T8 LED LAMP

PHYSICAL CHARACTERISTICS



LAMP DIMENSIONS

A (Body Length)	93.31"
B (Illuminated Length)	87.41"
C End Cap Diameter	1.31"
D Dimension	1.08"

NOMINAL LENGTH: 96"
BASE TYPE: Fa8 (Single-Pin)

ORDERING INFORMATION

ORDER CODE	PACK QTY.	UPC	EASY CODE
KT-LED40T8-96G-835-D2	10	843654140018	GAP-29

CATALOG NUMBER BREAKDOWN

KT-LED40T8-96G-835-D2

- 1
- 2
- 3
- 4
- 5
- 6
- 7
- 8
- 9

- 1 Keystone Technologies
- 2 LED Lamp
- 3 Wattage
- 4 Lamp Type
- 5 Nominal Length (Inches)
- 6 Glass
- 7 80 CRI
- 8 Color Temperature
- 9 Double Drive Series