

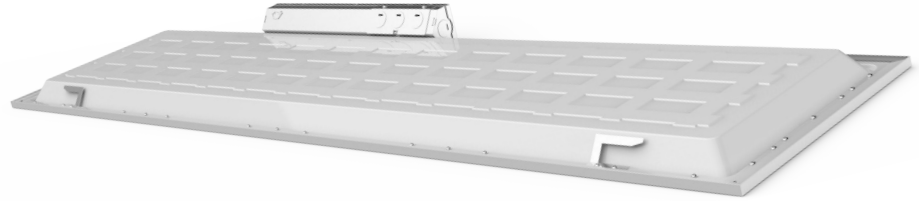


KT-BPLED30-14-8XX-VDIM-P

BACKLIT LED PANEL LIGHT

DESCRIPTION

1'x4' LED panel light, 30W, 120-277V input, 0-10V dimming



PRODUCT FEATURES

- Aluminum frame featuring stepped edge design detail and gloss white paint for improved aesthetics
- New backlit style design; fits standard T-grid ceilings
- Suitable for recessed or surface mount (with optional accessories)*
- Construction features precise optical lenses over each individual LED, offering optimal light diffusion and consistent surface illumination, with no risk of yellowing over product lifetime
- Suitable for damp locations
- Powered by Keystone 0-10V dimmable LED driver with built-in junction box
- Compatible with Keystone SmartSafe LED emergency backup
- Over 50% energy savings compared to traditional fluorescent troffers
- Operating temp range -20°C/-4°F to 40°C/104°F

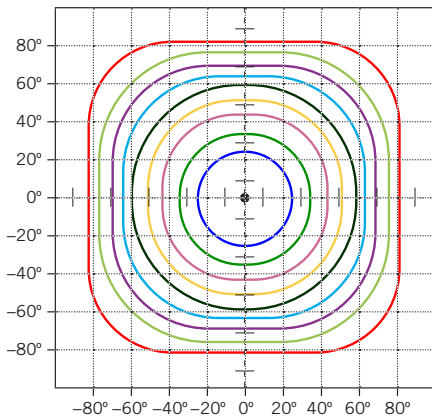
* For use in non-fire rated installations only

PERFORMANCE SPECIFICATIONS

Catalog Number	Input Voltage	Wattage	Color Temperature	Lumen Output	CRI	Power Factor	Efficacy	Lifetime
KT-BPLED30-14-835-VDIM-P	120-277V	30W	3500K	3,750	>80	>0.9	125 lm/W	50,000 Hours
KT-BPLED30-14-840-VDIM-P	120-277V	30W	4000K	3,750	>80	>0.9	125 lm/W	50,000 Hours
KT-BPLED30-14-850-VDIM-P	120-277V	30W	5000K	3,750	>80	>0.9	125 lm/W	50,000 Hours

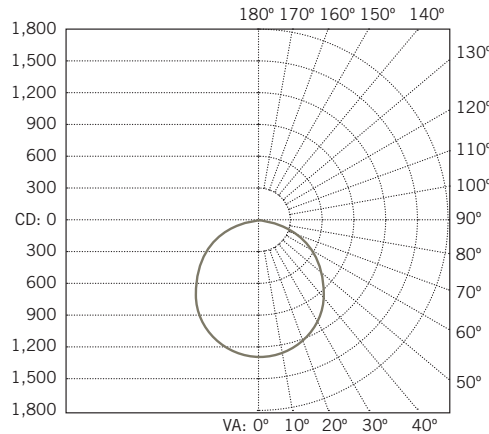
PHOTOMETRIC SPECIFICATIONS

ISOCANDELA PLOT



- Cd: 1116, 90%
- Cd: 992, 80%
- Cd: 868, 70%
- Cd: 744, 60%
- Cd: 620, 50%
- Cd: 496, 40%
- Cd: 372, 30%
- Cd: 248, 20%
- Cd: 122, 10%

POLAR CANDELA DISTRIBUTION



- 120° H
- 119° H
- 116° H
- 114° H

ZONAL LUMEN SUMMARY

Zone	Lumens	% Luminaire
0-60	2,887.7	76.7%
60-90	873.9	23.2%
0-90	3,761.6	99.9%
90-180	3.7	0.1%
0-180	3,765.3	100%

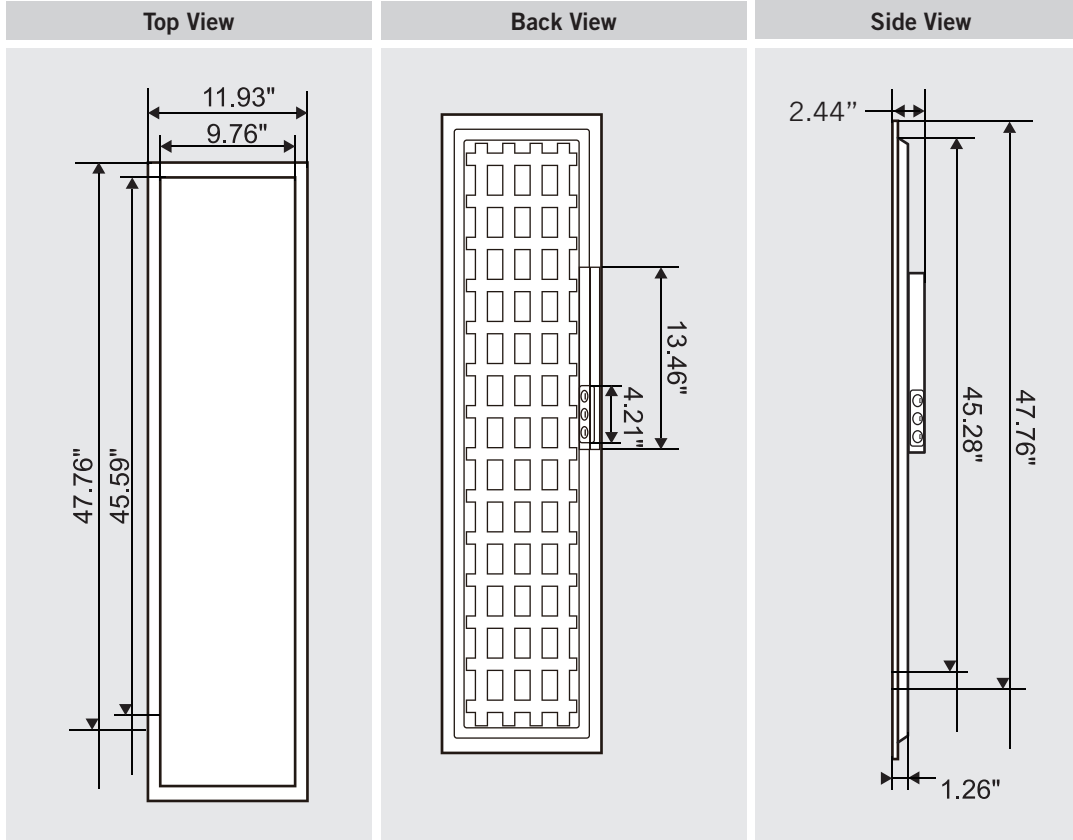


KT-BPLED30-14-8XX-VDIM-P

BACKLIT LED PANEL LIGHT

PHYSICAL SPECIFICATIONS

WEIGHT INFORMATION



1 Piece	1 Carton
6.2 lbs	12.4 lbs

WIRELESS CONTROL OPTIONS

Brand / System	Description	Ordering Number
Lutron Vive	FCJS-010 Wireless 0-10V fixture controller; 1A Max load; factory installed	KT-BPLED30-14-8XX-VDIM-P /FCJS0





KT-BPLED30-14-8XX-VDIM-P

BACKLIT LED PANEL LIGHT

ACCESSORIES (SOLD SEPARATELY)

Accessory	Catalog Number	Description
Emergency Battery Backup Mounting Kit	KT-BPLED-EM-14-KIT	Mounting Bracket for SmartSafe LED emergency backup for 1x4 backlit panels
Surface Mount Kit	KT-BPLED-SM-14-KIT	Surface Mount Kit 1x4 Backlit panels
J-Box	KT-BPLED-JBOX-2	Larger J-Box add-on for LED Backlit Panels, DLC Premium and Power Select Models

ORDERING INFORMATION

CATALOG NUMBER	CARTON QTY.	EASY CODE	UPC
KT-BPLED30-14-835-VDIM-P	2	QXH-69	843654128016
KT-BPLED30-14-840-VDIM-P	2	HVH-89	843654128023
KT-BPLED30-14-850-VDIM-P	2	LCB-72	843654128030

CATALOG NUMBER BREAKDOWN

KT-BPLED30-14-8XX-VDIM-P

1
2
3
4
5
6
7
8

- 1** Keystone Technologies
- 2** Backlit Panel Light LED Fixture
- 3** Wattage
- 4** 1' x 4' Nominal Size
- 5** 800 Series
- 6** Color Temperature
- 7** 0-10V Dimming
- 8** Premium DLC