



PROJECT NAME

CATALOG NO.

TYPE

DATE

NOTE

## SLIM LINEAR LED HIGH BAY

## EHB5.1 Series

High / Low Bays

### DESCRIPTION

The Alphalite EHB Series Slim Linear LED High Bay delivers high lumen output, long life, economic solution, and no restrike time. This energy-efficient LED luminaire offers one-to-one replacement of existing HID or fluorescent high bays. Precision-formed reflectors delivers adequate light in high mounting applications. Modular driver and LED arrays. Economic solution to optimize payback. Capable of being operated with occupancy sensor



### APPLICATION

Various commercial industrial applications with high ceilings: warehouse, manufacturing facilities, retail, gymnasiums, grocery.

### SPECIFICATION FEATURES

#### Construction

Rigid, low-profile steel housing. Precision-engineered and manufactured optics to optimize light delivery to the working plane. Convenient mounting options and sufficient knockouts for controls integration and multiple connection options. Housing features radiator slots for heat dissipation and low temperature LED operation. LED module and driver are replaceable. Housing and optics maintain damp location rating with all internal components.

#### Mounting

Comes standard equipped with V-hooks for mounting. Various mounting options available: surface, suspension, air craft cable, and chain.

#### Finish

Highly reflectivity finish. Baked white paint, applied after fabrication.

#### Electrical

Luminaire utilizes long life, high efficacy LEDs and a highly efficient, reliable LED driver. 120V-277V input voltage for increased versatility. 0-10V continuous dimming comes standard. Ideal when used in conjunction with controls and sensors. Comes equipped with quick disconnect for compliance with US code. 10kA Surge Protection available upon request.

#### Optics

Die formed, 95% reflectivity optical reflectors optimizes performance and light delivery. Comes standard with high transmission frosted lens.

#### Certifications / Regulatory

cULus listed. UL Class 2 Power supply: SCP, OTP, OVP protection, FCC Part 15 Class B, UL8750 Class 2. DLC premium listed.

#### Warranty

7-year limited warranty. See complete warranty terms for details.

### Quick Ship Product

- EHB2-105/840
- EHB2-105/850
- EHB2-155/840
- EHB2-155/850
- EHB4-210/840
- EHB4-210/850
- EHB4-300/850
- EHB4-300/840
- EHB4-400/850

## ORDERING INFORMATION

Sample Number: EHB2-155/840

EHB	2	155	8	40	(Blank)	(Blank)
<b>Series</b>	<b>Form Factor</b>	<b>Lumen Package</b>	<b>CRI</b>	<b>CCT</b>	<b>Input Voltage</b>	<b>AUX power</b>
EHB - Slim Linear LED High Bay	2 - 2' 4 - 4'	105 - 105W 155 - 155W 210 - 210W 300 - 300W 400 - 400W 210/170/155 - 210/170/155W Adjustable	8 - 80+ CRI	40 - 4000K 50 - 5000K	(Blank) - 120-277V C - 120-347V 480 - 480V	(Blank) - Without AUX Power 12V - With DC12V

### Options

#### Accessories

- WG - Wire guard (see pg. 2 for details)
- PMK - Single-point pendant mount kit
- SMK - Surface mount kit
- ACC - Aircraft cable suspension kit
- CHS - S-chain set (4 1/4")
- CRD-x - SJTOW black cord, 18/3, x=length
- TLP - Nema locking plug

#### Driver Options

- CT - Cold temperature driver, -40°F-131°F(-40°C-55°C)

#### Controls

- PIR - On/off PIR High Bay motion sensor
- PIRD - On/off PIR High Bay motion and daylight sensor
- DL - Integrated daylight harvesting
- SMC - Smart Control System
- OS - Step dimming PIR motion sensor and daylight sensor.
- SPD - 10KV Surge Protection Device

Remarks: Sensor configuration tool remote control required, not included

#### Emergency Backup

- (Lumen will maintain over the 90-minute duration)
- EM700 - 700lm
- EM1400 - 1400lm
- EM2000 - 2000lm

#### Assembly in USA

BAA - Assembly in USA



10715 Springdale Ave, Suite 4, Santa Fe Springs, CA 90670  
Tel: 888.287.9228 | Fax: 888.258.9183 | support@alphalite.com | alphalite.com

SUMMARY

Input Voltage	120-277V
Input Frequency	50/60 Hz
Power Factor	>0.95
THD (Max.)	20%
Efficacy	135 LPW
Controls/ Dimming	Full Range 0-10V dimming standard
Dimming Range	10-100%
CRI	>80
CCT	4000K and 5000K
Operating Temp.	-4°F ~ 131°F (-20°C ~ +55°C)
Rated Life	70,000 hours

ENERGY PERFORMANCE DATA

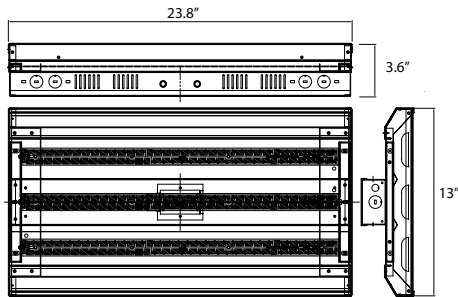
Form Factor	Part No.	Rated Wattage (W)	Delivered Lumens (lm)	Efficacy (lm/W)
2' Frostd Lens	EHB2-105/840*	105	14175	135
	EHB2-105/850*			
	EHB2-155/840	155	20925	135
	EHB2-155/850			
4' Frosted Lens	EHB4-210/840	210	28350	135
	EHB4-210/850			
	EHB4-300/840	300	40500	135
	EHB4-300/850			
	EHB4-400/840*	400	54000	135
	EHB4-400/850*			
	EHB4-(210/170/155)/840*	210/170/155	28350/22950/20925	135
EHB4-(210/170/155)/850*				

\* DLC Premium

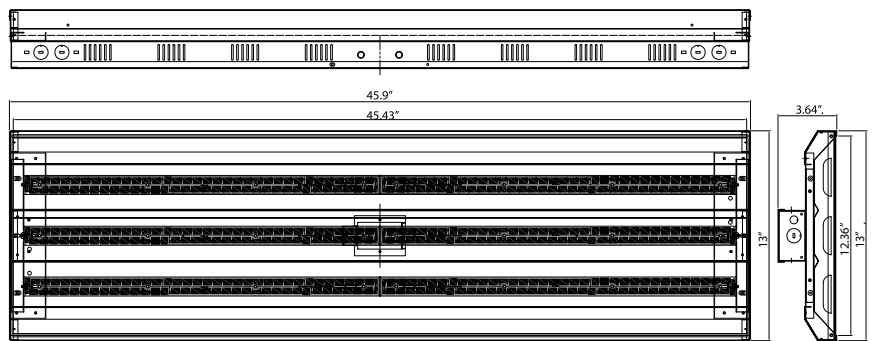
PHYSICAL PARAMETERS

DIMENSION

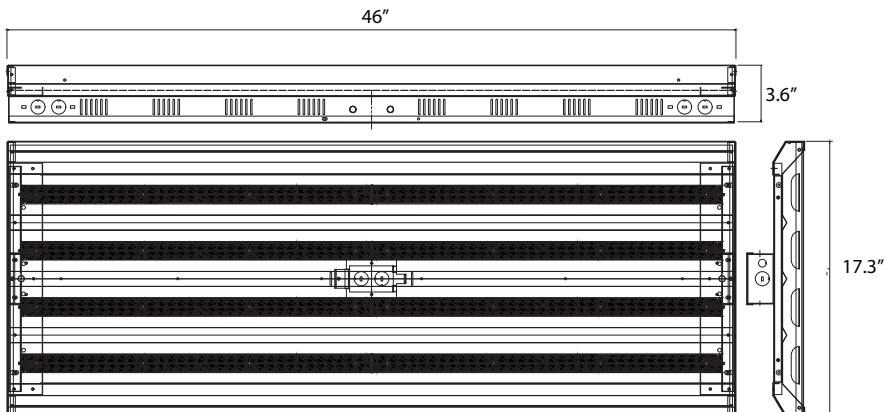
EHB2-105 and EHB2-155  
10.12 Lbs.



EHB4-(210/170/155) and EHB4-210 and EHB4-300  
17.82 Lbs.



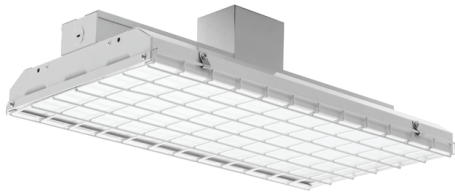
EHB4-400  
19.58 Lbs.



# OPTION

## ACCESSORY

### Wire Guard

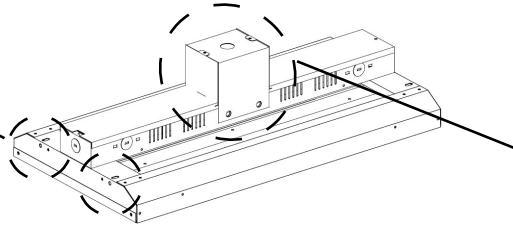


Part # for ordering separately:

EHB-WG-2L3M (Wireguard kit for EHB2-105 and 155)  
 EHB-WG-4L3M (Wireguard kit for EHB4-210 and 300)  
 EHB-WG-4L6M (Wireguard kit for EHB4-400)

### Mounting

V-Clips, air-craft cable, and chain.



Pendant Hanger



## -OS control pre-commissioning

### Sample Number: -OS (L2-5M-L3-S10M)

L2	(Blank)	5M	L3	S10M	(Blank)	(Blank)	(Blank)
<b>Lens / Coverage</b>	<b>High Mode</b>	<b>Hold Time</b>	<b>Low Mode</b>	<b>Stand-by Period</b>	<b>Ramp Up</b>	<b>Fade Down</b>	<b>Photocell On/Off</b>
L2 - 8'H (48' dia.)	(Blank) - 100%	#M - 1-30 min.	L5 - 50%	SN - ∞	(Blank) - Disable	(Blank) - Disable	(Blank) - Disable
L3 - 20'H (40' dia.)	H9 - 90%	30S - 30 sec.	L3 - 30%	S#H - 1-5 hrs.	#Up - 1-60 sec.	#Dn - 1-60 sec.	(Blank) - Disable
L4 - 40'H (60' dia.)	H8 - 80%		L2 - 20%	S#M - 1-59 min.			PS - Active
L7 - 40'H (100' dia.)	H7 - 70%		L1 - 10%	(Blank) - Disable			

**High Mode:** The selected high light level when motion detected.  
**Hold Time:** Time period the luminaire remains at "High Mode" after no motion detected.  
**Low Mode:** The selected low light level after the hold time.  
**Stand-by Period:** Time period the luminaire remains at "Low Mode" before it completely switched off in the long absence of people.  
 When set to "∞" mode, the low light level is maintained until motion is detected.  
**Ramp Up:** Time period for light level to increase from LOW to HIGH.  
**Fade Down:** Time period for light level to decrease from HIGH to LOW.  
**Photocell On/Off:** When the light level exceeds this setting, the lights will turn off even when the space is occupied. Once the light level exceeds this setting, the sensor will wait and monitor for a short period of time in order to confirm the light level increase is not temporary before forcing the lights to go off. When light level goes below the settings, the light will turn on even without motion detection. This feature is disabled by default. If using this setting in combination with the Hold Off set-point, there must be at least 10fc of dead band between the two settings. The Photocell set-point is automatically set to maintain at least 10fc of dead band above the Hold time set-point to help avoid load cycling.