



PROJECT NAME

CATALOG NO.

TYPE

DATE

NOTE

SLIM LINEAR LED HIGH BAY

EHB Series

Slim Linear LED High Bay

DESCRIPTION

The Alphalite EHB Series Slim Linear LED High Bay delivers high lumen output, long life, economic solution, and no restrike time. This energy-efficient LED luminaire offers one-to-one replacement of existing HID or fluorescent high bays. Precision-formed reflectors delivers adequate light in high mounting applications. Modular driver and LED arrays. Economic solution to optimize payback. Capable of being operated with occupancy sensor



APPLICATION

Various commercial industrial applications with high ceilings: warehouse, manufacturing facilities, retail, gymnasiums, grocery.



SPECIFICATION FEATURES

Construction

Rigid, low-profile steel housing. Precision-engineered and manufactured optics to optimize light delivery to the working plane. Convenient mounting options and sufficient knockouts for controls integration and multiple connection options. Housing features radiator slots for heat dissipation and low temperature LED operation. LED module and driver are replaceable. Housing and optics maintain damp location rating with all internal components.

Mounting

Comes standard equipped with V-hooks for mounting. Various mounting options available: surface, suspension, air craft cable, and chain.

Finish

Highly reflective finish. Baked white paint, applied after fabrication.

Electrical

Luminaire utilizes long life, high efficacy LEDs and a highly efficient, reliable LED driver. 120V-277V input voltage for increased versatility. 0-10V continuous dimming comes standard. Ideal when used in conjunction with controls and sensors. Comes equipped with quick disconnect for compliance with US code.

Optics

Die formed, 95% reflectivity optical reflectors optimizes performance and light delivery. Comes standard with high transmission frosted lens.

Certifications / Regulatory

All components used have UL approval. UL Class 2. Power supply: SCP, OTP, OVP protection, FCC Part 15 Class B, UL8750 Class 2.

Warranty

7-year limited warranty. See complete warranty terms for details.

Quick Ship Product

- EHB2-155/840
- EHB2-155/850
- EHB4-210/840
- EHB4-210/850
- EHB4-400/850

ORDERING INFORMATION

Sample Number: EHB2-155/850

EHB	4	L	8	40	(Blank)	(Blank)
Series	Form Factor	Lumen Package	CRI	CCT	Input Voltage	Dimming
EHB = LED Slim Linear High Bay	2 = 2' 4 = 4'	2' length: 105 = 105W 155 = 155W 4' length: 210 = 210W 400 = 400W	8 - 83+ CRI	40 - 4000K 50 - 5000K	(Blank) - 120V-277V 480 - 480V	(Blank) - 0-10V Continuous Dimming 12V - 12V Aux

Options

Accessories

WG = Wire Guard (see pg. 2 for details)
PMK = Single-point pendant mount kit
SMK = Surface mount kit
ACC = Aircraft cable suspension kit
CHS = S-chain set (4 1/4")
CRD-x = SJTOW black cord, 18/3, x=length
TLP = Nema locking plug

Controls

PIR = PIR Occupancy On/Off Sensor
OS = Integrated step dimming PIR occupancy sensor
DL = Integrated daylight harvesting
SMC = Smart Control System

Emergency Backup

EM700 - 700lm
EM1400 - 1400lm
EM2000 - 2000lm

SUMMARY

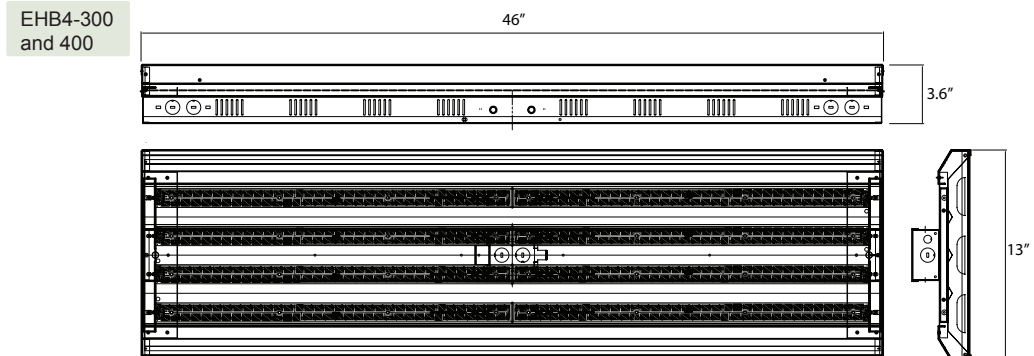
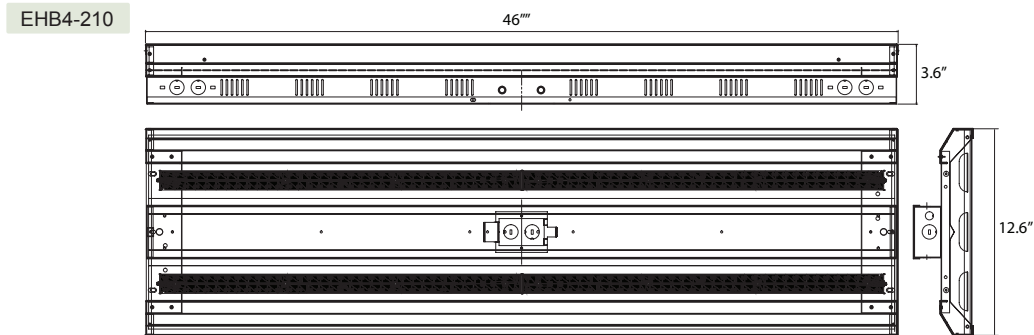
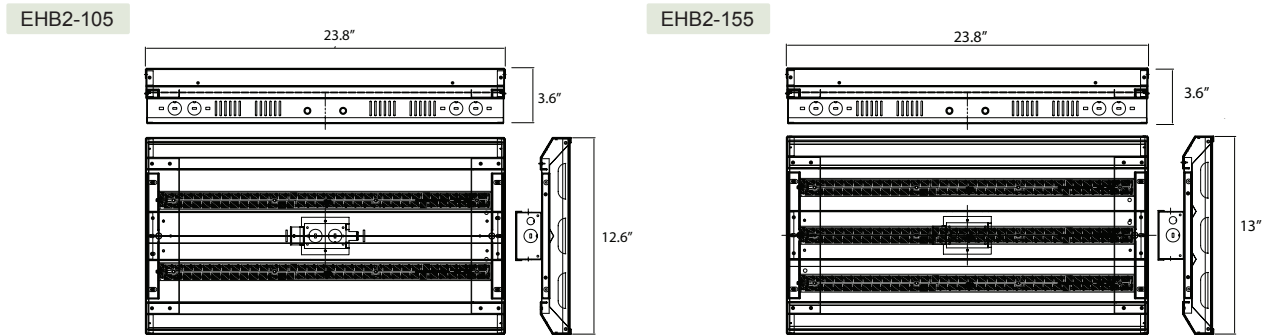
Input Voltage	120V-277V
Input Frequency	50/60 Hz
Power Factor	> 0.95
THD (Max.)	20%
Efficacy	> 135 LPW
Controls/ Dimming	Full Range 0-10V dimming standard
Dimming Range	10-100%
CRI	83+, R9 > 0
CCT	4000K and 5000K
Operating Temp.	-20- +55C
Rated Life	70,000 hours

ENERGY PERFORMANCE DATA

Form Factor	Part No.	Rated Wattage (W)	Tested Wattage (W)	Delivered Lumens (lm)	Efficacy (lm/W)
2' Frosted Lens	EHB2-105/840	105	105	14175 +/- 10%	135
	EHB2-105/850				
	EHB2-155/840	155	155	20925 +/- 10%	135
	EHB2-155/850				
4' Frosted Lens	EHB4-210/840	210	210	28350 +/- 10%	135
	EHB4-210/850				
	EHB4-300/840	300	300	40500 +/- 10%	135
	EHB4-300/850				
	EHB4-400/840	400	400	54000 +/- 10%	135
	EHB4-400/850				

PHYSICAL PARAMETERS

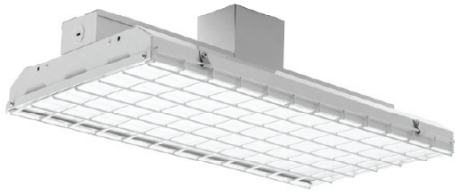
DIMENSION



OPTION

ACCESSORY

Wire Guard

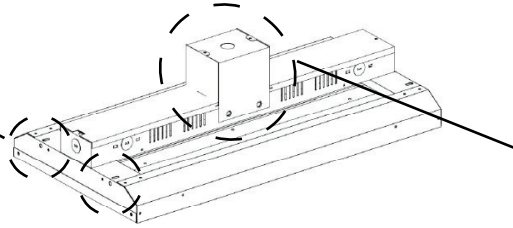


Part # for ordering separately:

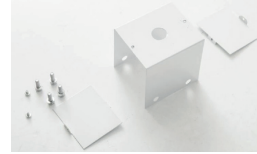
EHB-WG-2L4M	(Wire guard for EHB2-105)
EHB-WG-2L6M	(Wire guard for EHB2-155)
EHB-WG-4L4M	(Wire guard for EHB4-210)
EHB-WG-4L6M	(Wire guard for EHB4-300 and 400)

Mounting

V-Clips, air-craft cable,
and chain.



Pendant Hanger



WIRELESS SMART CONTROL SYSTEM (ASMC)

The Alphilite Wireless Smart Control System is an ideal choice to provide convenient control of lighting. The LED controller uses wireless technology to communicate with other self-powered products in the system and provides an amazingly simple solution for dimming control of LED lighting.

APPLICATION

Versatile solution for general purpose applications. Ideal for multi level building, offices, school, warehouse, manufacturing facilities, and spaces that demand energy demand reduction and high quality light.

BENEFITS

- Reliable, longer indoor range wireless communication
- Easy Design-in
- License-free
- Self-powered
- Lower energy costs
- Lower installation costs
- Strength of interoperability
- Convenient access to replaceable, standard components reduces life cycle costs

