

# BRK-LED46-DK-ECO 4"/5"/6" SURFACE LED DISK LIGHT

<b>Project:</b>	
<b>Type:</b>	
<b>Catalog #:</b>	

## STANDARD



## APPLICATIONS

6" surface disk light solution with integrated LED power supply and thermal management system combined in a single compact unit. Designed to fit most standard 4", 5" and 6" recessed cans, also work in 4" junction box.

## ILLUMINATION

- Long life LEDs with up to 50,000 hours at 70% lumen maintenance.
- Choice of 2700K (±145), 3000K (±175), 3500K (±245), 4000K (±275), 5000K (±283), color temperature with 80 CRI.
- Produces 900 lumens output from luminaire.
- Uses 1.18W high power, high quality LEDs.

## ELECTRICAL

- Dimmable to 10% with most dimmers.

Lutron Maestro C-L	MACL-153MR
Lutron Skylark C-L	SCL-153P
Leviton Sureslide	Cat. No. 6674
Lutron	PD-6WCL
Legrand Harmony	HCL453PTCCCV6
Lutron Diva	DV600P
Lutron Diva	DVCL-153P

- Save 75% compared to incandescent sources.
- High efficiency driver with a power factor  $\geq .90$  with input power of 120V, 50-60Hz.
- Built-in LED Driver.
- Power consumption of 12 watts.
- Operation temperature of - 20°C - 40°C (-4°F - 104°F).

## MOUNTING

- Easy installation with 4" to 6" recessed cans.
- Cut-off and strip, for 4" junction box mounting, using mounting bracket. (Surface Mount)
- List Of Compatible Junction Boxes.

New construction 6010ADW-25Square Ceiling Electrical Box
Re-model rectangle Ceiling Electrical Box
4"Square Ceiling Electrical Box
4"Octagonal Ceiling Electrical Box
3.5"Octagonal Ceiling Electrical Box
3-1/2" Round Ceiling Electrical Box
4"Round Ceiling Electrical Box

## ORDERING INFORMATION

MODEL		WATTS		KELVIN RATING		LUMENS	ENERGY STAR
BRK-LED46-DK-12W-27K-ECO	12	Disk Light	27K	2700K	900	900	YES
BRK-LED46-DK-12W-3K-ECO	12	Disk Light	3K	3000K	900	900	YES
BRK-LED46-DK-12W-35K-ECO	12	Disk Light	35K	3500K	900	900	YES
BRK-LED46-DK-12W-4K-ECO	12	Disk Light	4K	4000K	900	900	YES
BRK-LED46-DK-12W-5K-ECO	12	Disk Light	5K	5000K	900	900	YES



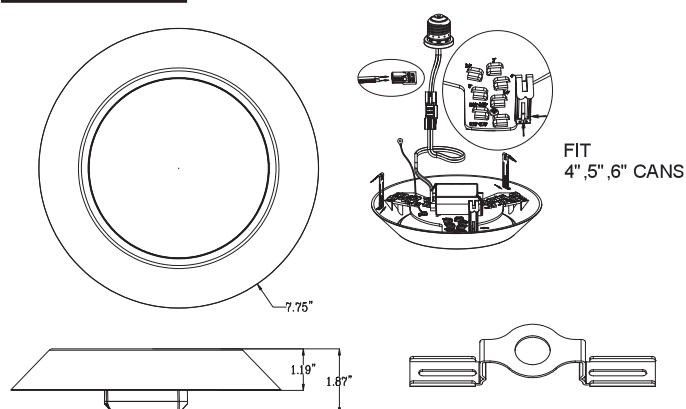
## HOUSING

- Surface mount disk used with 4", 5" and 6" housings.
- Compatible with insulated, non-insulated, and air-tight ceilings.
- Durable thermoplastic construction.
- E26 medium screw-base Edison connector provides easy retrofit of incandescent housings.

## WARRANTY/LISTING

- Tested in accordance with IESNA LM79 & LM80.
- ETL Listed for wet location US and Canada.
- Energy Star certified.
- Passes FCC Class B.
- Five year warranty on all electronics and housing.
- ROHS Compliant.

## DIMENSIONS



FIT  
4", 5", 6" CANS