

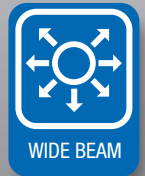
STRIP 22.5W 4FT. TITANIUM LED SERIES



PRO



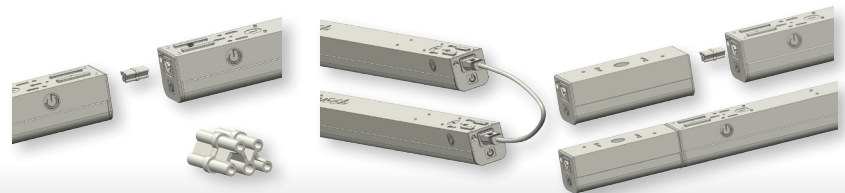
- Ⓞ **QWIKLINK** technology for seamless fixture connection
- Ⓞ Surface mount, pendant or suspended installation
- Ⓞ LED quick connectors for fast and easy wiring
- Ⓞ 120-277V circuit and 0-10V dimming control compatible
- Ⓞ Exceptional efficacy 115 LPW
- Ⓞ Extra long 100,000 hour lifetime



STRIP PRODUCT FEATURES

QWIKLINK Connection System

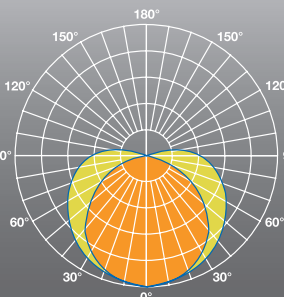
Easily and seamlessly connect up to 64' of fixtures with the QWIKLINK connection system. The QWIKLINK connector provides line voltage and 0-10V dimming between fixtures. The QWIKLINK cable comes in two lengths (7.9in. & 5ft.) and allows for angled and distant fixture connection. The QWIKLINK sensor integrates with a single fixture or an entire row for occupancy sensing and dimming.



QWIKLINK Connector QWIKLINK Cable QWIKLINK Sensor

Even Distribution & Uplighting

The STRIP QWIKLINK Series provides even distribution and up to 10% uplighting to limit the "cave effect" associated with other fixtures with more direct lighting. The smooth light output helps create a visually comfortable and secure environment.



STRIP 22.5W 4FT. TITANIUM LED SERIES



SPECIFICATIONS

Product Model	28317 22.5STRIPDIM/830/277V	28318 22.5STRIPDIM/835/277V	28319 22.5STRIPDIM/840/277V	28320 22.5STRIPDIM/850/277V
Type	STRIP 4'	STRIP 4'	STRIP 4'	STRIP 4'
Power (W)	22.5	22.5	22.5	22.5
Voltage - Frequency	120-277V 50-60Hz	120-277V 50-60Hz	120-277V 50-60Hz	120-277V 50-60Hz
Color Temp. (ANSI)	3000K	3500K	4000K	5000K
CRI (Ra)	82	82	82	82
Typical lumens (lm)	2500	2500	2600	2600
Efficacy (LPW)	111	111	115	115
Beam Angle	120°	120°	120°	120°
Dimmable	Yes	Yes	Yes	Yes
Power Factor	0.9	0.9	0.9	0.9
THD	<20%	<20%	<20%	<20%
Ambient Temp. Rating	-4°F / -20°C - 113°F / 45°C	-4°F / -20°C - 113°F / 45°C	-4°F / -20°C - 113°F / 45°C	-4°F / -20°C - 113°F / 45°C
Rated Lifetime - L70 (hrs.)	100,000	100,000	100,000	100,000
Dimensions (LxWxH)	48.03"x2.56"x2.64" (1220x65x67mm)	48.03"x2.56"x2.64" (1220x65x67mm)	48.03"x2.56"x2.64" (1220x65x67mm)	48.03"x2.56"x2.64" (1220x65x67mm)
Weight (lb. / g)	4.03lb. / 1.83kg	4.03lb. / 1.83kg	4.03lb. / 1.83kg	4.03lb. / 1.83kg

PRODUCT ORDERING INFORMATION

Must Select				Options (Factory Installation): Select or Leave Blank	
Power	CRI	CCT	Voltage	Step Dimming	EM Backup
22.5STRIP 22.5W	8 82	30 3000K	277V 120-277V	(Blank) None	(Blank) None
		35 3500K		STEPDIM Step Dimming 100/50	EM 10W EM Backup
		40 4000K			
		50 5000K			

Ex. 22.5STRIP/840/277V/STEPDIM/EM

* Suitable for damp locations. Not for use where directly exposed to weather or water

** DLC Listed for Direct Linear Ambient, and Stairwell and Passageway Luminaires when used with STPSENSOR

ACCESSORY ORDERING INFORMATION

Model	Product	Description	Model	Product	Description
STPSENSOR	28388	Microwave Sensor QWIKLINK Connection Module 120-277V - Tri-level - Field Adjustable	STP10CABLE	28383	10' Aircraft Cable with Y-toggle (Set of 2 Cables Suitable for 1 Fixture)
SENSORRC	97881	Remote Control for STPSENSOR	STPPLATE4C	28387	Back Plate for Mechanical Connection Between Suspended Fixtures in a Continuous Run (2 Aircraft Cables Per Fixture)
JBOXPLATE	28384	J-box Cover Plate	STPPLATE2C	97885	Back Plate for Mechanical Connection Between Suspended Fixtures in a Continuous Run (1 Aircraft Cable Per Fixture)
WIRECON20	28385	7.9" (20cm) QWIKLINK Cable	PC6	97860	6' Power Cord 18/3 (Not Pre-wired to Fixture)
WIRECON150	28386	5' QWIKLINK Cable	PC12	97861	12' Power Cord 18/3 (Not Pre-wired to Fixture)
STP6CABLE	28382	6' Aircraft Cable with Y-toggle (Set of 2 Cables Suitable for 1 Fixture)			