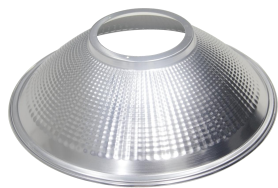


LED HighBay Light

DLC Model Numbers

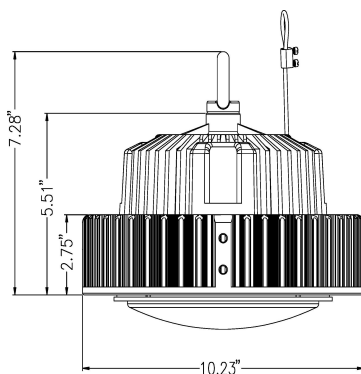
3HBA150L40[B,W,BK]2[P,Blank];	3HBA150L45[B,W,BK]2[P,Blank];
3HBA150L50[B,W,BK]2[P,Blank];	3HBA150L40[B,W,BK]2D;
3HBA150L45[B,W,BK]2D;	3HBA150L50[B,W,BK]2D;
3HBA150L40[B,W,BK]2PD;	3HBA150L45[B,W,BK]2PD;
3HBA150L50[B,W,BK]2PD;	3HBA150L40[B,W,BK]2DM;
3HBA150L45[B,W,BK]2DM;	3HBA150L50[B,W,BK]2DM;
3HBA150L40[B,W,BK]2PDM;	3HBA150L45[B,W,BK]2PDM;
3HBA150L50[B,W,BK]2PDM	



120 degree



PC cover



DESCRIPTION

LED high bay lights are distinctive, low-profile design, high-quality construction, ultra-high Lumen high bay LED Lights delivering a luminous efficacy of more than 140 lm/W - more than 80%-85% energy savings compared to traditional HID high bay lighting.

Highest-grade LED components and driver circuitry are protected from dust and moisture by waterproof connections and silicone seals for an IP-65 rating. While the heavy-duty, die-cast aluminum housing gives the fixture its unique look, it also serves as a massive, high-efficiency heat sink-dissipating heat and further protecting the system for a lifetime of reliable, maintenance-free service.

Widely used in commercial Applications: warehouses, manufacturing plants, supermarkets, malls, retail stores, exhibition centers, arenas, stadiums, etc.

COMPLIANCE

- ETL/cETL (4010246) listed
- LM79 / LM80 / IES available
- CE RoHS available

FEATURES

- Top brand high quality SEOUL chips, super high light efficacy, Mean Well driver ensure the durability of the product.
- Innovative high-tech design combines form with function.
- High-efficiency, cold forging heat-dissipation design for long operating life.
- 120° beam angle standard; PC lens accessories.
- Frosted lens accessory for diffused lighting effect.
- Heavy-duty anti-corrosion loop for hook hanging.
- Integrated thermal management system.
- Easy-to-install: Wall/Ceiling mounting options.
- Dimming driver, PIR sensor and motion sensor option available.
- Energy saving 80%~85%.
- 6-Year Warranty.

SENSOR

• PIR Sensor: wide detection range of 150 or 270 degrees, max detection distance 18 meters, adjustable time setting options of 1min, 5min, and 20min. Operating temperature -10°C~+40°C.

• Motion/Daylight Sensor: 0-10V microwave-based motion sensor with integral photocontrol, allowing for three output states: 100%; 10/20/30/50% output; or 0% output. Detection area, hold time, daylight threshold, and dimming level all have DIP switches. Operating temperature of -35°C~+70°C.



LED High Bay Light

SPECIFICATIONS

Items	Details
Model No.	3HBA150L50[B,W,BK]2DM
Input Power	150W
Input Voltage	AC 100-277V, 50~60Hz
Luminous Flux	19707 lm @5000K
Efficiency	140 lm/W
LED Source	SEOUL
Color Temp.:	4000K /4500K / 5000K
CRI	≥73
Driver	Mean Well driver
Power Factor	>0.90
Housing Color	White/Black/Brown optional
IP rate	IP65
THD	<15 %
Fixture Surface	Die-cast aluminium + PC lens
Cover	120° Aluminum reflector, PC reflector optional
Operating Temp	- 30°C to 60°C
Replacement	300W~350W MH/HPS
Energy saving	60% ~ 80%
Sensors	120V PIR sensor /100-277V motion sensor Optional
Dimming	0-10V dimming
Dimension	10.23" Φ × 7.28" L (UFO version)
Testing Reports	LM79, LM80, IES available
Warranty	6 years warranty
Qualifications	ETL/cETL, DLC Premium

Ordering Guide

Series	Watt	Input Voltage	Color temperature	Color for housing	Driver	Option 1	Option 2	Option 3	Option 4
3HBA=High bay	150=150 W	L=100-277V H=347-480V	40=4000K 45=4500K 50=5000K	B=Bronze W=White BK=Black	1=UL Driver 2=Meanwell driver	P=Photocell Sensor Blank=Non- Sensor	D=Dimmable Blank=Non-Dimmable	M=Motion Sensor Blank=Non-Sensor	60=60 Degree 90=90 Degree 120=120 Degree PC=PC Reflector Blank=Non-Reflector (UFO version)

For example, 3HBA150L50B2 refer to 150W Highbay,100-277v, 5000K, Bronze color, Mean Well driver

3HB150L50B2DM120 refer to 150W Highbay,100-277v, 5000K, Bronze color, Mean Well driver, Dimmable, Motion sensor, 120 degree reflector

LED High Bay Light

INSTALLATION

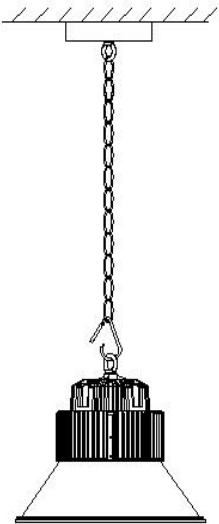
IMPORTANT SAFEGUARDS

When using electrical equipment, basic safety precautions should always be followed including the following:

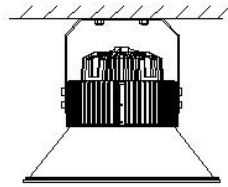
PRIOR TO INSTALLATION

1. Turn off power supply to avoid the risk of electrical shock.
2. Proper grounding is required to ensure personal safety.
3. Make certain power is OFF before starting installation or maintenance.
4. Do not recess the fixture.
5. A qualified electrician should do all work.
6. DO NOT TOUCH THE LED CHIPS. DAMAGE MAY OCCUR.

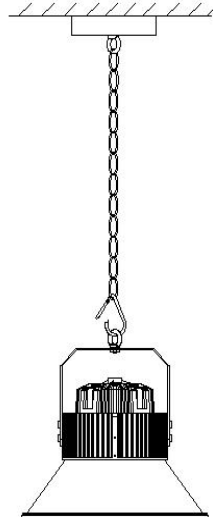
MOUNTING OPTIONS



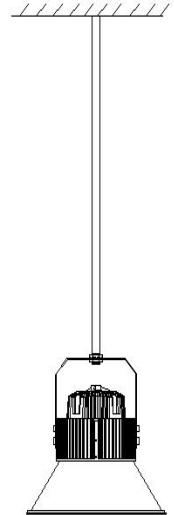
1. Sling and hook



2. Bracket mounting



3. Bracket plus sling mounting



4. Conduit mounting